



Active and Abandoned Mine Operations

Solebury Township Annual NHCS Update Meeting 2017

Pottsville District Mining Office

Michael Menghini – District Mining Manager
Virginia Cain – Office of Field Operations
Gary Latsha – Compliance Manager
Glenn Florence – Bureau of Mining Programs
Michael Kutney, P.G. – Permitting

October 2017

Overview

- Pending Permits & Permit Actions
- PCWA & PennFuture Settlement
- Stream Restoration
- Complaints
- Sinkholes
- Monitoring Wells & Groundwater
- Quarry Pumping
- Compliance Actions
- EHB Activities
- PADEP Plans
- Numbers
- Reclamation Photos
- Questions

Pending Permits

- Received NPDES renewal application in late June 2012 – no decision made
- Subsequent renewal application received in August 2017

Permit Actions

- Re-issued GP-104 stormwater management permit for stream work
- Approved a minor revision to groundwater monitoring program
 - Removed Well Nest 1, Bucciarelli, Holbrow, Diodati and Gerold; reduced frequency of MW-3 and MW-6 to monthly, and added SS-1.
 - Solebury Township and Solebury School were provided the application contents for review

▶ PCWA & PennFuture Settlement



- LEGEND**
- INSTREAM AND NEARBY SINKHOLES (PARAGRAPH 3.a)
 - PRIMROSE CREEK (DOWNSTREAM EDGE TO QUARRY HIGHWALL) (PARAGRAPH 3.b)
 - PRIMROSE CREEK (UPSTREAM EDGE TO PROPERTY LINE) (PARAGRAPH 3.c)
 - PROPERTY LINE

EXHIBIT A CONSENT ORDER AND AGREEMENT		NEW HOPE CRUSHED STONE AND LIME CO. 6970 Phillips Mill Road New Hope, PA	
DRAWN BY: <i>MSW</i>	CHECKED BY: <i>LJV</i>	PROJECT NO: 071012.099	
DATE: 5/21/2013		DRAWING SCALE: 1" = 200'	
ENVIRONMENTAL ENGINEERING and SCIENCE			
Earthres Group, Inc. P.O. Box 468 6912 Old Easton Road Pipestville, PA 18847 USA www.earthres.com 215-766-1211			

▶ PCWA & PennFuture Settlement

- NHCS Obligations
 - Perform stream restoration work
 - Different segments prioritized:
 - swallet area (instream sinkholes)
 - Downstream of swallet area to quarry
 - Upstream to School property
 - Additional discharge monitoring (TSS)
 - Weekly sampling or within 24 hours of a 1-year, 24-hr storm
 - Currently ongoing
 - PECO culvert clean out

▶ PCWA & PennFuture Settlement

- PADEP Obligations
 - Require additional discharge monitoring (TSS) in next NPDES permit
 - Weekly sampling or within 24 hours of a 1-year, 24-hr storm
 - Currently ongoing
 - Provide PCWA and PennFuture 30 days to comment on restoration work
 - Will provide response to comments not being addressed by PADEP actions

Stream Restoration

- Authorization granted for restoration for all reaches of Primrose Creek
- Work has begun and is proceeding
- Includes inlet structure
- Outlet structure designs are being discussed

Complaints

- 3rd Quarter 2017 noise complaint
 - Problem with crusher, fix, no NOV
- 3rd Quarter 2017 blasting complaint
 - Shot in compliance, problem caused by other source
- 3rd Quarter 2017 blasting complaint
 - Under investigation (filed last week)
- No well complaints reported to Pottsville Office

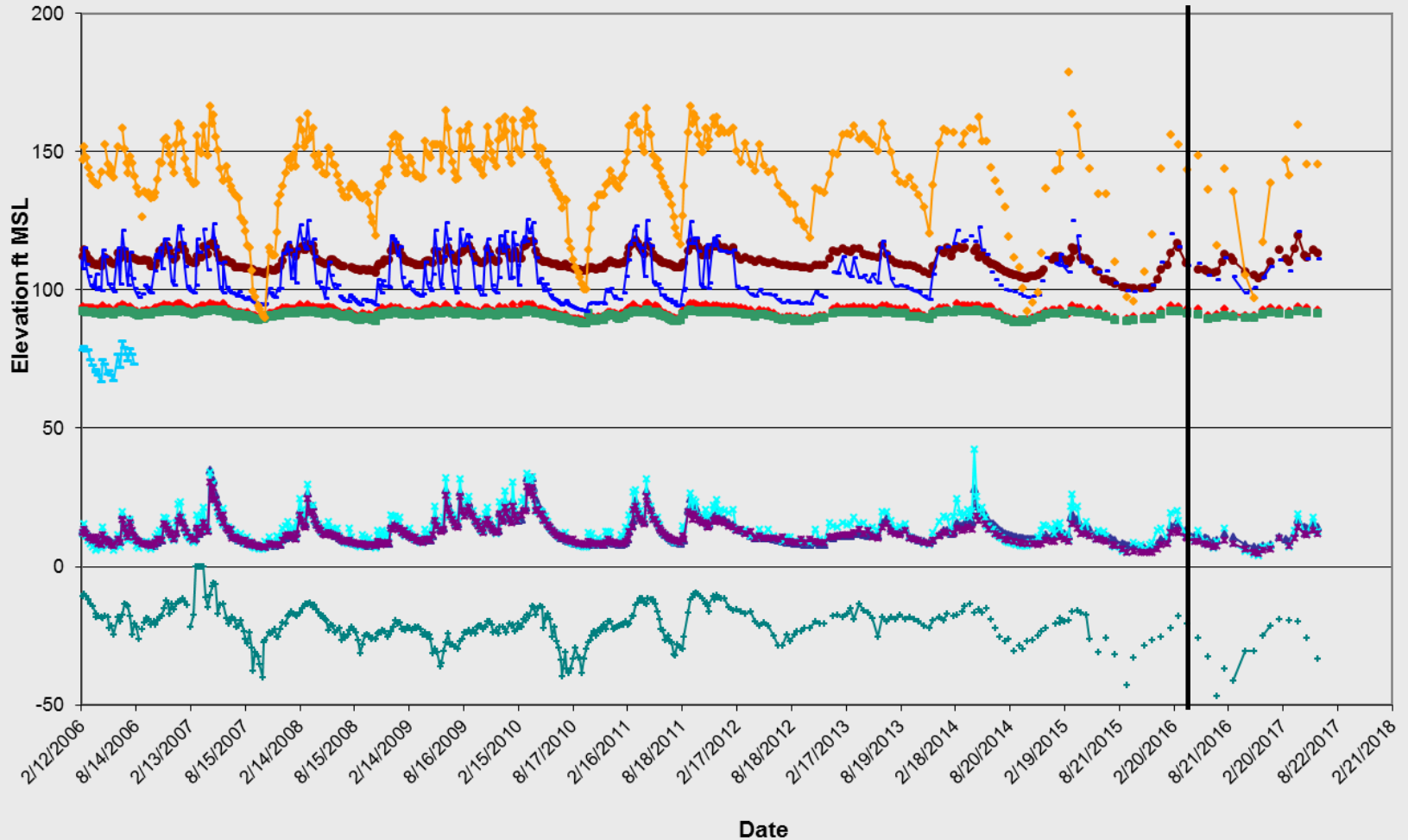
Sinkholes

- Sinkhole Summary
 - 3rd quarter 2016
 - Potential sinkhole north of quarry investigated, determined to be erosional feature, NHCS provided materials for repair
 - 1st quarter 2017
 - Sinkhole northwest of quarry. Repaired per permit
 - 3rd quarter 2017
 - Potential sinkholes west of quarry investigated, animal burrows
 - 3rd quarter 2017
 - Potential sinkhole north of quarry investigated, erosional feature, not in limestone

Monitoring Wells & Groundwater

Monitoring Well Groundwater Elevations at
New Hope Crushed Stone and Lime Co., Inc. SMP No. 7974SM3

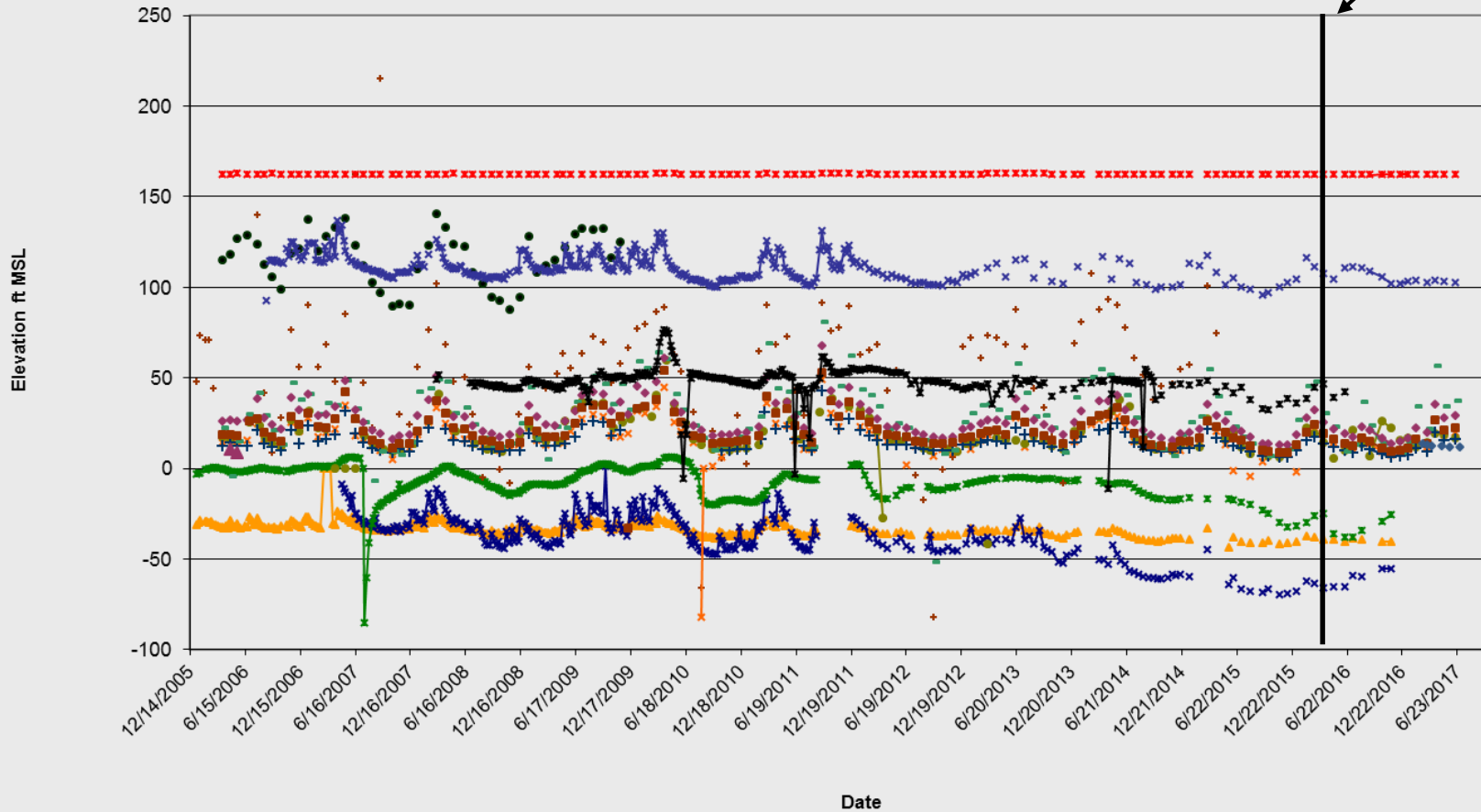
Initiation of
discharge limits



Monitoring Wells & Groundwater

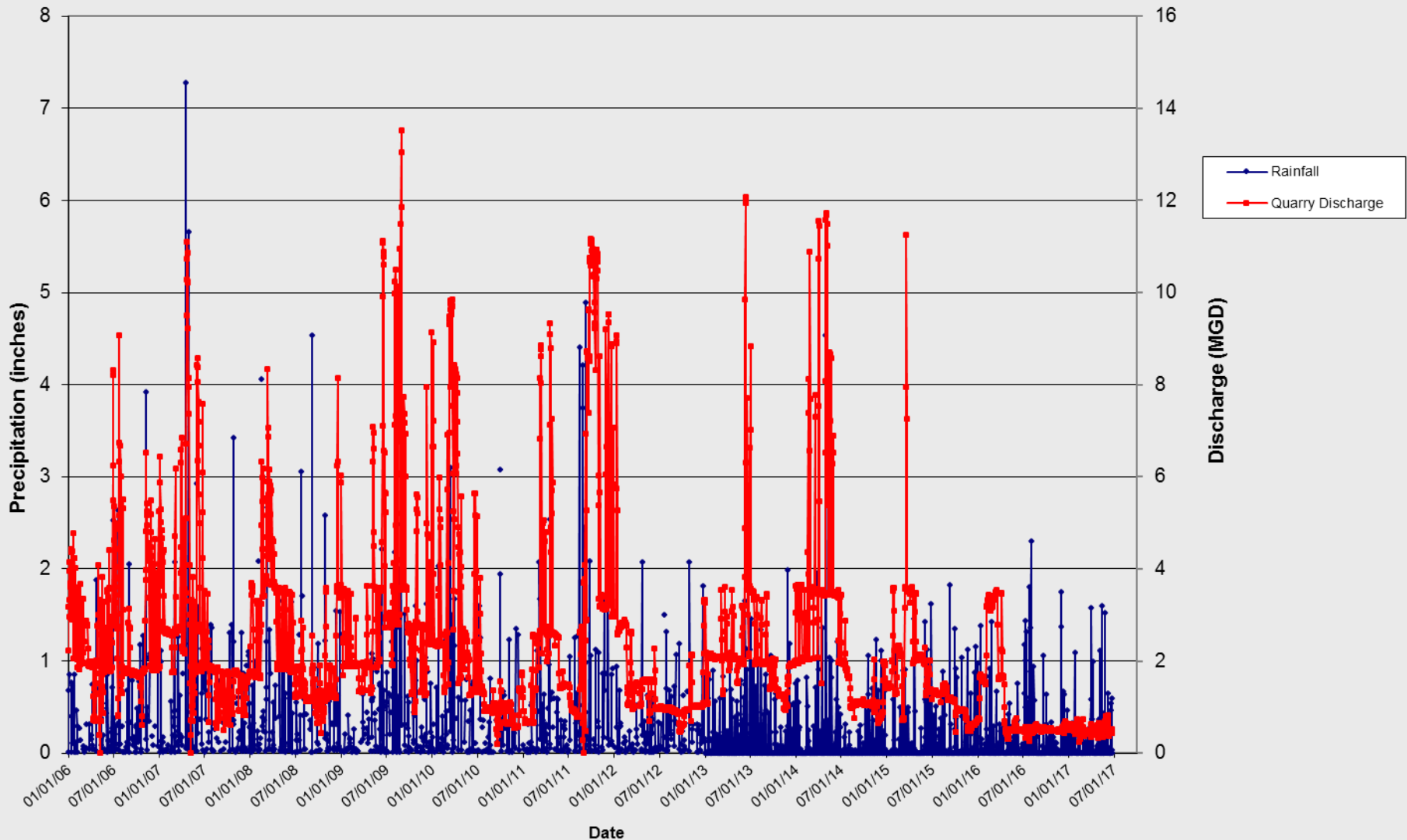
Residential Well Groundwater Elevations at
New Hope Crushed Stone and Lime Co., Inc. SMP No. 7974SM3

Initiation of discharge limits



Quarry Pumping

Precipitation and Quarry Discharge (MGD) at New Hope Crushed Stone & Lime Co. Inc.
SMP No. 7974SM3



Compliance Actions

- January 29, 2016 letter from PADEP ordering reclamation, limiting pumping, new reporting requirements, installing a well on Solebury School

Compliance Actions

- August 2016 compliance order
 - Failure to conduct the reclamation and abatement on schedule
 - CO was appealed to EHB
 - CO was lifted in August 2017 when reclamation was back on schedule
- July 2017 compliance order
 - Failure to meet reclamation yardage make up schedule by July 1, 2017
 - Lifted August 2017 when the reclamation yardage was caught up
- Inspection reports forwarded to Solebury Twp.

EHB Activities

- EHB hearing in May 2016 denied NHCS' petition for a supersedeas of January 29, 2016 letter (denied)
- Hearing held in March 2017 for appeal of January 29, 2016 letter
- Hearing was scheduled for September 2017 for appeal of August 2016 compliance order (withdrawn)
- Adjudication for the March 2017 hearing upheld the January 29, 2016 letter, NHCS has appealed

PADEP Plans

- Review NPDES renewal application
- Enforcing the January 2016 letter

Numbers

- 500,000 gallons per day
 - Minimum pumping volume, requested by Solebury Township
- 98' and 48' MSL
 - Currently permitted post-mining water level
 - Chapter 77.594 requires reclamation slopes to extend 50 feet lower
- \$1,144,029, \$410,541 and \$54,341
 - Amount posted bond under PILB
 - Amount currently paid in by NHCS
 - current PILB payment

Numbers

- Current water level is approximately -47 MSL as of September 26, 2017
- Total reclamation yardage 222,684 yds³ of approximately 621,000 yds³ needed
- Approximately 1,650 lineal feet of highwall reclaimed, approximately 3,500 lineal remain

Reclamation Photos



Reclamation Photos



Reclamation Photos



Reclamation Photos



2/18/2016 10:54

Reclamation Photos



Reclamation Photos



Reclamation Photos



Reclamation Photos



Questions?

