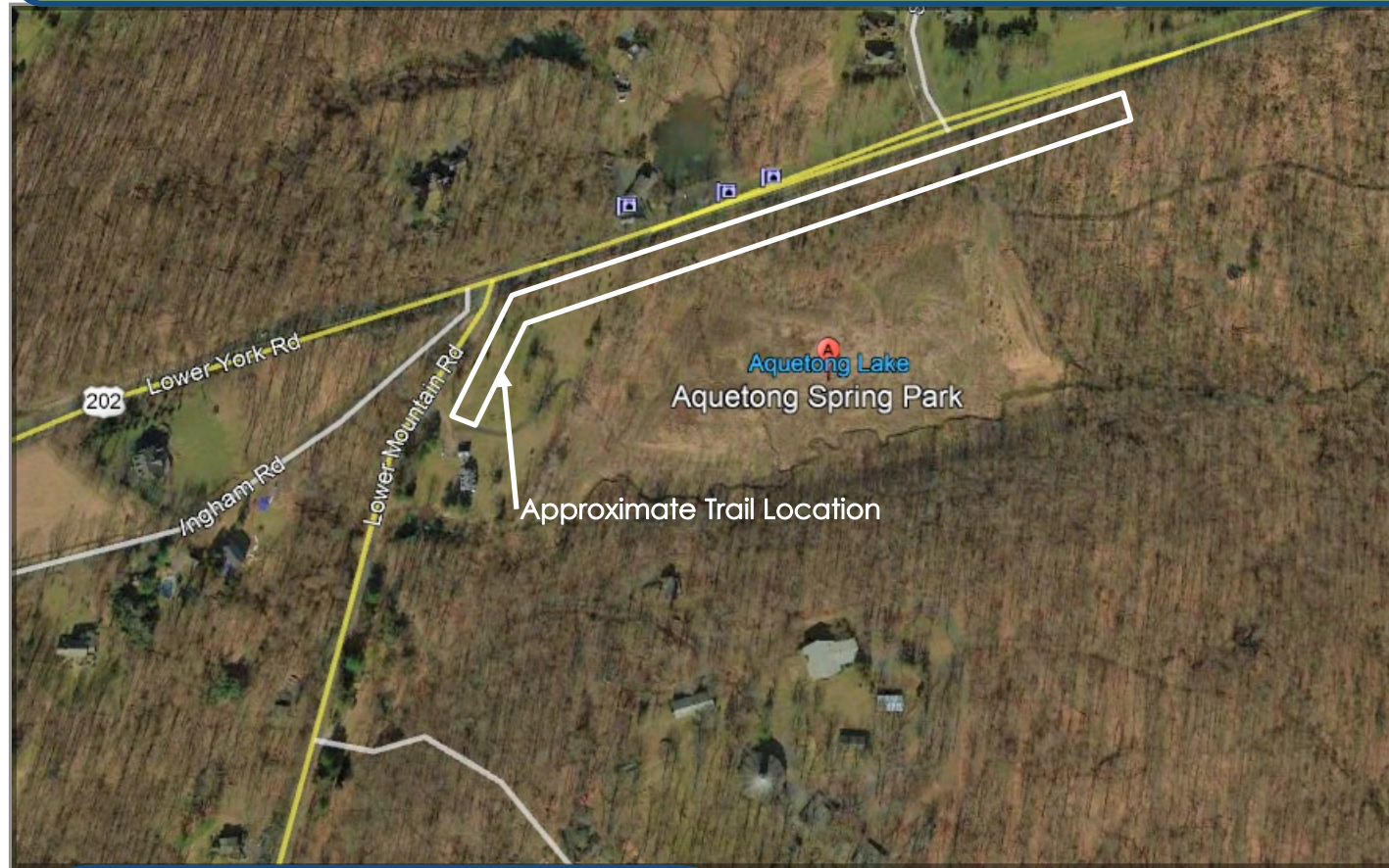


# S.R. 0000, SEC. APS

Aquetong Spring Park Path Project  
Solebury Township, Bucks County, PA



## Improvements

1900 LF	Shared Use Path (10' Wide)
0	Utility Impacts
0	Right of Way Acquisitions
Multiple	Post Construction Stormwater Management Facilities
1	Parking Lot



## Project Schedule

Project Phase	Planned Timeframe
Preliminary Engineering	August 2018 — June 2019
Final Design—Plans, Specs, Estimate	July 2019 — June 2020
Construction	October 2020 — August 2021

### Project Need

This section of path is part of the Route 202 Cross-County Trail that will ultimately extend from Montgomeryville to New Hope adjacent to SR 0202. Currently, there is no path in this area which means there is no safe connection available for path users. The path will also provide a continuous pedestrian and recreational facility along the entire length of Aquetong Park.

### Project Purpose

The purpose of the project is to provide a safe, convenient and continuous connection for pedestrians and bicyclists in Aquetong Park within Solebury Township between the Judy House driveway at the west and the existing gravel driveway to the east. This trail project adds a critical missing trail segment of the SR 0202 corridor between the existing D&L National Heritage Trail, and the existing Route 202 Parkway Trail.

## Engineering Funding

Solebury Township

## Construction Funding

Transportation Alternatives Set-Aside Funding of \$1,000,000



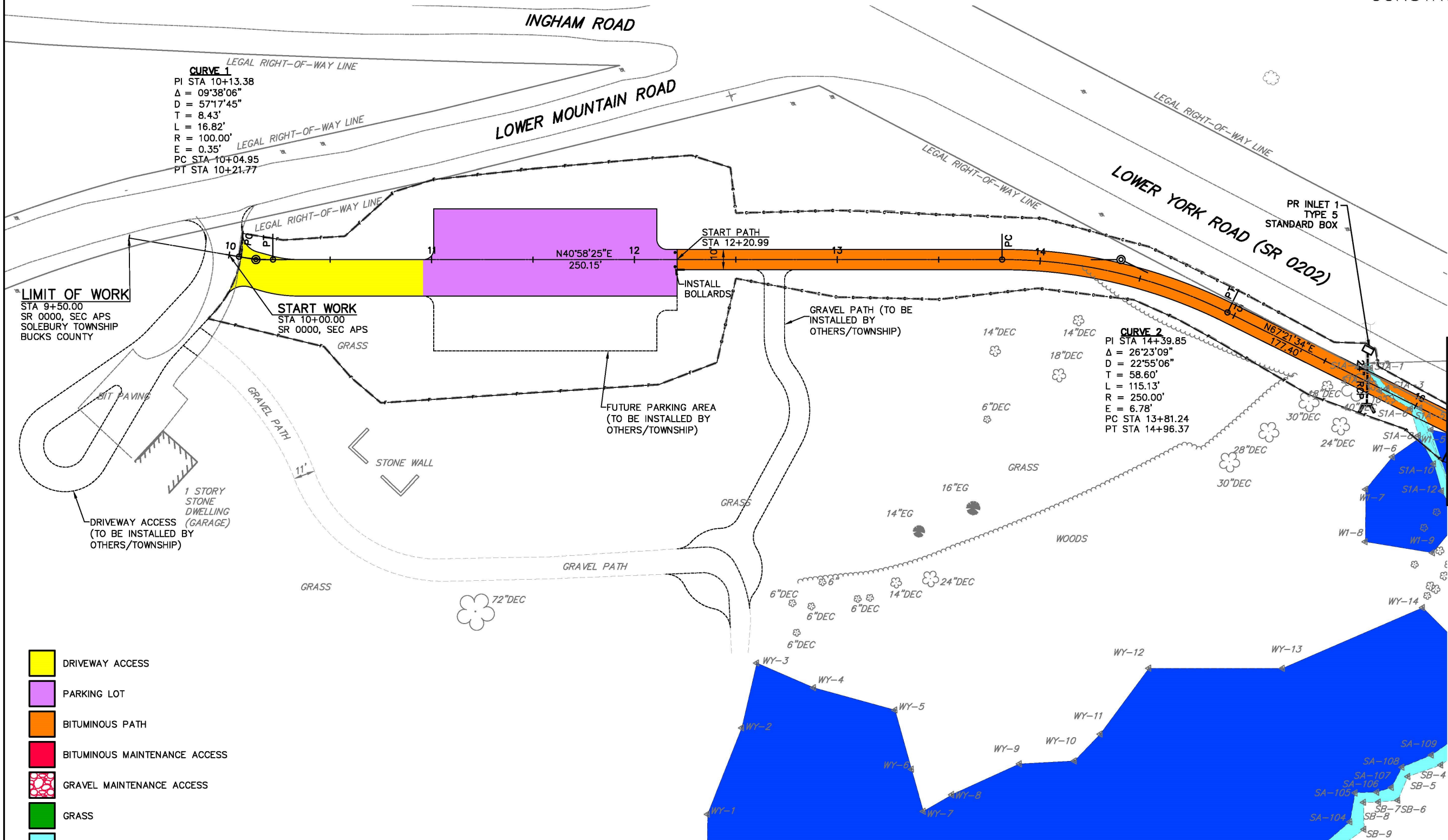
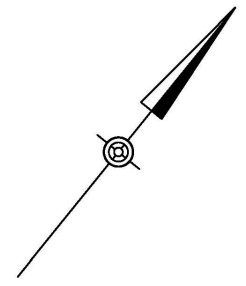
### Contact

Dennis Carney, Solebury Township Manager  
215-297-5656

Stephanie Butler, P.E., McMahon Associates, Inc.  
215-283-9444 • sbutler@mcmahonassociates.com

DISTRICT	COUNTY	ROUTE	SECTION	SHEET
6-0	BUCKS	0000	APS	6 OF 11
SOLEBURY TOWNSHIP				
REVISION NUMBER	REVISIONS	DATE	BY	

CONSTRUCTION PLAN



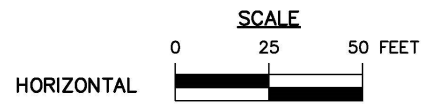
**LIMIT OF WORK**  
 STA 9+50.00  
 SR 0000, SEC APS  
 SOLEBURY TOWNSHIP  
 BUCKS COUNTY

**START WORK**  
 STA 10+00.00  
 SR 0000, SEC APS

CONTINUED ON SHEET #

- DRIVEWAY ACCESS
- PARKING LOT
- BITUMINOUS PATH
- BITUMINOUS MAINTENANCE ACCESS
- GRAVEL MAINTENANCE ACCESS
- GRASS
- STREAM
- DELINEATED WETLANDS

- - - - - APPROXIMATE LIMIT OF DISTURBANCE
- - - C - - - APPROXIMATE CUT LINE
- F - - - APPROXIMATE FILL LINE

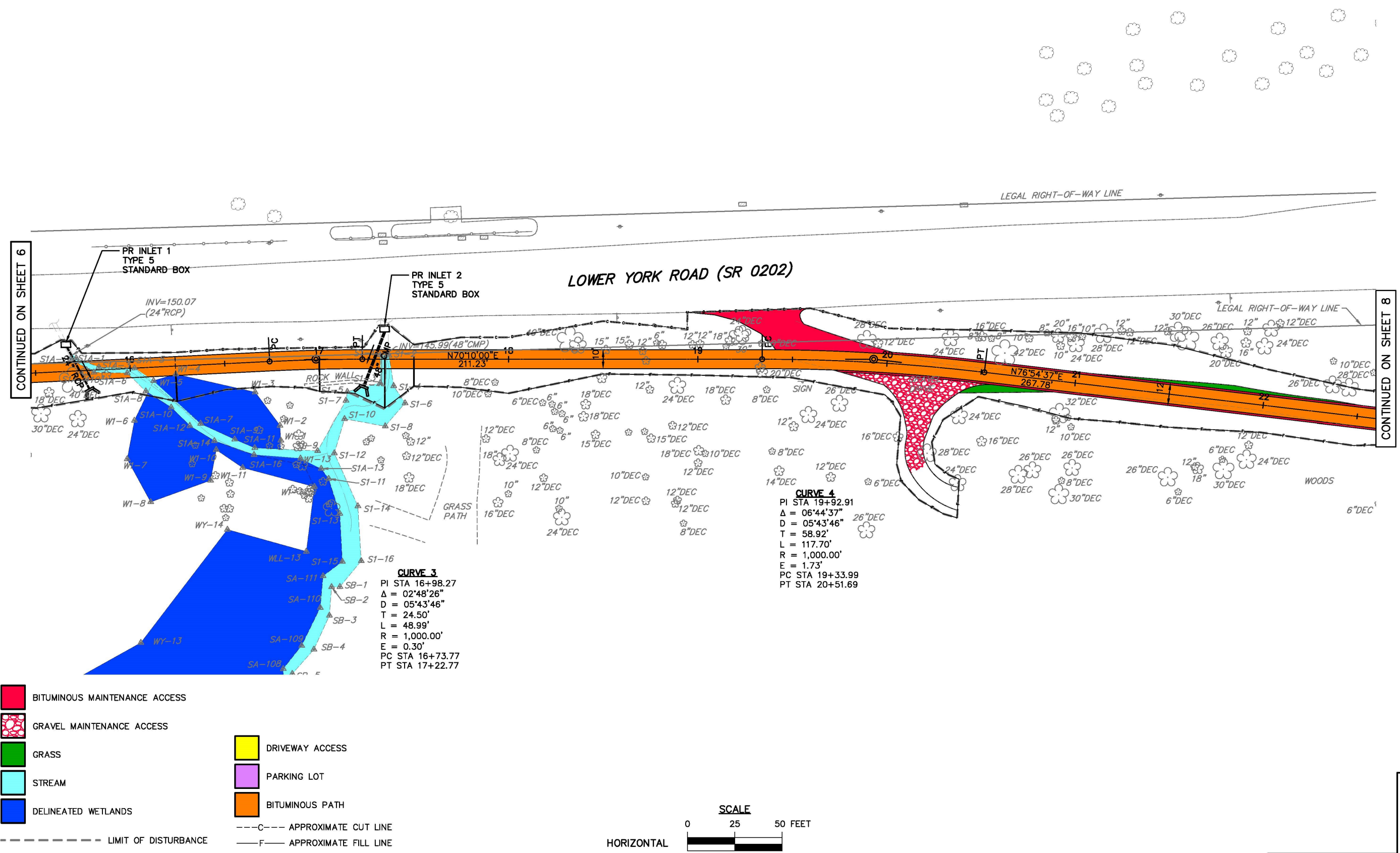


FOR PROFILE, SEE SHEET 9

SAFETY REVIEW 4/16/19

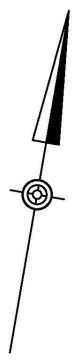
DISTRICT	COUNTY	ROUTE	SECTION	SHEET	
6-0	BUCKS	0000	APS	7 OF 11	
SOLEBURY TOWNSHIP					
REVISION NUMBER	REVISIONS			DATE	BY

# CONSTRUCTION PLAN

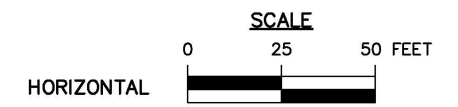


CONTINUED ON SHEET 6

CONTINUED ON SHEET 8



- BITUMINOUS MAINTENANCE ACCESS
- GRAVEL MAINTENANCE ACCESS
- GRASS
- STREAM
- DELINEATED WETLANDS
- DRIVEWAY ACCESS
- PARKING LOT
- BITUMINOUS PATH
- LIMIT OF DISTURBANCE
- APPROXIMATE CUT LINE
- APPROXIMATE FILL LINE

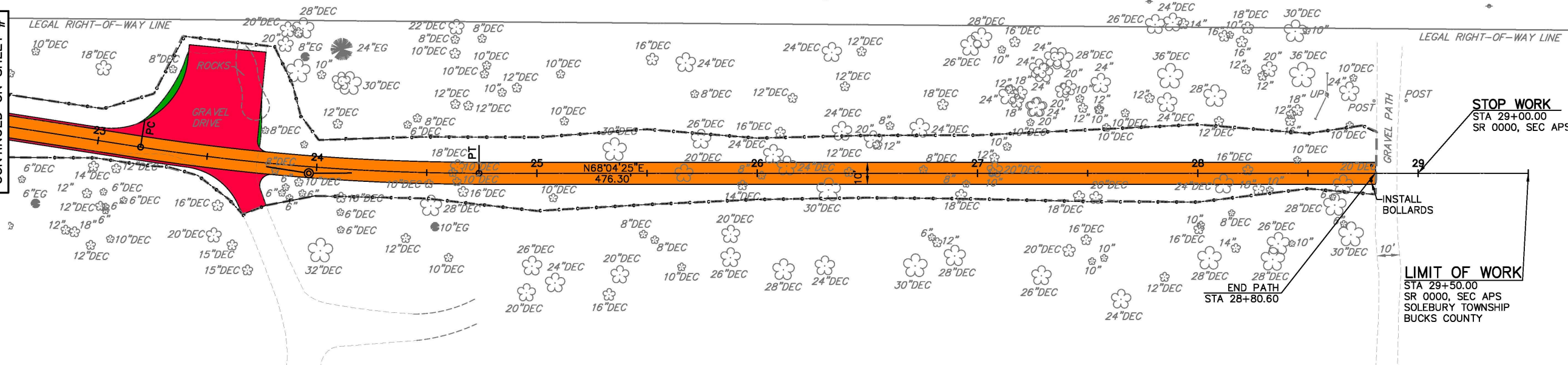
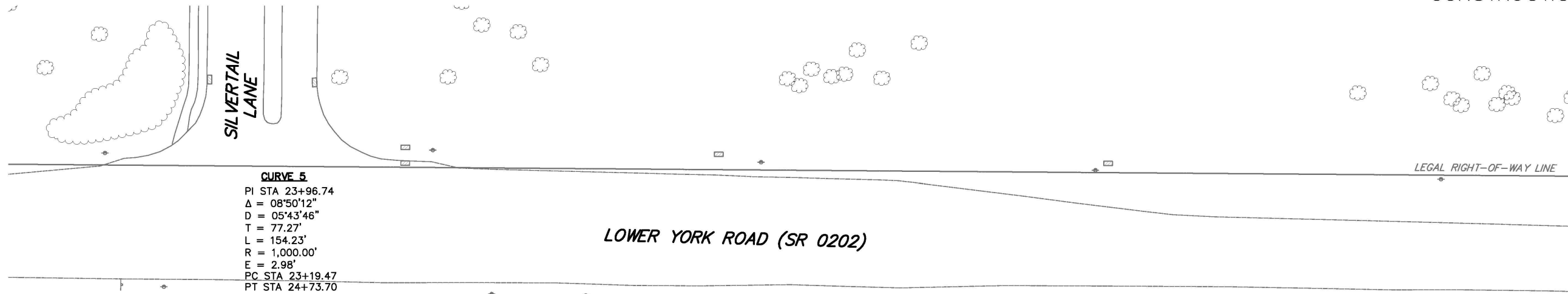


FOR PROFILE, SEE SHEET 10

SAFETY REVIEW 4/16/19

DISTRICT	COUNTY	ROUTE	SECTION	SHEET
6-0	BUCKS	0000	APS	8 OF 11
SOLEBURY TOWNSHIP				
REVISION NUMBER	REVISIONS	DATE	BY	

# CONSTRUCTION PLAN



CONTINUED ON SHEET #

- DRIVEWAY ACCESS
- PARKING LOT
- BITUMINOUS PATH
- BITUMINOUS MAINTENANCE ACCESS
- GRAVEL MAINTENANCE ACCESS
- GRASS
- STREAM
- DELINEATED WETLANDS

- C--- APPROXIMATE CUT LINE
- F--- APPROXIMATE FILL LINE



FOR PROFILE, SEE SHEET 11

SAFETY REVIEW 4/16/19