

SOLEBURY TOWNSHIP 202 PROPERTY ADVISORY COMMITTEE

July 26 2023– 7:00 P.M.

Hybrid Meeting

MEETING MINUTES

Attendance: Nancy Stock-Allen, Chair, Peter Brussock, Vice-Chair, Kay Reiss, Joanne Reszka, Rickie Yudin, Per von Zelowitz., Kevin Morrissey, Supervisor Liaison, Erika Canterbury, Administrator. Absent: Hanna Howe, Supervisor Liaison, Nancy Minich, Robert Chase Palmer, Robin Seiz, Barbara Zietchick

Zoom recording was turned on.

I. The meeting was called to order.

II. Approval of Minutes – June 28, 2023

- Upon a motion by Ms. Reszka, seconded by Ms. Stock-Allen, the minutes of the June 28, 2023 meeting were unanimously approved.

****Announcement** - Nancy Stock Allen announced an alteration of committee schedule after speaking with Board of Supervisors at July 18th meeting. Committee goal will be to provide recommendations for property use to Board of Supervisors by end of year. August and September will be focused on continued research of property use options.

III. Presentations

A. Nancy Stock-Allen – Play and Art

The presentation’s purpose was to share ideas and examples of spaces that could work with 202 Property. Focused on examples gathered from Architect Brian Hayes, personal experiences, and ideas gathered from places near and far (copy of which is attached). Questions and a discussion session followed.

1. Highlights Included: How to configure play spaces with unique materials and design, play space design for multiple ages, swings and designs to engage all ages, a boardwalk feature as an element that focuses on ecological preservation and sustainability, treehouses and elevated spaces, creative and interesting climbing and rope elements, bringing in natural elements/nature for activity and engagement, interesting seating and resting spots.
2. Additional Highlights: Mixing art with play in playable sculptures and community spaces, using art to define a park, natural elements and materials as art features, seasonal art installations and events to encourage community engagement on the property, seasonal scavenger hunts, outdoor games to engage multi-generational use, ideas for outdoor gathering spaces. A brief talk about toilets.

****Discussion session concluded** with Nancy Stock Allen sharing that the committee needs to take a “deeper dive” into specific examples of different features and elements for the property in order to fully understand what the committee’s recommendations “mean” before providing them to the Board of Supervisors.

B. Per von Zelowitz – The Parking Problem and Opportunity

The presentation’s purpose was to share information on the excess of parking spaces in our country and our community and ideas on how to address parking for the 202 Property by thinking about partnering with surrounding businesses (copy of which is attached). Questions and a discussion session followed.

3. Presentation Benefits Included: Limiting Asphalt coverage, improving traffic flow through Logan Square and utilizing existing stop light, maximize utility of park land,

increase flow of visitors to Logan Square and provide economic gain, park visitors benefit from access to Logan Square and 202 Property.

4. Additional Discussion: Discussion evolved around Nancy Stock Allen's question about the materials used in permeable parking options and how they could be applied to 202 Property.

IV. Upcoming Meetings – Tentative agenda

A. August 23th at 7:00pm

- a. Nancy Stock Allen – Pop-up Events for Community Spaces

V. Public Comment

- No Public Comment Offered

VI. Adjournment

The work session adjourned at 8:02 p.m.

Respectfully submitted
Erika Canterbury

Playspaces



More like







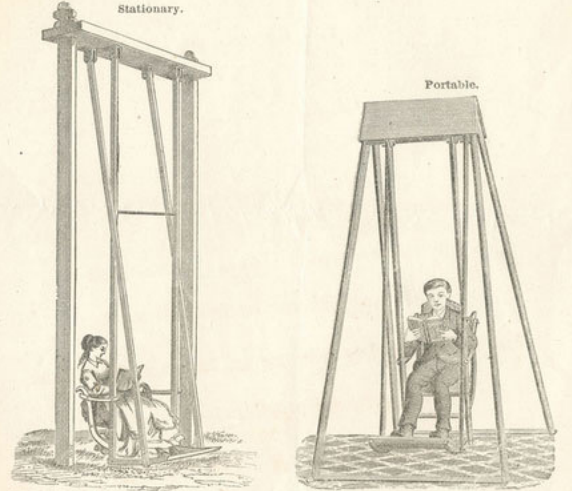
More like this



PATENT
CENTENNIAL AERIAL CHAIR,
 Or Self-Acting Swing,

Now in use in the CENTENNIAL GROUNDS, Fairmount Park, and adopted by the Commissioners of CENTRAL PARK, New York.

These Swings are devoid of any intricate mechanism, the slightest pressure of the feet causing a backward motion, and by repeating the same will elevate you as high as you desire. To stop the chair press as you go forward. It will be found a good substitute for the ordinary rocking chair for invalids or children, its action being so quiet, a person may fall asleep while resting in it. They can be placed on the Piazza, in the Parlor or Nursery, or on the play ground. The **PORTABLE** swing can be folded up and carried from place to place as easy as a step-ladder, and held to the floor by a screw in each leg. The **STATIONARY** swing can be suspended from a Ceiling or Porch, or between trees on the Lawn, without posts, and is furnished with hangers and head-board, but no posts unless specially ordered.



12 ft. Park Swing, seat one person,	\$12.	9 ft. Portable Swing, complete,	\$12.
12 ft. " " seat 2 persons,	20.	9 ft. " " (extra bench),	15.
12 ft. " " 2 " (extra bench),	25.		

The following Institutions and Individuals are now using the Chairs.
 PRESIDENT GRANT, Washington, D. C. THE EMPEROR OF RUSSIA. THE PRINCE IMPERIAL, Chiselmurat, Eng. JOHN W. FORNEY, Esq., Philad'a., MRS. PATTERSON, sister of Ex-President Johnson, J. A. BRADLEY, Asbury Park, Ocean Grove, N. J., GOV. HOUSTON, Texas, G. CLINTON GARDNER, Altoona, Pa., Pres. Western Division P. R. R., CHAS. E. PUGH, General Agent Pa. R. R., Philadelphia. GENERAL GRUBB, Beverly, N. J., COMMISSIONERS, Central Park, New York, DRUID HILL PARK, Baltimore, Md., and others.

State and County Rights for Sale. All communications addressed to
 AN EXCELLENT OPPORTUNITY FOR ENTERPRISING PERSONS.
WM. HEWETT,
 P. O. Box 289, TRENTON, N. J.,
 Or 417 S. Second St., Phila.
 INFRINGEMENTS WILL BE PROSECUTED TO THE EXTENT OF THE LAW.
 See my EXHIBIT, front of LAFAYETTE RESTAURANT, Centennial Grounds.

11423-F-34 (Contd.)









EMBANKMENT SLIDE



CLIMBING NET



PLAYABLE SHEEP SCULPTURE



2-5 WIDE SLIDE



LOGS, BOULDERS, & SAND



KID POWERED WATER PUMP

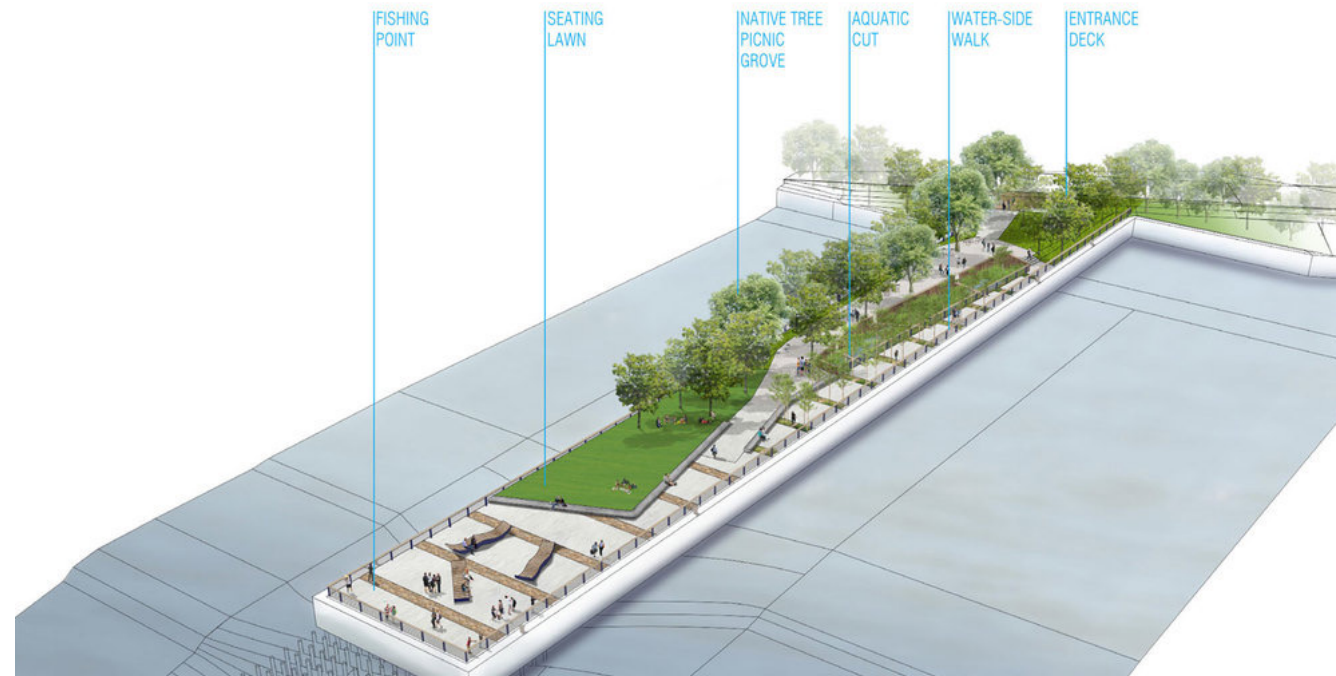


WATER TABLES

HILL TOP ROOM PLAY PRECEDENTS

SUSTAINABILITY

Through extensive site analysis, the design team discovered unique elements that became part of the project's story. We crafted a **design to overcome environmental and infrastructural challenges**, creating opportunity from the pier's unique challenges. Among many sustainability goals, **we utilized recycled materials, physically connected the park to existing walking and cycling trails, and used non-irrigated native vegetation**. All of the site's lighting is **solar powered**. Areas of transitional vegetation, corresponding to tidal activity, were replanted in designed littoral zones that extend from the high-water mark, which is rarely inundated, to permanently submerged shoreline areas. Portions of the concrete slab were removed to expose fluctuating tidal elevations. Through these reveals, representative habitats are visible: freshwater tidal marsh, upland grasses, freshwater shrub wetlands, and wetland woodlands. The public observes the riparian edge and the semi-diurnal tidal activity.





PROPOSED IMPROVEMENTS:

- ① CHARTIERS CREEK BOARDWALK
- ② FLEXIBLE FISHING / BIRDING / EXERCISE PIER
- ③ KAYAK & CANOE LAUNCH
- ④ KAYAK & CANOE RENTALS
- ⑤ PEDESTRIAN BRIDGE TO MCKEES ROCKS
- ⑥ NATIVE WETLAND PLANTINGS

Home / Explore

Manayunk Stoops: Heart and Home (2006)

by Diane Pieri (b. 1947)



Manayunk Canal Towpath
(between Lock and Cotton
Streets)



2006

TITLE

Manayunk Stoops: Heart and Home

ARTIST

Diane Pieri (b. 1947)

YEAR

2006

MEDIUM

Hand-cut Venetian glass tesserae on cast concrete forms

DIMENSIONS

Site 1: The Lock Street Stoops (two) – 21.5 x 48 x 24" each; Site 2: The Mill Stoop – 32.25 x 36"; Site 3: The Children's Stoops (Fish, Hill, & Turtle Stoops) – 20.75 x 36 x 36" each; Site 4: The Garden Stoop – 24.75 x 72 x 36"; Site 5 – The Water Stoops (two) – 24 x 36 x 24" and 15.75 x 36 x 36"

THEMES

Women and Public Art, Functional Public Art

- Commissioned by the Fairmount Park Art Association (now the Association for Public Art)
- Owned by the City of Philadelphia

Museum Without Walls Audio



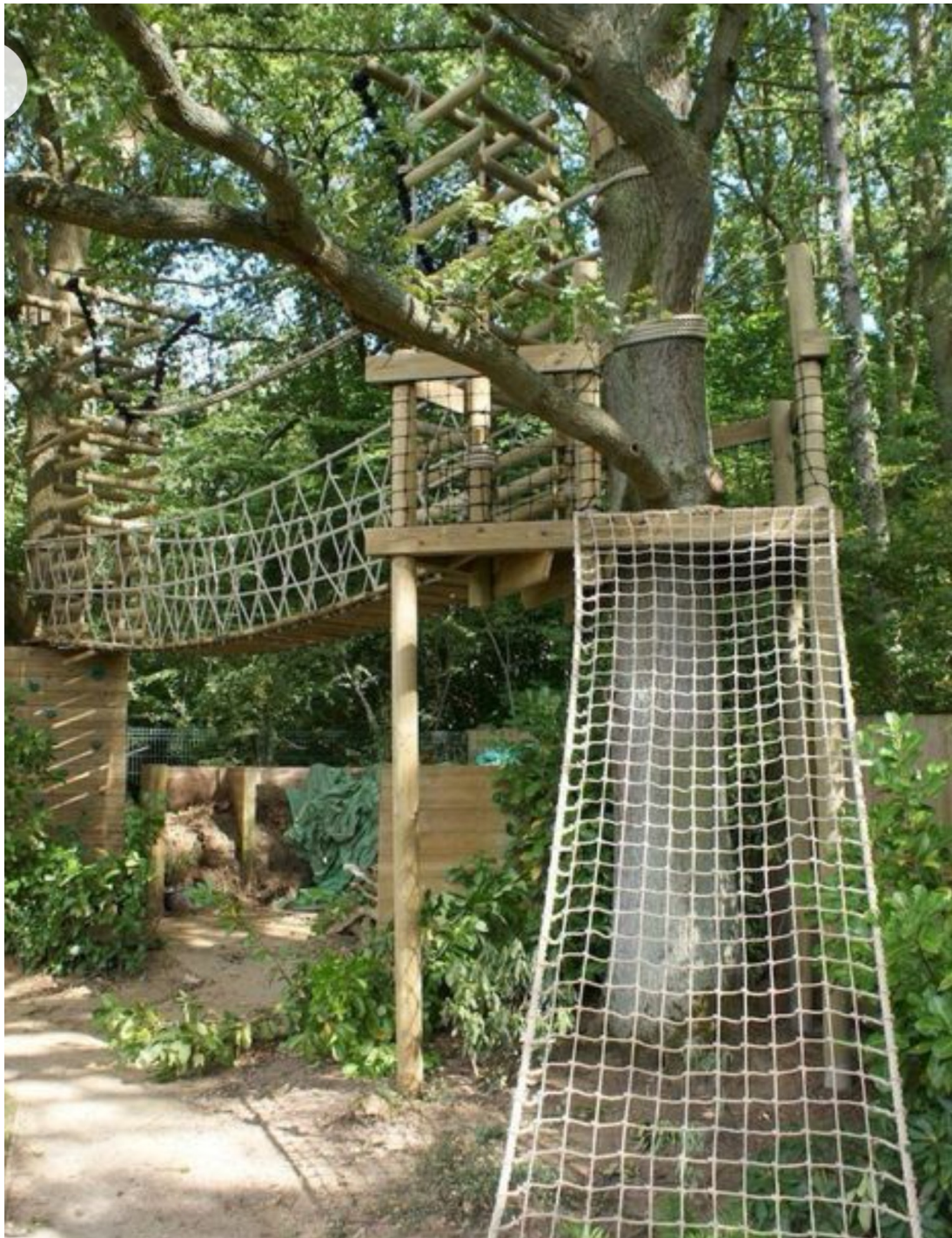
0:00 / 3:11



11 months ago







Article from

The Bu

Dive into the beautiful pro of case stud

broxap Street Furniture
2k f

Play Area Back

More information

Commen

More like this



















Doylestown
Pump Track



Three Sisters Park
Winter



Three Sisters Park
Summer





<https://www.lmt.org/community/911-memorial-park/>

phillyburbs.com

W S G G P P The Secret Garden lower makefield - Google Search

MARKETPLACE
1 For & Place Classifieds


News Sports Entertainment Lifestyle [Opinion] Advertise Obituaries eNewspaper

COLUMNS | Opinion *This piece expresses the views of its author(s), separate from those of this publication.*

New Lower Makefield playground an instant hit

Andy Vineberg avineberg@thebct.com
Published 12:01 a.m. ET Oct. 18, 2014 | Updated 3:00 p.m. ET Oct. 18, 2014

f t e



Steve and Simon Grumann and Faith and Jeff Benedetta check out the new Secret Garden inclusive playground Saturday before a grand opening ceremony held at Memorial Park in Lower Makefield. *Bucks County Courier Times*

The Secret Garden inclusive playground in Lower Makefield Township Memorial Park was open less than 15 minutes Saturday morning, but the reviews are already

Art in the Park

Using Art to Define Our Parks

September 1, 2015, Feature, by Paula Jacoby-Garrett



Over the past 50 years, art increasingly has been used in public parks and recreation centers in a variety of ways to create an interest and connection to the place. According to The Trust for Public Land, “Research shows that parks promote public health and revitalize local economies...they connect people to the great outdoors and to each other.” Individualizing parks through the use of public art can create a site that is meaningful, relevant and personal to the user as well as connect the site to the broader community.

Jack Becker, author of In “Public Art: An Essential Component of Creating Communities,” says public art can “engage civic dialogue and community, attract attention and economic benefit, connect artists with communities, and enhance public appreciation of art.” This type of connection cultivates a relationship to the place that evokes not only a personal association, but can also lead to site stewardship. “In essence, to connect with a place entails forming an emotional or imaginative attachment to the place. Such an attachment can be cultivated through art, since the artist has already formed a connection, and his/her art becomes a bridge for others,” explains Cheryl Glotfelty, co-editor of “The Bioregional Imagination: Literature, Ecology, and Place.”

To incorporate public art, a variety of factors, such as artwork medium, cost, maintenance, community support and relevancy, must be considered. Public art can include large, site-defining installations, temporary art works and nontraditional locations and subjects, as well as multisensory projects. Successful public art projects in parks and recreation centers are as diverse as the parks themselves.



PUBLIC ART FOR EVERYONE

High Line Art is dedicated to expanding the role of contemporary art in public spaces. We commission and produce world-class art projects on and around the High Line, sparking the dialogue that is an essential element of city life.

The High Line App

Enrich your experience with this digital guide to our gardens, art, history, and more—plus useful visitor information.

[Get the App](#) →



PLINTH

PAMELA ROSENKRANZ'S *OLD TREE*

Now on view

For the third High Line Plinth commission, Rosenkranz presents *Old Tree*, a bright red and pink sculpture that animates myriad historical archetypes wherein the tree of life connects heaven and earth.





Andy Goldworthy, Wood Line, Golden Gate National Park











Art in The Parks

Home > Art in The Parks



Art in the Parks

In 2022 the Community Needs Assessment Identified that there as a need for more Arts and Culture in the Parks and was added to the Play for all Plan as an area to address. As a follow up [AOY Art Center](#) and the Parks and Recreation Department put their heads together to find a way to imbed Art within the Parks. After reaching out to [Seward Johnson Atelier](#) located next to the Grounds for Sculpture we identified a project partner that would allow the Township to host sculptures for a six-month period within the parks. The theme of the project is the vision of the Parks Department "Play for All." Artist of Yardley committed \$2,500 to the project, the Township committed \$5,000 to the project and recently [Visit Bucks County](#) Granted the Artist of Yardley an additional \$7,500 for this project. This will allow the Township and the Artist of Yardley to imbed 8 sculptures throughout the parks and implement programming that encompasses all forms of art to include visual and performing arts.

[Art in the Park Opening Reception Photos](#)



AOY Art Center

Sunday Sculpture Stroll with AOY

 Bette Sovinee

 Contact

Already signed up?

[Change my sign up](#)

This is to let us know if you will be attending the Sunday Sculpture Stroll on the specified date. AOY volunteers have been trained by the Johnson Atelier to share with you some inside stories about the sculptures and their maker, Seward Johnson. Please review the available slots below and click on the button to sign up. Thank you!

 **Location** Memorial Park, LMT

 Share   

Dates shown as mm/dd/yyyy EDT



<https://www.lmt.org/community/911-memorial-park/>















Poet's Walk Park, Hudson

















Spring Scavenger Hunt

Ages 4-6



Flower bud



Birds chirping



Wild onion



Bee



Squirrel digging



Flowering tree



Yellow butterfly



A stone warmed by the sun



Tree with brown leaves still attached



Pink Flower

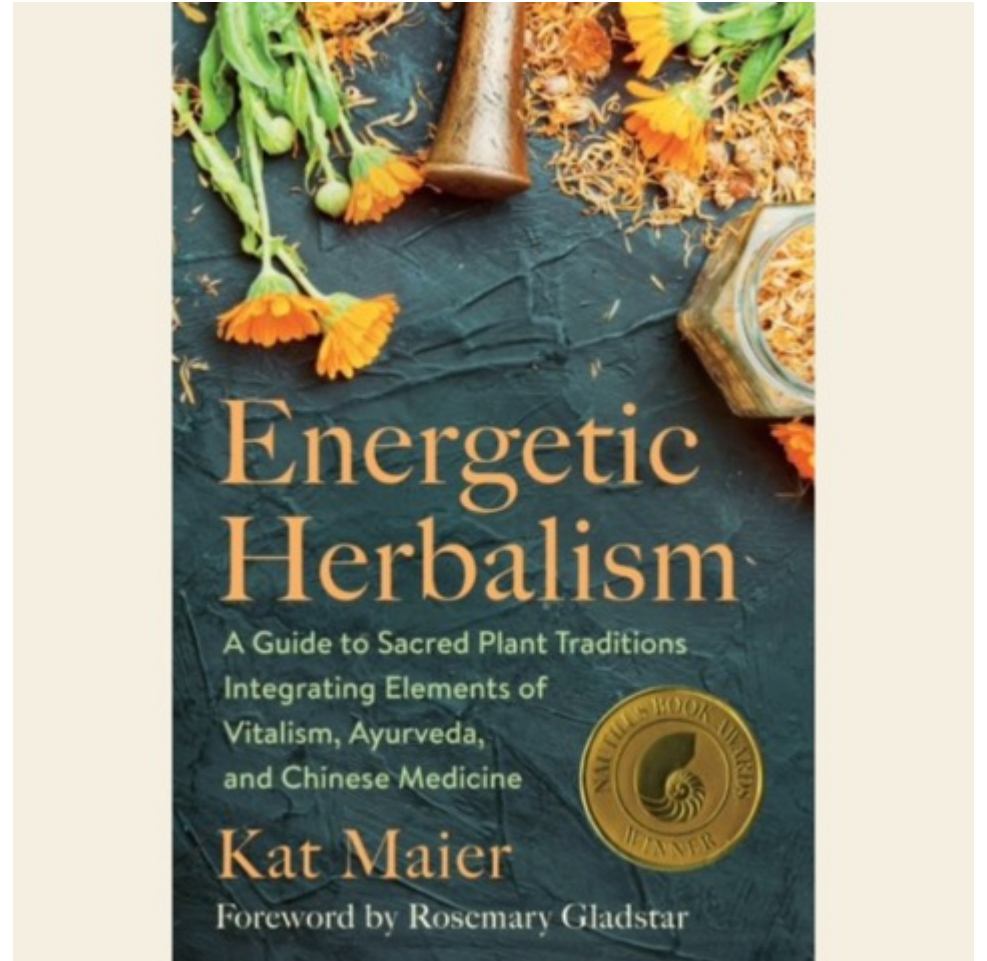


Quacking duck



Turtle

















The parking problem and opportunity

202 Property Advisory Committee

Per von Zelowitz

A national parking problem

Bloomberg

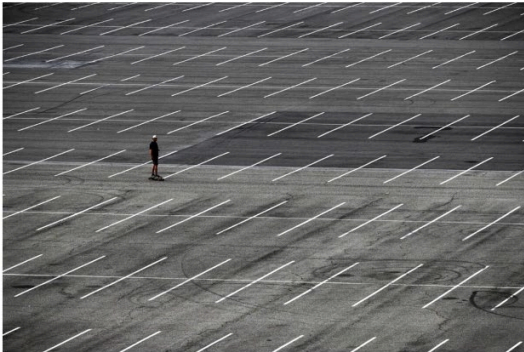
US Edition

• Live Now Markets Economics Industries Tech AI Politics Wealth Pursuits Opinion Businessweek Equality Green

CityLab
Transportation

Parking Has Eaten American Cities

A new study documents the huge amount of space taken up by parking, and the astronomical costs it represents, in five U.S. cities.



Jae C. Hong/AP

By Richard Florida
July 24, 2018 at 11:27 AM EDT

Listen 3:50



Awash in Asphalt, Cities Rethink Their Parking Needs

Local leaders across the nation are overhauling parking requirements for developers, scaling back the minimum number of spots for shopping centers and apartment complexes.

Give this article



646



Source: <https://www.nytimes.com/2023/03/07/business/fewer-parking-spots.html?searchResultPosition=12>

<https://www.bloomberg.com/news/articles/2018-07-24/the-overparked-states-of-america>

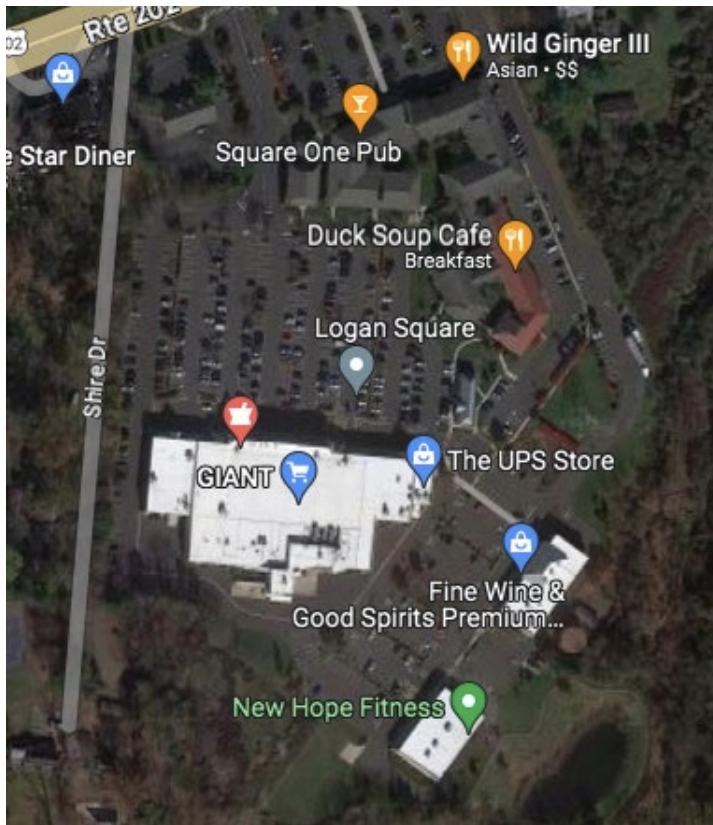
A national economic and environmental problem

The United States has about **two billion parking spots**, according to some estimates — nearly **seven for every car**. In some cities, as much as 14 percent of land area is covered with the black asphalt that engulfs malls, apartment buildings and commercial strips.

And legislation introduced at the national level, known as the **Yes in My Backyard Act**, would require recipients of certain federal funds to show that they were eliminating or reducing barriers to affordable housing, including off-street parking requirements.

A local parking problem & opportunity

Logan Square



New Hope Shopping Center



Plus housing equals a lot of asphalt
and lost utility



The opportunity to leverage Logan Square



Imagine what's possible



Benefits

- Environment
 - Limit asphalt coverage
- Traffic
 - Improve traffic flow through Logan Square and utilize existing stop light
- 202 Property
 - Maximize utility of park land
- Economic
 - Increase traffic to Logan Square
- Convenience
 - Park visitors benefit from access to Logan Square and 202 Property

Thank you