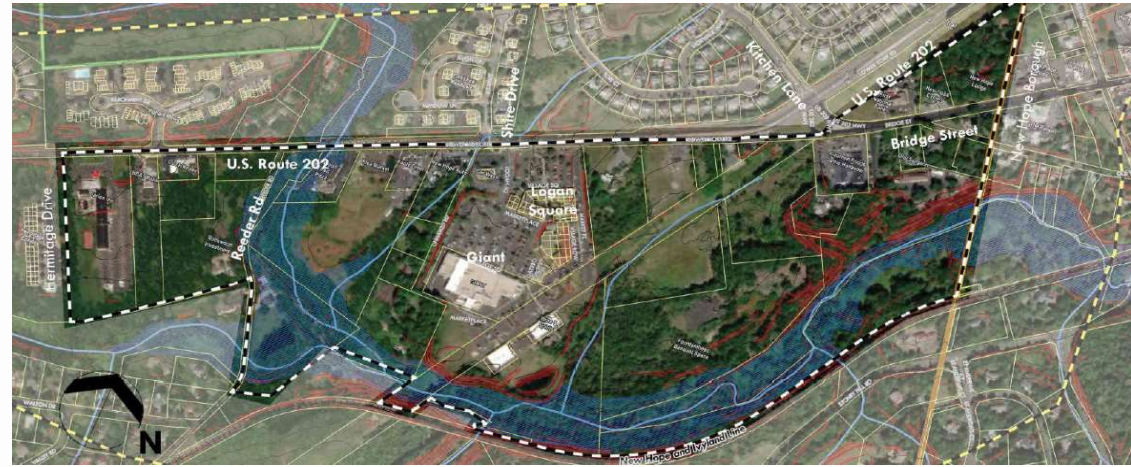
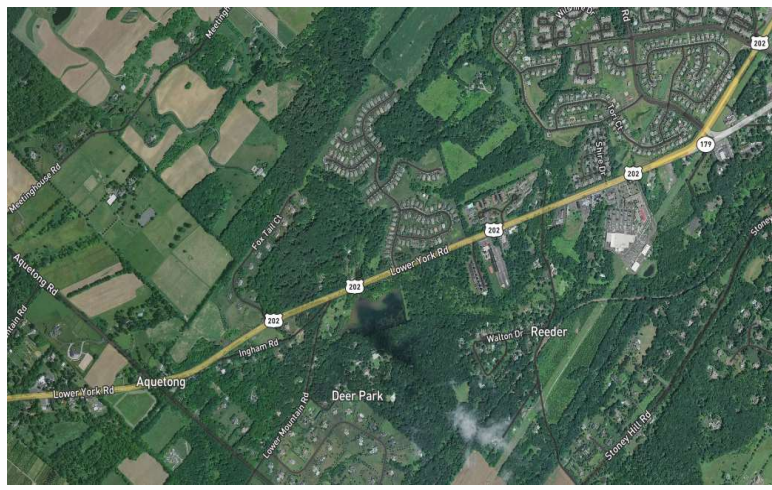


Solebury Township

ROUTE 202 CORRIDOR TRANSPORTATION STUDY PRESENTATION TO BOARD OF SUPERVISORS

PREPARED BY MCMAHON ASSOCIATES

January 19, 2021



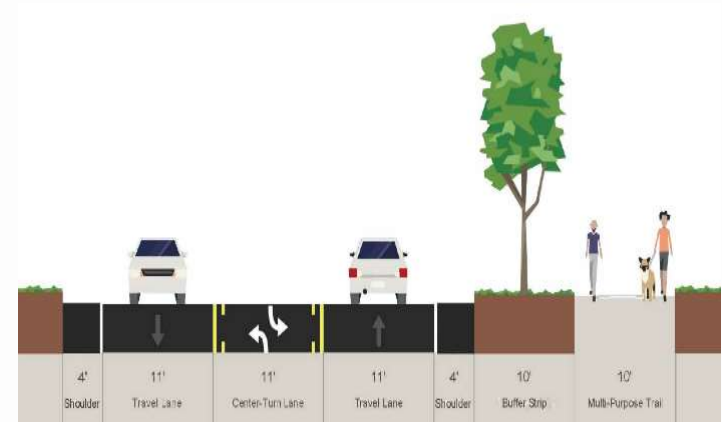
Presentation Outline

- **Transportation Study Purpose and Goals**
- **Route 202 Characteristics**
- **Existing Conditions Evaluation – Issues and Deficiencies**
- **Future Conditions Evaluation – support sustainable change**
- **Results and Conclusions**
- **Short-Term and Long-Term Corridor Improvements & Enhancements**



Study Purpose & Goals

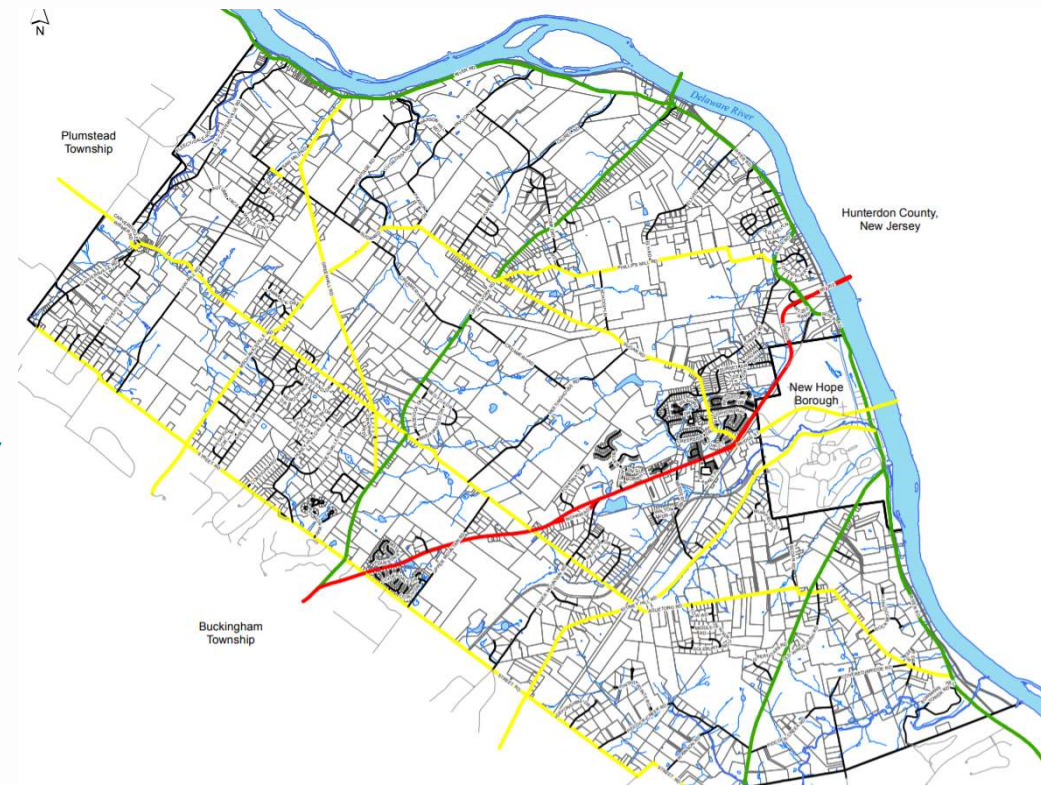
- This transportation plan provides a blueprint for transforming the Route 202 Corridor into a safe, vibrant, comfortable, and desirable area of the Township for walking, biking, and driving.
- Develop a corridor plan to promote sustainable growth
- Improve traffic flow to reduce congestion and emissions along to corridor
- Compatibility with, and enhancement of, adjacent neighborhoods and communities



Solebury Township Trail at Sugan Road

Route 202 Corridor Characteristics

- Route 202 is a principal arterial, approximately 2.0 mile-long segment that traverses the center of the Township.
- Route 202 carries over 16,000 vehicles per day
- Route 202 is a vitally important roadway that provides regional traffic flow and connectivity across Solebury Township, Bucks County, and New Jersey.
- Route 202 provides linkages to a wide variety of key destinations, including schools, office parks, community facilities, retail shops, parks, residential neighborhoods, tourist destinations, and other major roadways.

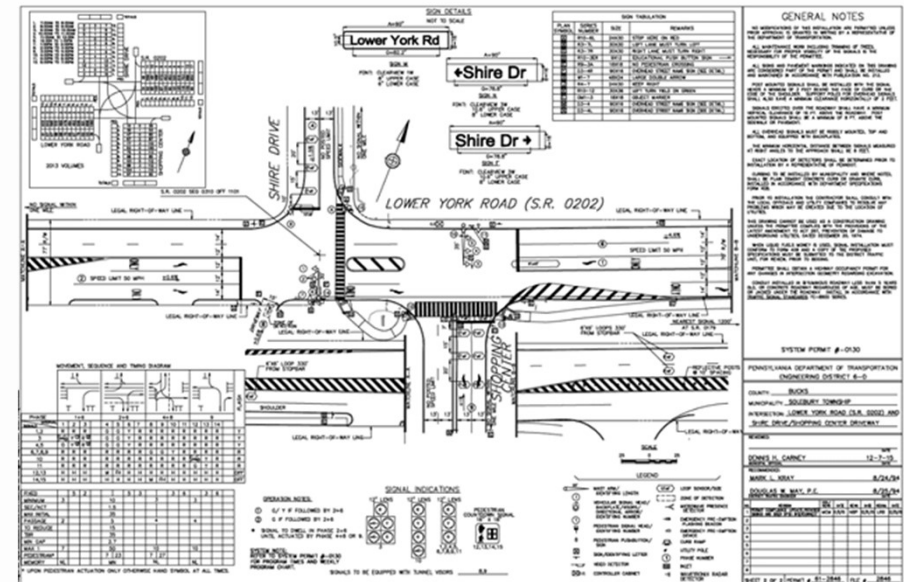


Existing Conditions and Deficiencies

- Heavy daily traffic flows along Route 202 – intensified by seasonal and recreational traffic
- Timing of traffic signals along Route 202 is insufficient and uncoordinated
- Left-turn movements along Route 202 at unsignalized intersections are dangerous
- Shoulders are non-existent or not wide enough to move around cars turning left
- Traffic delays and vehicle queues at the intersection of Route 202 and Shire Drive/Logan Square Shopping Center - off-set intersection and signal timing
- Pedestrian/Bicycle accommodations provided within the study area are expanding, but still limited
- Pedestrian crossings along Route 202 are desired - minimum requirements must be met for new uncontrolled midblock crossings

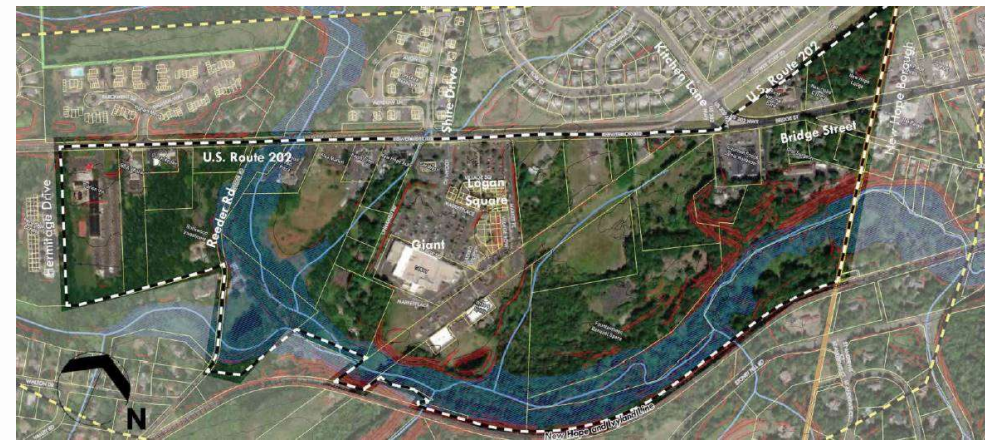


Existing Queueing Issue along Route 202



Future Conditions Evaluation

- Evaluated future year (2040) traffic conditions
- Regional traffic growth accounted for as recommended by PennDOT and DVRPC – includes traffic growth from areas outside Solebury Township
- Local traffic growth from recreational (Aquetong Spring Park) land uses, as well as planned land development (Commercial District) is anticipated to generate additional traffic along corridor
- In order to improve existing traffic conditions and help in accommodating the long-term future traffic demand throughout the Route 202 Corridor, traffic improvements were evaluated

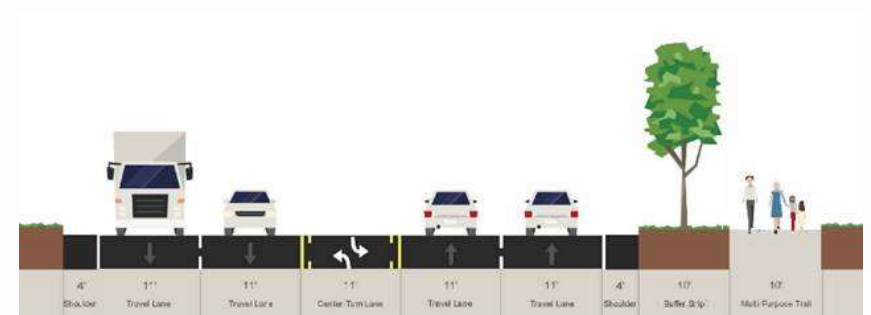


Corridor-Wide Improvements

- Optimize signal timings and provide equipment upgrades at all signalized intersections to maximize operations and traffic responsiveness
- Provide a uniform 3-lane cross-section along Route 202 from Aquetong Road through Reeder Road to improve safety
- Provide a 5-lane cross-section along Route 202 from south of Shire Drive to Kitchens Lane to improve safety and reduce congestion/vehicle emissions
- Provide a multi-use trail along one side of Route 202 to accommodate multi-modal transportation use along the corridor for sustainable growth
- Enhance corridor by providing a planted buffer strip to separate vehicle traffic and pedestrian/bicycle traffic



Route 202 from Aquetong Road through Reeder Road

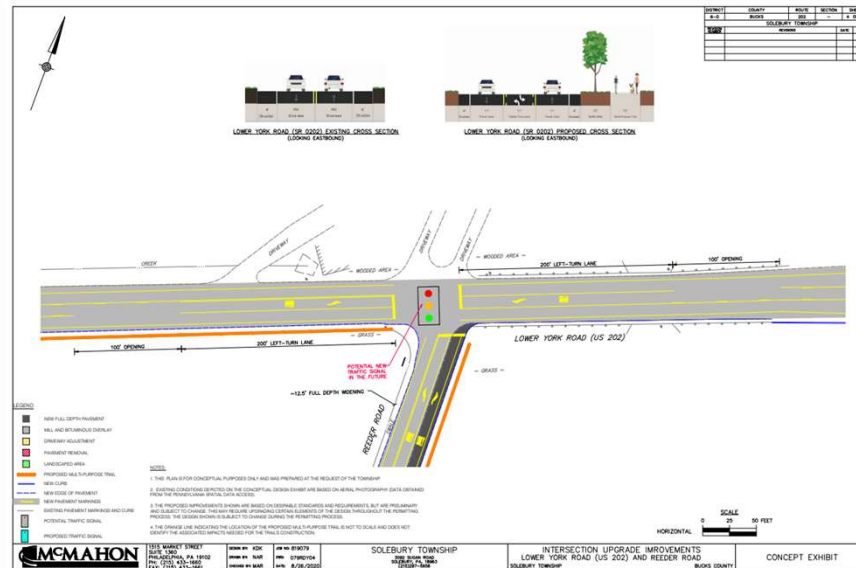


Route 202 from south of Shire Drive to Kitchens Lane

Route 202 Intersection Improvements

Lower York Road (Route 202) and Reeder Road

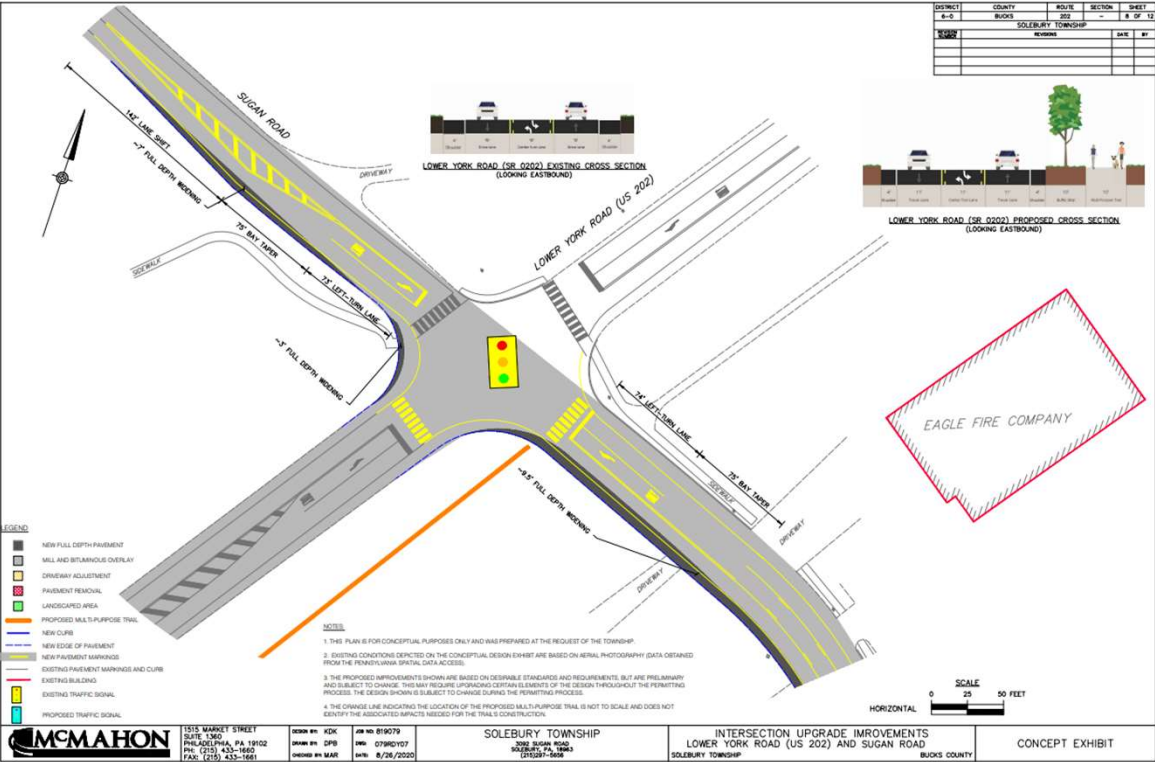
- Provide separate left-turn lanes along the Route 202 approaches – improves issue of vehicle delays and reduces the potential for rear-end crashes
- Widen Reeder Road approach to provide separate left and right lanes to improve circulation
- Township owned lands along the northeast quadrant of the intersection allow for operational and safety improvements at the intersection – including larger turning radii and improved sight lines for vehicles exiting Reeder Road
- Provide curb ramps, pedestrian crosswalks, and ADA upgrades for increased safety



Route 202 Intersection Improvements

Lower York Road (Route 202) and Sugasn Road

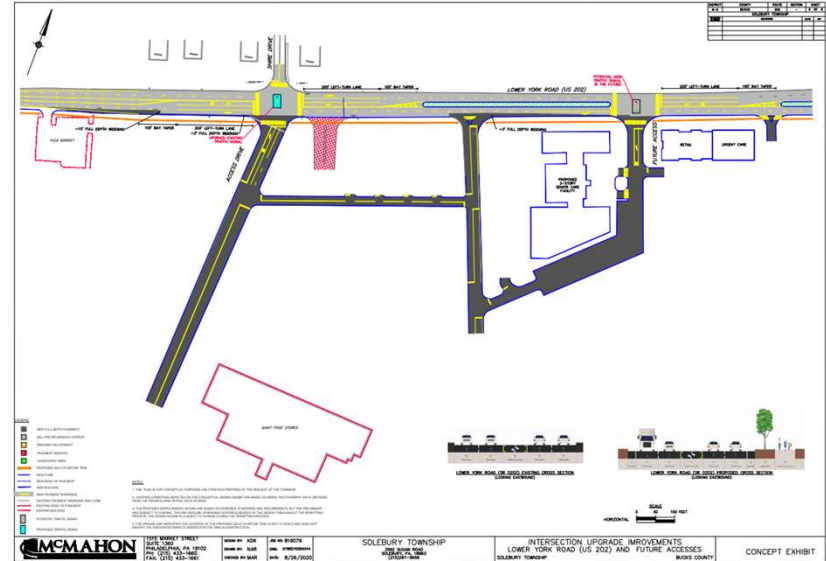
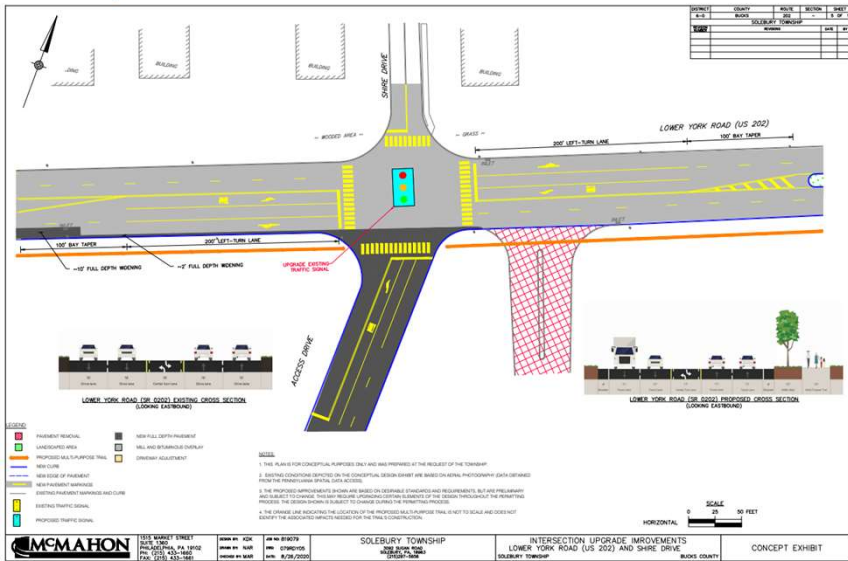
- Minor widening and re-stripping along Sugasn Road to provide separate left-turn lanes
- Modify traffic signal with phasing for left-turn vehicles; and Smart Technology to maximize intersection capacity and efficiency – both reducing vehicle emissions
- Provide upgrades to the ADA curb ramps, pedestrian crosswalks, and ADA/pedestrian traffic signal equipment for increased safety and accommodations for Multi-Use Trail



Route 202 Intersection Improvements

Lower York Road (Route 202) and Shire Drive/Logan Square Shopping Center

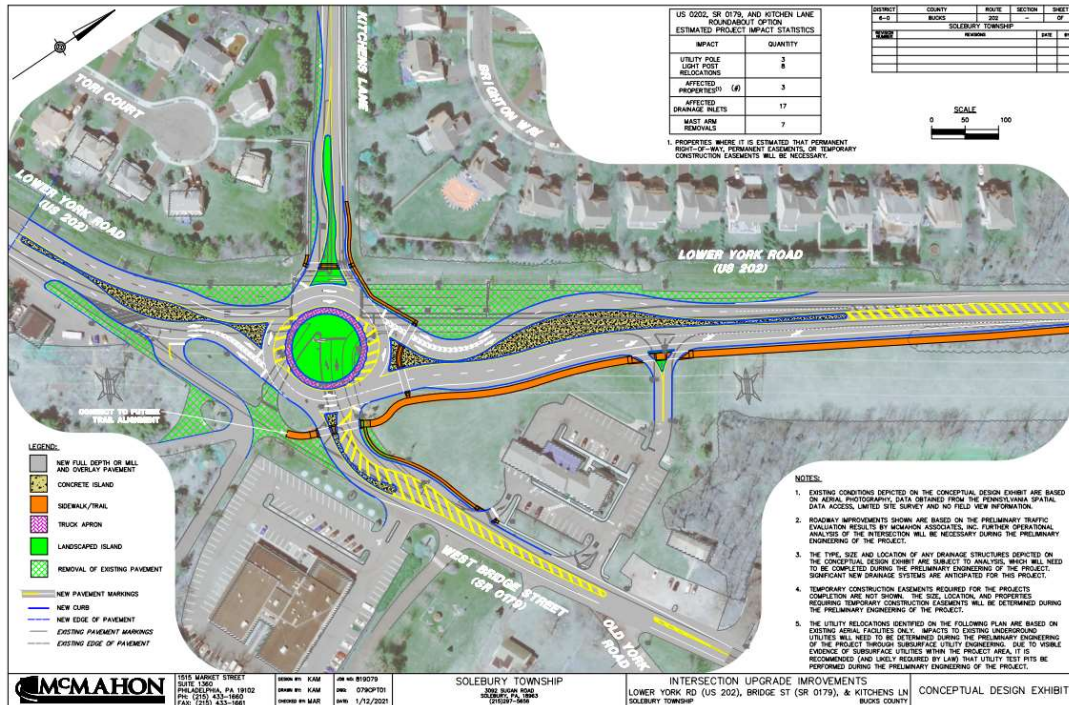
- Modify the intersection to align the Logan Square SC access with Shire Drive to eliminate the existing off-set intersection and split phasing of traffic signal
- Convert the existing northbound right-turn lane into an additional northbound through lane to improve vehicle flow and reduce vehicle queues
- Complete upgrade of the traffic control signal to provide video detection, dilemma zone detection, and provide advanced Smart Technology
- Provide upgrades to the ADA curb ramps, pedestrian crosswalks, and ADA/pedestrian traffic signal equipment for increased safety and accommodations for Multi-Use Trail



Route 202 Intersection Improvements

Lower York Road (Route 202) and Kitchens Lane/Bridge Street (Route 179)

- Construct a multi-lane roundabout with two lanes along the Route 202 approaches, two lanes along the Bridge Street approach, and one lane along the Kitchens Lane approach. Remove traffic signal
- Benefits include additional green space along Route 202; greater separation of intersection from residential neighborhood; eliminates congestion; reduces vehicle emissions; reduces vehicle speeds



Recommendations, Project Priorities, and Next Steps

Priority Projects

- Route 202 and SC Access/Shire Drive intersection realignment improvements
- Route 202 – 5-lane cross section from west of Shire Drive through Kitchens Lane
- Route 202 and Lower Mountain Road intersection improvements
- Continue to design and construct the Route 202 Multi-Use Trail in segments

Short-Term Project Goals

- Route 202 and Aquetong Road intersection improvements
- Route 202 and Reeder Road intersection improvements
- Route 202 and Sujan Road intersection improvements

Long-Term Project Goals

- Route 202 – 3-lane cross section from west of Aquetong Road to east of Reeder Road
- Route 202 Multi-Use Trail along entire length of corridor within Solebury Township limits
- Route 202/Route 179/Kitchens Lane Roundabout

Next Steps

- Continued collaboration among the various stakeholders to adhere to the Township's transportation goals and to encourage the implementation of this plan over time