

**SOLEBURY TOWNSHIP
PARKS and RECREATION**

3092 Sugas Road, P.O. Box 139
Solebury, PA 18963
Ofc: 215-297-5702 Fax: 215-297-8402
soleburyparks@soleburytp.org



MINUTES OF THE REGULAR MEETING – October 26, 2023

PRESENT IN PERSON: Nancy Stock-Allen, Dan Dupont, Marc Blucas, Kevin Campbell, Michael McKenna, Kim Wilson, Barbara Zietchick, P&R Director Dudley Rice and Supervisor Liaison Kevin Morrissey

PRESENT VIA ZOOM: None

ABSENT: Dan Morrin Jr.

OPENING OF MEETING

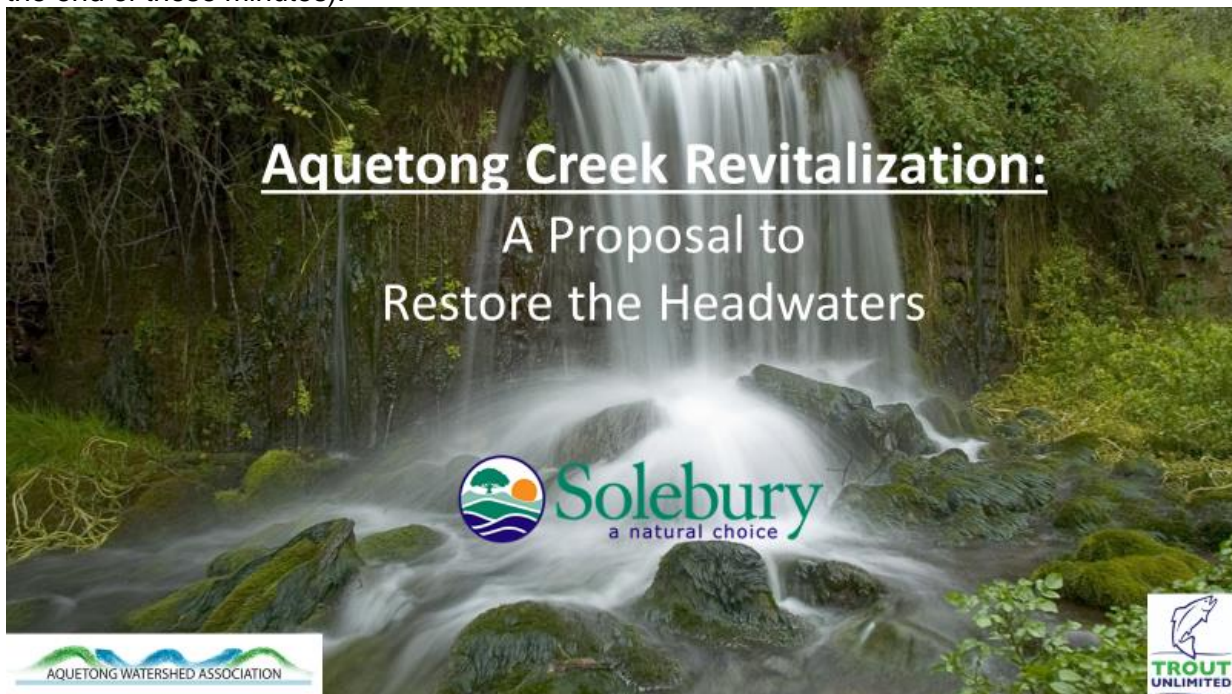
Chair Dan Dupont called the meeting to order at 7:00 p.m.

APPROVAL OF MINUTES

MOTION 23-08 On a motion by Nancy Stock-Allen, second by Barbara Zietchick, the minutes of the September 28, 2023 regular meeting were unanimously approved.

ANNOUNCEMENTS / PRESENTATIONS / CORRESPONDENCE

Mike Zolkewitz, VP of the Aquetong Watershed Association (AWA), and Craig Sutton, Trout Unlimited and AWA Director, appeared before the P&R Board seeking support for a proposal to restore the headwaters to Aquetong Creek. (The complete slide presentation is attached to the end of these minutes).



Following the presentation, discussion and questions from the P&R Members, the following action was taken.

MOTION 23-08: On a motion by Dan Dupont, second by Michael McKenna, the Board [of Parks and Recreation] recommends that the Supervisors continue initial exploratory work to assess the viability of proposals to restore the upper portion of Aquetong Spring [creek], including assessments of costs and potential grants. All members present voted "Aye"

FINANCE REPORT

Board members reviewed the P&R budget report.

SUBDIVISIONS / LAND DEVELOPMENTS

None

REPORTS ON FACILITIES

Board members reviewed the facilities report. The Director noted the following items.

A meeting was held at the Township on October 16 with Rich and Maggie Strucker and the Township Manager, staff, and Supervisor Chair Mark Baum Baicker on pickleball noise at the courts and possible solutions. The issue will be on the BOS agenda at their Nov 9 meeting.

Solebury Township was notified on October 20 of a grant award of \$50,000.00 from DCNR's Community Conservation Partnerships Program for the Comprehensive Park, Recreation, Open Space, Trail and Greenway Plan Planning. A Grant Award letter has been sent to the Chief Elected Official confirming the grant award.

Before DCNR can execute and send the grant agreement they must confirm several key pre-contract details. After confirmation of the pre-contract details, the Grant Agreement will be processed. Solebury Township can't proceed with any project activity until receipt of the fully executed Grant Agreement and receipt of the official approval to proceed from the DCNR project manager.

REPORTS ON PROGRAMS

Board members reviewed the facilities report.

EVENTS

Members reviewed and discussed the upcoming Trunk or Treat at NHSSD on Oct 31.

Dan Dupont will coordinate the Halloween Community Safety Night on Oct 31.

COMMITTEE REPORTS

The Route 202 Property Committee is making progress towards some final recommendations to the Board of Supervisors and will share the report with P&R at the same time.

OLD BUSINESS

Nancy Stock-Allen and Dan Dupont will get a copy of the updated Celebration Tree Program to the Director for review.

NEW BUSINESS

None

PUBLIC COMMENT

Dan Dupont noted that Mike Kerins was in the audience and has applied for the vacant position on the P&R Board. Nancy Stock-Allen reported that the welcome sign and eight interpretive signs were finished and would be installed at Aquetong Spring Park November 1st and 2nd, weather permitting.

ADJOURNMENT: The meeting was adjourned at 8:10 p.m.

Respectfully submitted,

Dudley Rice

Dudley Rice, CPRP, CPSI
Director of Parks & Recreation

Aquetong Creek Revitalization:

A Proposal to
Restore the Headwaters



Solebury
a natural choice





AQUETONG ENVIRONMENTAL AND HISTORICAL CENTER

~ SOLEBURY TOWNSHIP PENNSYLVANIA ~



- PARKING AREA / ENTRANCE**
- Welcome sign.
 - Entrance - one-way traffic.
 - Boardwalk in infiltration swales - treat parking lot run-off.
 - Overflow parking - grass black peavers.
- STORMWATER TREATMENT**
- Vegetated Swale - carries overflow from infiltration basins to pond.
 - Open Water - receives stormwater runoff from 63.20a and vegetated Swale. Minimum 10' depth for bottom release of water.

- LAWN AREA**
- Existing trees.
 - Well to be capped.
 - Terraces for picnic tables - constructed of indigenous fieldstone and planted with native flora.
 - Trail Head for Wetland Trail - as if guided tours with trail maps.
 - Existing House - Educational Center houses displays of natural and cultural history of site; trail maps; ecology and wildlife information.

- INGHAM SPRING/HISTORY TOUR**
- Spring Trail - Handicap accessible.
 - Educational Signage.
 - Information about the spring.
 - Restored well, waterbill and walkway across spring.
 - Small Amphitheatre converted from existing structure.
 - Restored hatching pens.
 - Observation deck and boardwalk.
 - Ingham Spring.

- WETLAND TRAIL**
- Boardwalk trail through wetlands.
 - Mud flats.
 - Restored stream channels through site of existing lake.
 - Observation deck.
 - Old tree snags add structure.
 - Tree and shrub grove provide wildlife habitat.
 - Shrub plantings along restored stream channel for habitat and soil retention.

- HICKORY TRAIL**
- Observation deck and boardwalk where needed. This path traverses the restored wetland.
- WATERFALL TRAIL**
- Re-graded Dam - 40' notch cut into dam to free Aquetong Creek.
 - Step Pools/Waterfalls, unlike restored stream channel - to the existing stream.
 - Plunge Pool.
 - Stairway down to Plunge Pool.
 - Stone observation and rest area.

- OLD PAPER MILL/HISTORIC HOUSE SITES**
- Archaeological education test pits. Education to be conducted at the center, in the amphitheatre and at picnic terraces.
- SITE WIDE FEATURES**
- Bird Nesting boxes and educational signage.



VIEW A - RESTORED STREAM

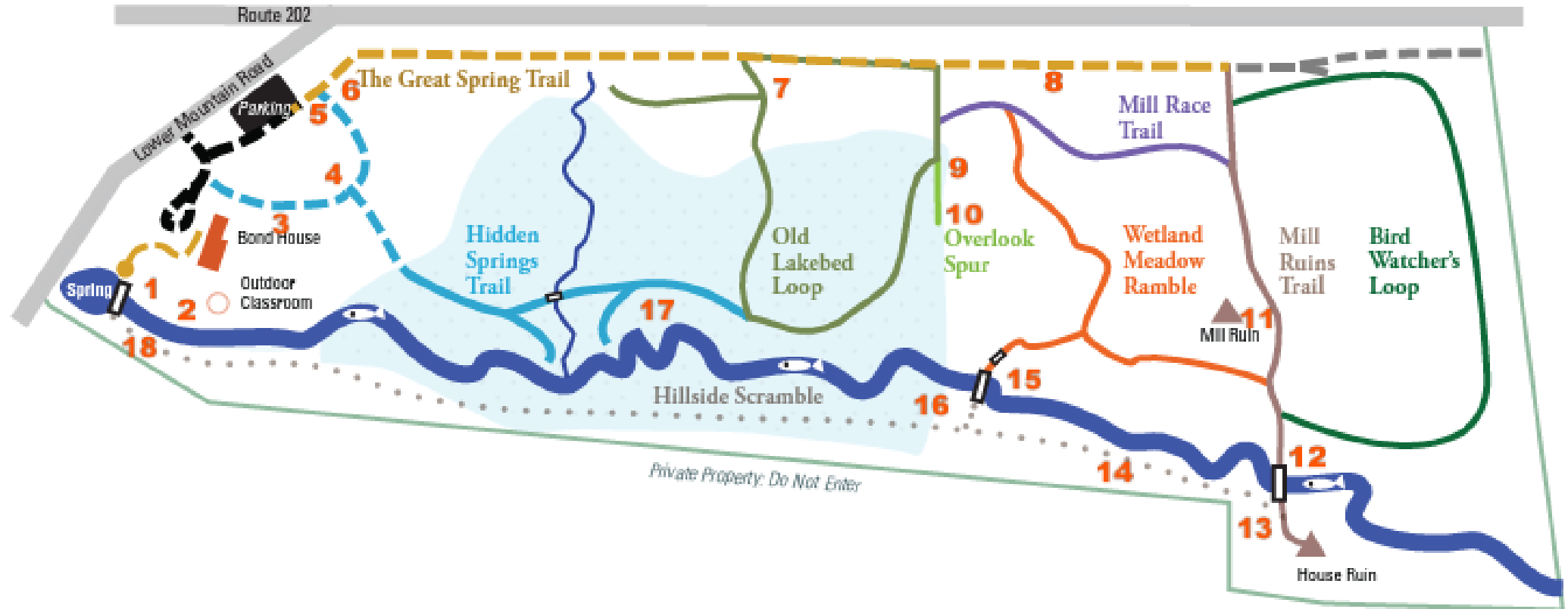


VIEW B - BOARDWALK TRAIL

PREPARED FOR
BUCKS COUNTY CHAPTER OF TROUT UNLIMITED
 412 MANOR DRIVE, DUBLIN PA 18917, 215-249-5085

CONCEPT DEVELOPMENT
 FX BROWNE INC, 1101 S. BROAD STREET, LANSDALE, PA 19446
 AUGUST 2008



ILLUSTRATIVE GRAPHICS
 JEAN M. ZIMMERMAN GARDEN DESIGN INC, ORELAND, PA 19075, 215-860-4078



Aquetong Spring Park Trails and Features

Please *remain on the trails* to protect the evolving plant life emerging from the still-settling lakebed and to preserve hillside soil integrity.


The trail system in Aquetong Spring Park has varied surfaces: ADA-compliant paved, as well as easy to moderate non-ADA-compliant loose gravel, wood chips, and mowed lawn trails. Additionally the Hillside Scramble is a dirt path on steep slopes with exposed tree roots. Please explore at your level of comfort.

-  ADA compliant
-  Uneven surface, steep slopes marked by white blazes on trees

 Mill ruin, House ruin

 Trout Habitat

 Bridge

 Dogs must be leashed and dog owners must clean up after their pets in all park locations.

1 - 18 Bench Locations (Approx)



High Quality – Cold Water Fishery



pennsylvania
FISH AND BOAT COMMISSION

Reproducing Wild Trout Waters

Pennsylvania Natural
Heritage Program



Core Native Habitat

Aquetong Spring Park

**Ingham Spring Dam
Removal Study**

2005
Trout Unlimited

**Aquetong Environmental
and Historical Center
Master Plan**

2005
Trout Unlimited

**Aquetong Creek Cold
Water Heritage**

2007
Trout Unlimited

**Ingham Spring Dam
Breeched**

2015
Solebury Township

**Restoration Proposal
Finalized**

**Native Brook Trout
Reintroduced**

2017
*Solebury Township
And Princeton Hydro*

**Aquetong Spring Park
Master Plan
and
Restoration Phase 1 and
Phase 2**

2018
Solebury Township

**Restoration of the
Headwaters Concensus**

2023
*Trout Unlimited
AWA
Aquetong Spring Adv Cmt.
Pennsylvania Fish & Boat
Princeton Hydro*

Aquetong Creek Revitalization: “What Needs to be Done?”



Solebury
a natural choice

Aquetong Creek Revitalization: Why do the headwaters need restoring?

“HEALTHY HEADWATERS ARE ESSENTIAL TO PRESERVE OUR
FRESHWATER RESOURCES”

Five key habitat factors are missing in our headwaters:

- Limited to no pool habitat
- Limited to no overhead cover
- A lack of suitable spawning substrate
- Barriers to movement
- Threats from invasives

How will we all do this?:

Aquetong Creek Revitalization: Mission Statement

Assess the current stream conditions and advocate for science-based improvements which accelerate the natural process of restoring Aquetong Creek to create a sustainable coldwater habitat for native trout and all aquatic species while continuing to ensure high quality water for the community

Aquetong Creek Revitalization: Our Process

1. Form a team (AWA, Bucks County TU)
2. Gain input from the experts (PA F&B, PA and National TU, AWA, Princeton Hydro(PH), Eastern Brook Trout Joint Venture)
3. Develop a plan (PA F&B, National TU, PH)
 - a) Including repairs to 2020 revitalization work
4. Gain agreement on the plan (Twp Manager, PH)
5. Build consensus among community constituents (Solebury P&R, Solebury EAC, AWA)
6. Gain approval from Solebury Twp Supervisors

Aquetong Creek Revitalization: Next Steps if Approved

1. Get quotes for the work
2. Determine if a volunteer approach is viable
3. Seek funding – Grants, Township, etc
4. Implement – Likely targeting spring '24 or '25

Questions?