

Solebury Messenger

A bimonthly publication of Solebury Township

Vol. 22, No. 4

SUMMER ISSUE

JULY 2016

Solebury's Deer Management Program

An Ongoing Need for Landowner Participation

In March, the U.S. Dept. of Agriculture conducted a deer count in Solebury, estimating that 197 deer per square mile currently live in the Township.

This sum is a 56% increase over the 2015 count of 126 deer per square mile, and a nearly 370% increase over the 2008 count of 42 deer per square mile, which was taken right after a culling. In fact, the current count is the highest since the Township began documenting the deer population in 2006.

"The deer overpopulation is an issue that will not address itself," Supervisor Chair Helen Tai stated. The board has identified deer management as one of its top priorities for 2016, and has charged the Environmental

Advisory Council (EAC) with working on the issue.

While no target has been set for a reduction, the goal of the USDA culling in 2006-2007 was 63 deer per square mile, which illustrates how far above ideal the density of the deer herd is now.

As an interesting point of reference, an article on the Pa. Dept. of Conservation and Natural Resources website states that deer are estimated to have numbered 8-10 per square mile at the time of European colonization, a figure that was held in check by both animal predators and greater human reliance on hunting as a source of food.

(continued on page 5)

Hurricane Season Arrives

Sign Up for Emergency Notifications Now

The Atlantic hurricane season officially runs from June 1 to November 30, but peaks sharply from late August through September, which is usually the time we in the North Atlantic region feel the brunt of storms that travel this far.

Make sure you're signed up for the emergency notifications you need before a hurricane-related problem strikes.

You can sign up for as few or many of the options below as you prefer.

ReadyNotifyPA.org

Use this website to ensure you receive Weather Warnings issued by the Township; the warnings are issued *only* for true emergencies.

If you wish, you can choose additional notification options. And you can specify exactly how you want to be notified.

Solebury Email Alerts

Township email alerts announce road closings, Police Dept. warnings, changes in meeting times and locations, articles posted on Township website, and more.

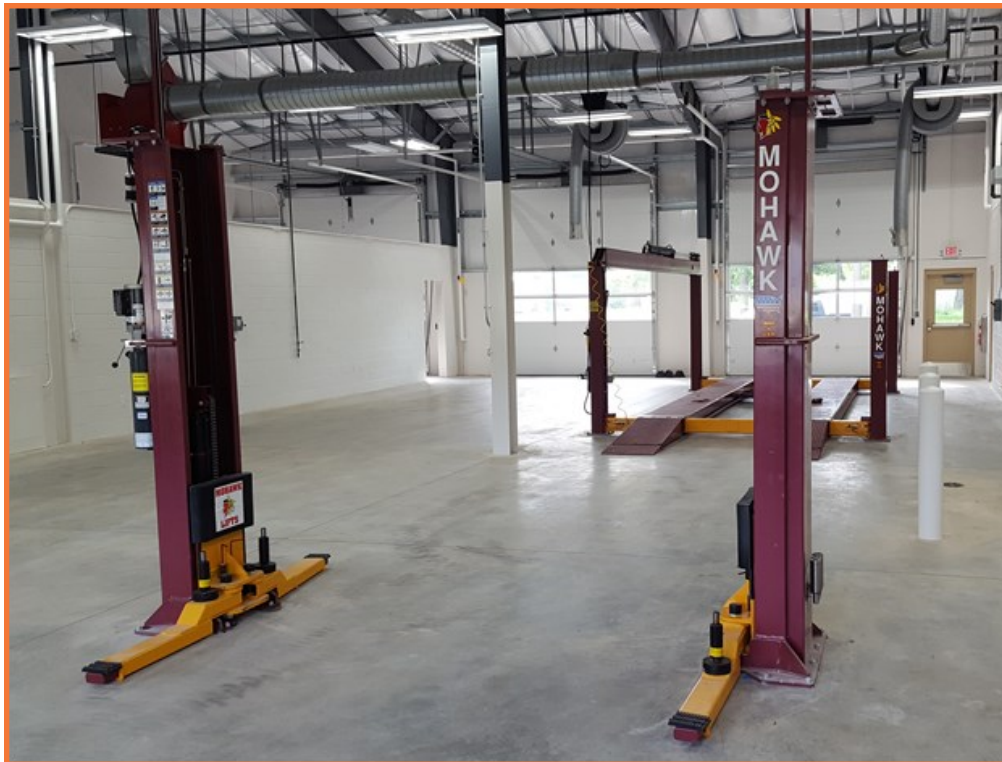
To sign up, visit SoleburyTwp.org, click the News tab, then click "Email Alerts."

Enter your email address to subscribe, and unsubscribe at any time.

Follow Police on Social Media

Facebook: [facebook.com/SoleburyPolice](https://www.facebook.com/SoleburyPolice)

Twitter: [@soleburypolice](https://twitter.com/soleburypolice)



HYDRAULIC LIFTS: Public Works employees will use the new two-post lift in the foreground to maintain Township police cars. In the past, oil changes and minor repairs were done by outside garages, but the new Public Works facility (see p. 4) enables the crew to do the work. The new four-post lift in the rear ground, for larger Township equipment and trucks, will allow employees to maintain and repair these vehicles safely and indoors. Formerly, the crew did this work outside using jacks and other equipment—often in bad weather and the middle of the night—because when the vehicles (especially trucks used for snow removal) break down, they tend to do so when they are in use.

What's Inside?

- ◆ Township Calendar 2
- ◆ 2nd Annual "Solebury Day" 3
- ◆ Household Hazardous Waste Events 3
- ◆ New Public Works Facility 4-5
- ◆ Planning for Emergencies *special insert*
- ◆ Summer Child Safety 6
- ◆ Medication Take-Back 6
- ◆ Motorcycle Safety 6
- ◆ Township Directory 7
- ◆ Parks and Recreation Events 7



Dear Taxpayer:

Through the **Solebury Messenger**, the Township gives you, the taxpayer, firsthand information about Township matters. In these pages, you will read about what is being done to preserve and improve the quality of life as you know it, as well as how your hard-earned tax dollars are being spent.

The **Solebury Messenger** is created by Kay Hayes and Marie Collins, of School Window Publications; the newsletter celebrated its 20-year anniversary with the publication of the Nov. 2015 issue.

This bimonthly periodical is primarily ad-sponsored—a method which allows the Township to provide taxpayers with six professional newsletters each year for a fraction of the actual cost. To place an advertisement supporting this periodical, contact Kay (609-397-8483 or ads.schoolwindow@gmail.com).

If you live in the Township, but are not currently receiving a copy of the **Solebury Messenger** through the mail, please contact Kay so that she can add your name and address to our mailing list.

Other correspondence should be directed to the appropriate Township official. For more information, see the Township directory on page 7.

Kay and Marie



Printed on recycled paper by Hermitage Press, Trenton, NJ
© School Window Publications

A NOTE TO OUR ADVERTISERS

Publication of advertisements in the Solebury Messenger does not represent endorsement by the Township or its officers of any products, services, businesses, or ideas mentioned. Also, no political advertisements will be accepted.

Your ad could be here.



609-397-8483

ads.schoolwindow@gmail.com

Township Calendar

*Calendar information is subject to last-minute changes.
Confirm all dates and times with the Township office.
All meetings are held at Solebury Township Hall.*

July

7/4	HOLIDAY—TOWNSHIP OFFICES CLOSED
7/11	Historical Architectural Review Board, 7 pm
7/11	Planning Commission, 7 pm
7/12	Environmental Advisory Council, 7 pm
7/19	Board of Supervisors, 7pm
7/21	Land Preservation Committee, 7 pm
7/28	Parks & Recreation Board, 7 pm

August

8/1	Historical Architectural Review Board, 7 pm
8/8	Planning Commission, 7 pm
8/9	Environmental Advisory Council, 7 pm
8/16	Board of Supervisors, 7pm
8/18	Land Preservation Committee, 7 pm
8/25	Parks & Recreation Board, 7 pm



Stay on top of meeting times with email alerts!

Visit: SoleburyTwp.org
Click "Solebury Email Alerts"
and enter your email address.

Copper • Slate • Wood Shingles • Metal Roofing

Solebury Roofing Contractors, Inc.

- Locally owned and operated
- All work installed by owner
- All work 100% guaranteed
- Fully insured and bonded
- Roofing professionally installed since 1970

215-534-0284
Soleburyroofing.com

2302 Street Road Lahaska, PA
Office and Fax 215-794-7634

Township Prepares for 2nd Annual "Solebury Day"

Save the Date: Sept. 17, 10 AM-3 PM, Laurel Park

The Parks and Recreation Board has been busily planning the Township's second annual "Solebury Day"—a community wide event designed to celebrate all that is Solebury by fostering community pride, promoting Township programs, and encouraging volunteerism.

You don't want to miss it!

Scheduled for Sept. 17 at Laurel Park, with a rain date of Sept. 18, the event is expected to include a parade and dress-up contest for pets, a cake-baking competition, a dunk tank, acoustic performances by high school musicians, an art show, a community-oriented softball game (opponents to be determined), and plenty of activities for children, like face-painting,



balloon animals, and craft projects focused on nature and the environment.

In addition, local restaurants and farmers will have an opportunity to showcase their goods, and the fire company will bring a truck to promote fire safety and give eager children a hands-on look at their equipment.

Township advisory committees and other community groups will also be on hand to share information about their activities.

Additional details and events will be announced in the next issue of the *Solebury Messenger*.

Volunteers and vendors who would like to participate should send an email to: soleburyparks@soleburytwp.org

2016 Household Hazardous Waste Recycling Events (No E-Waste)

June 25 Upper Bucks County Area Vo-Tech School
3115 Ridge Road, Bedminster

July 23 Central Bucks South High School
1100 Folly Road, Warrington

CORRECTION: NO JULY 26 EVENT.
The July 26 date included in the May issue was an error.

August 6 Quakertown Community High School
600 Park Avenue (Rear Lot), Quakertown

August 27 Bucks County Technical High School
610 Wistar Road, Bristol



These events are not open to business, industry, or institutions.

Each event is held, rain or shine, from 9 AM-3 PM.

To learn what you can and cannot bring:

- Visit: www.buckscounty.org/recycling
- Call the PA DEP Recycling Hotline: 1-800-346-4242
- Call the Bucks County Planning Commission: 215-345-3400

SAVE THE DATE

2nd Annual Solebury Day

Sept. 17, 10 AM-3 PM, Laurel Park

Rain date: Sept. 18

Come celebrate all that is Solebury!

parade • pet dress-up contest • cake-baking competition
musical performances • art show
community softball game • dunk tank
face-painting • balloon animals • crafts



Planning an Addition or Renovation?

Be smart: Talk to the Township first.

We have a wealth of handouts at Township Hall and on soleburytwp.org (Resources > Documents & Forms > Permits) that provide guidance on different kinds of projects. Also our staff can help you navigate the Township's forms, approval process, codes, and regulations. We're here to help!

Getting it right the first time could save you time and money.

THE PIDCOCK AGENCY



INSURANCE

315 West Bridge St. • P.O. Box 9
New Hope, PA 18938-0009

(215) 862-2001

*Serving the
community
since 1931*

Independent insurance agents representing
HARLEYSVILLE • WESTFIELD TRAVELERS
OHIO CASUALTY • GMAC
FLOOD • MOTORCYCLE • SPECIALTIES
Access to CHUBB and FIREMANS FUND

Call Frank Cosner Jr. or Patty Cosner

www.pidcockagency.com

slatterycompany.com

LANDSCAPE CONTRACTORS

Landscape Masonry & Fine Gardens



SLATTERY & COMPANY

215 630 1752

Solebury Resident

New Public Works Facility Opens

Construction of the Township's new Public Works facility, situated next to Township Hall, was recently completed on schedule and within the amount budgeted.

When the *Solebury Messenger* went to press, it was expected to be in use by early June.

As with the municipal building, an architectural goal of the project was to create a facility that exemplifies best environmental practices and can potentially serve as a model for other construction in the Township.

Among the key features of the one-story, 14,000-square-foot structure, designed by Phillips & Donovan Architects of Bedminster, is a state-of-the-art stormwater catchment and management system that serves two purposes, Township Manager and Public Works Director Dennis Carney said.

The system prevents contaminants from draining into the water supply, and prevents

the stormwater runoff typically generated by structures with large roofs and paved surfaces from rushing across the grass, toward local streams.

To achieve these ends, the site was curbed to contain and direct runoff to specific inlets. Drains in the parking area are equipped with devices that separate water and oil, allowing the latter to be disposed of properly. And a below-ground system contains the stormwater captured by the drains, then directs its slow release into the aquifer.

"This is all part of Solebury's longstanding efforts to protect local water resources," he said.

The fact that structure is heated (see photo on p. 5) will reduce wear and tear on Township vehicles, he added, potentially increasing their life spans; formerly, when these were washed after snow plowing in the winter, they were stored in the unheated barn and never really dried off, Dennis explained.

The new facility will house all Public Works activities in one space. It includes bays for the Township's many diverse vehicles; a drainage area for washing vehicles; an area equipped with lifts to facilitate vehicle maintenance by employees (see p. 1); plus storage areas, offices, a kitchen, and employee locker rooms.

The Board of Supervisors recently identified the decision of whether and when to move forward with construction of a new salt storage building as a priority for 2016. The adjunct structure would be built with a high-pitched roof and front dormer to allow salt delivery trucks to pour an entire season's worth of salt directly into the building.

Currently, trucks dump salt outside when it is delivered. The road crew then pushes it into the pole barn, the capacity of which is limited to the amount of salt needed for two to three storms. ☼



ALL SEASONS LANDSCAPING



Landscape Design & Planting
Hardscape Installation

Est. 1977

Quality Service at Reasonable Rates
Mark Werkheiser, B.S. Ornamental Horticulture

215-345-4289



**A COMPLETE JOB FROM
CONSULTATION TO CLEANUP**

- Spring & Summer Cleanup
- Edging, Pruning, Mulching
- Landscape Renovations

"References Gladly Furnished"
I look forward to hearing from you.
Call now for a free estimate!



No Job Too Small



BARTLETT.

BECAUSE LITTLE EMERALD ASH BORERS
CAN BE GREAT BIG PESTS.

We're Bartlett Tree Experts and with over 100 years of experience, there isn't a pest problem we haven't seen or solved. No matter the size or scope of your needs, our experts can identify and treat most any pest or disease that threatens the livelihood of your trees and shrubs. And every step of the way, we bring a rare mix of local service, global resources and the latest practices to make your landscape thrive. Trees add value to our homes and our lives. And Bartlett adds value to your trees.



For the life of your trees.

PRUNING FERTILIZATION PEST & DISEASE MANAGEMENT REMOVAL
CALL US AT 215.249.1819 OR VISIT BARTLETT.COM

Trinity Day School

6587 Upper York Rd., Solebury, Pa.
215-297-5510

dayschool@trinitysolebury.org
www.trinitysolebury.org/tds

REGISTER NOW FOR FALL 2016
Openings Still Available
Call to Schedule a Tour

Pre-K for 4's and young 5's

Pre-School Classes for 3's

Toddler-Grow for 2½ year olds

- ~ Dedicated to the social & emotional development of the young child
- ~ Small class sizes & gentle atmosphere for learning
- ~ Long-standing, experienced staff
- ~ Faith-based principles support a home-like environment
- ~ Extended full-day program available





SMALL BUT MIGHTY, this unassuming gray box, hanging on a wall inside the new Public Works building, will heat all 14,000-square-feet of the structure. It warms water that is continuously recycled in a closed-loop system, circulating it through tubing embedded in the facility floor.

Attention Residents

Please do not blow leaves and grass clippings onto Township roads. This organic waste can clog storm drains and impede the flow of stormwater from homes, roads, and driveways. In addition, if the waste is carried by storm drains to local waterways, it can cause pollution (1) by increasing the amount of organic waste in our streams and/or (2) by carrying fertilizers, herbicides, and pesticides to the water supply.



Deer Management (continued from page 1)

Habitat Destruction

Today there are no animal and fewer human predators to keep the population of the state animal in check, and the deer herd's needs exceed what the local habitat can provide.

Deer browsing has depleted local woodlands of wildflowers, shrubs, and tree seedlings. In many places, only tree trunks and a few deer-resistant shrubs and plants remain in the forest understory. If left unchecked, this could impact local biodiversity in the long term.

The fact that few young trees can be found in these spaces shows that the destruction also threatens the longevity of Solebury's forests.

Other potential ripple effects include erosion, due to the lack of roots to channel stormwater absorption and recharge the water supply, and the loss of vital habitats for birds and other animals.

Depletion of their own habitat is what causes deer to forage more brazenly in homeowners' gardens and landscaping, and in the crops of local farmers, and this in turn is associated with increased incidence of tick-borne diseases, including ehrlichiosis, anaplasmosis, and Lyme disease. According to the state Dept of Health, Pennsylvania leads the nation in confirmed cases of Lyme disease and has done so for three years in a row.

Lastly, State Farm Insurance reports that, in 2015, Pennsylvania ranked fourth

in the nation for automobile collisions with deer, elk, and moose, noting that the state accounts for 10% of all deer-car collisions nationwide.

Landowners Needed

One way to achieve a reduction in the deer population is to allow hunters to disproportionately target does, but at an April meeting Supervisor Jim Searing noted that the Pennsylvania Game Commission has severely reduced the number of available doe permits available in Wildlife Management Unit 5C (WMU 5C), which includes Solebury north of Route 202.

In 2013, the commission issued 103,000 doe permits in WMU 5C, but it cut the number to 95,000 in 2014, then to 70,000 in 2015.

The EAC is researching strategies to bring about the needed reduction, but key to all of them is landowners granting the Township permission to allow safe and



Safe Deer Management Practiced Here

Solebury needs landowners who are willing to allow safe, legal hunting on their land as part of the Deer Management Program.

Contact Jean Weiss to learn more:

215-297-5656

legal deer hunting on their properties.

Solebury has developed a database of hunters who have been screened to ensure they are experienced, licensed, and committed to the legal and humane harvesting of adequate numbers of deer.

An added benefit of this cooperation is that the meat can be donated to food pantries and distributed to people in need.

The greater the involvement of Solebury landowners, the more effective the reduction will be. 🦌

TINSMAN BROS., INC.
Your Local lumberyard since 1785
Serving all your building needs

BUILDING MATERIALS • CYPRESS BOARDS
CEDAR & FIR TIMBERS

Windows - Doors
Millwork

Masonry Supplies • Windows
Restoration Hardware
215-297-5100
www.tinsmanbrotherslumber.com
6632 OLD CARVERVILLE RD.
LUMBERVILLE, PA
7 miles north of New Hope on Rt 32



**STAND UP
AND BE NOTICED**

with a full-page insert in the
Solebury Messenger

609-397-8483

ads.schoolwindow@gmail.com

facebook.com/schoolwindowpublications

Summertime Child Safety Tips

The Solebury Police Dept. urges parents to stay extra aware of the following child safety concerns:

- Be sure your children know how to dial 911 in an emergency.
- Make sure children know and can spell their surnames, know their parents' names, and know how to contact their parents in an emergency.
- Secure children in approved child safety seats (to age 4), booster seats (to age 8), or seatbelts (8 and older) when riding in vehicles. The back seat is safest.
- Remind children never to talk to, take candy from, or take rides from a stranger; never to help a stranger find a lost pet; and never to open a vehicle door for a stranger. Reinforce that *anyone they don't know is a stranger*.
- Insist that children wear proper safety gear, including a helmet, when biking, skateboarding, or inline skating, and that they abide by the rules of the road.
- Never allow children to swim alone; always make sure an adult is nearby and watching.
- Keep children in eyesight at parks, shopping malls, and public events, and stay aware of the surroundings. Be alert to strangers watching children and report suspicious persons or activities to police immediately.
- Keep a current schedule of children's activities, including times, who they will be with, and how to contact them in an emergency.



SOLEBURY POLICE collected medications for safe disposal at the Giant Food Store April 30 as part of the Drug Enforcement Administration's national Take-Back campaign. NHS Cares Project Director Barbara Gross (center) and Solebury Police secretary Nicole Beauregard helped Detective Jonathan Koretzky during the semi-annual event. Solebury collected 136 pounds of drugs during the 6-month cycle, Chief Dominick Bellizzie reported. More than half of that was deposited in the Township's permanent collection box. Collections by all Bucks County departments rose from roughly 3.5 to more than 5 tons in the cycle, he said, with a similar ratio of medications surrendered at live events and drop boxes.

Police Urge Caution Around Motorcycles

The return of warm weather also brings the usual increase in the number of motorcycles on Township roads.

To help avoid accidents and injuries, the Solebury Police Dept. urges residents to be cautious when sharing the road with motorcycles—particularly when turning onto Township roads from blind driveways and intersections.

"Motorcycles are sometimes difficult to see and extra caution must be taken," noted Police Chief Dominick Bellizzie.

"Noise is another problem related to motorcycles at this time of year," he said. "The police department will be vigilant and will do everything legally possible to ensure that all motorcycles operated in the Township have proper muffler systems."

Residents who have particular concerns or questions about motorcycles may contact the Solebury Township Police department at 215-297-8201.

Your ad could be here.



609-397-8483

ads.schoolwindow@gmail.com

See Life HOPEWELL & LAMBERTVILLE EYE ASSOCIATES
Get a clear perspective
 Treatment and Management of Eye Diseases & Disorders
 www.seelife.net NJ 4913

Lambertville: Bridge Street & Rt. 29 & 179, NJ 08530 • 609-397-7020
Hopewell: 84 East Broad St. Hopewell, NJ 08525 • 609-466-0055

K. Daniels, OD., FAAO. And Associates
 Academic Faculty At The Penn. College Of Optometry
Book Author: Contact Lens, Refractive Surgery, Dry Eye, & Presbyopia
Difficult Contact Lens Fittings - Laser Vision Co-management
Dry Eye Treatment - Children's Vision - Corneal Reshaping
Surgical Staff Affiliated With Wills Eye Group In Princeton

Majority Of Vision Plans And Medical Insurances Accepted
 Our Offices Are Also Providers For Many Of The Same Vision Plans
 Offered At The Majority Of Retail Eye Centers

CREMATION SHOULD NOT BE OUTSOURCED

Most funeral homes use a third-party contract crematory.
 Varcoe-Thomas assures every step of care for your loved one
 is managed within our private facility.
 If you choose cremation, let our family care for your family.



Residents of Solebury, Caring for Families Since 1879
 Large Off-Street Parking & Modern Facilities
 Specializing in Church Visitations & Memorial Services
 Affordable Cremation & Traditional Services
 Licensed Funeral Director in PA, NJ & NY
 Assisting Families When an Out-of-State Death Occurs
 Savings for Veterans & Spouses



State of the Art Crematory
 Now On Site

Jason "Oz" Oszczakiewicz
 Owner/Supervisor

215-348-8930

344 North Main Street, Doylestown, PA 18901
 www.varcoethomasfuneralhome.com

Township Directory

Emergency? Dial: 9-1-1. Nonemergency? Call: 215-297-5656.

Township Manager Dennis H. Carney:
soleburymanager@soleburytwp.org

Asst. Township Manager/Secretary/Treasurer/Asst. Z.O.
Gretchen Rice: grice@soleburytwp.org

HARB Administrator, Environmental Advisory Council
Secretary Christine Terranova: cterranova@soleburytwp.org

Admin. Asst., LPC Administrator, Planning Commission
Administrator Jean Weiss: jweiss@soleburytwp.org

Parks & Recreation Director Dudley Rice:
soleburyparks@soleburytwp.org

Right-To-Know Officers

Administrative Records: Asst. Twp. Manager Gretchen K. Rice,
soleburymanager@soleburytwp.org

Police Records: Police Chief Dominick Bellizzie,
police@soleburypd.org

Zoning Officer/Building Code Official

Matthew Wojaczyk: mwojaczyk@soleburytwp.org

Supervisor Chair Helen Tai
htai@soleburytwp.org

Sup. Vice-Chair James Searing
jsearing@soleburytwp.org

Supervisor Noel Barrett
nbarrett@soleburytwp.org

Supervisor Paul Cosdon
pcosdon@soleburytwp.org

Supervisor Kevin Morrissey
kmorrissey@soleburytwp.org

Other Inquiries: soleburytownship@soleburytwp.org

P.O. Box 139, Solebury, PA 18963
SoleburyTwp.org

Parks and Recreation Dept.

Upcoming Events



There is still room! July 5 - Aug. 12
Summer Adventure Camp 2016

NH-S Upper Elementary School
180 West Bridge St., New Hope

For more information and to download a registration form,
visit: soleburytwp.org (click Canal Park footbridge at mid-page)
OR stop in at Township Hall during normal business hours.



Come celebrate all that is Solebury!
2nd Annual Solebury Day

Sept. 17, 10AM - 3PM, Laurel Park
Rain date: Sept. 18

parade • pet dress-up contest • cake-baking competition
musical performances • art show • community softball game
dunk tank • face-painting • balloon animals • crafts

To keep abreast of local sports news, visit these websites:

soleburytwp.org (Parks & Recreation tab)
www.soleburybaseball.org (baseball)
www.soleburybasketball.org (basketball)
www.nhsfcc.com (football)
www.soleburylacrosse.com (lacrosse)
www.soleburysoccer.com (soccer)
www.soleburywrestling.com (wrestling)

Advertise your business in the Solebury Messenger



Your ad will reach 5,500 Solebury Township households and businesses by direct mail.

Small (1½"-by-2½")	(see examples, p. 8)	\$115*
Medium (2½"-by-2½")		\$140*
Large (1/8 page)	(see examples, pp. 3-6, 8)	\$165*
X-Large (1/4 page)	(see examples, pp. 2, 6)	\$325*
Special Insert	(see example in this issue)	\$675

***Call to learn what discounts are available with a one-year contract and/or simultaneous insertion.**

Special Offer for New Advertisers:

Advertise with us for the **first time**,
and get our **CONTRACT RATE** with **NO CONTRACT!**

609-397-8483

ads.schoolwindow@gmail.com
facebook.com/schoolwindowpublications



**Solebury
Messenger**

P.O. Box 596, Lambertville, NJ 08530

PRSRT STD
ECRWSS
U.S. Postage PAID
Flemington, NJ
08822
Permit No. 86

CARRIER ROUTE PRESORT

**Township
News Inside!**

SUMMER ADVENTURE CAMP 2016

There is
still room!

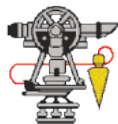
There is
still room!

July 5 - August 12

New Hope-Solebury Upper Elementary School

Registration forms are available at Township Hall and on the Township website.

(See page 7 for details.)



Crews Surveying, LLC
Adam D. Crews, PLS

1806 Deep Run Road
Suite B
Pipersville, PA 18947

Ph: 215-766-2477
Fx: 215-766-2399
A.Crews@CrewsSurveying.com



James Taylor
New Hope's only Erie Agent
Located in Logan Square
taylormadeinsure@aol.com
215-862-2779



*Discount eligibility, rates and coverages vary by state. Life insurance not available in N.Y. 51041. Not all companies are licensed or operate in all states. Not all products are offered in all states. Go to erieinsurance.com for company licensure and territory information.

SOLEBURY CHIROPRACTIC

DR. MICHAEL J. PREDIGER

2996 SUGAN ROAD • BOX 85
SOLEBURY, PENNSYLVANIA
215 297 8444

**HANDS ON HEALTH CARE
FOR THE ENTIRE FAMILY**

July Customer
Special
GO BIG OR GO SMALL!

609-203-5286
mythirtyone.com/374546

thirty-one



PRIVATE TUTORING

One-on-one in your home, focused on learners' individual needs

From Pre-K to College and Adult

- Language Arts (reading and writing)
- English as a Second Language
- Computer skills & study skills



609-397-8685



PLS

6650 Lower York Rd.
New Hope, PA 18938
215-862-5531
Fax: 215-862-5532

Creative Landscape Design & Installation

Custom Outdoor Lighting

Complete Outdoor
Property Maintenance

Certified Hardscape Installation

*Owner Operated
Serving Bucks County for 30 Years*

**Call us now to schedule your
Spring Projects & Maintenance!**

www.PLSBlue.com PA032949

Registered
Master Plumber

- Commercial
- Residential

**Solebury Plumbing
& Heating, Inc.**

P.O. Box 511
Solebury, PA 18963

Phone/Fax: 215-862-4099
soleburyplumbing@comcast.net
Owner: Steve Borrows