

# Solebury Messenger

A bimonthly publication of the Board of Supervisors

Vol. 19, No. 3

SPRING ISSUE

MAY 2013

## Homeowners Respond to Township Survey

More than 1,700 Solebury residents responded to a survey requesting their input on the update of the Township's Comprehensive Plan, which is currently underway. The results will be examined by the Comprehensive Plan Committee as they review how Township policies and strategies can be improved to help achieve a sustainable community.

The survey was mailed to property owners in September and the high response rate exceeds 43 percent. According to the Bucks County Planning Commission, Solebury achieved the highest return rate for a comprehensive plan survey in the county.

The Comprehensive Plan Committee reported being "extremely pleased with the responses received, which show that residents in the Township really care about the community and its future."

Nearly one-half of those who responded to the survey have been residents for more than 15 years, the committee said. The top three reasons respondents provided for living in Solebury are the Township's open space/scenic beauty, its rural setting, and the quality of its schools.

The survey asked residents for input

on planning and development issues that they believe municipal officials should address over the next 10 years (the role of the Comprehensive Plan is to identify these priorities so it can be used to guide Township decision-making).

The top-ranked priorities identified by the survey include retaining the Township's rural character and natural features and preserving agricultural land and open space. Nearly three-quarters of respondents felt that municipal officials should continue to preserve open space and farmland.

In addition, nearly three-quarters of respondents identified the need to protect the quality of the local water supply.

Other issues residents said need to be addressed as Solebury moves forward include traffic and roadway improvements, wildlife management, and enhancement of park and recreational facilities.

The top selection for recreational enhancement was the inclusion of more hiking trails and bikeways and better access and connections among recreational facilities.

Township officials and the Comprehensive Plan Committee are grateful to residents for participating in the survey. 🌻

## Solebury Parks & Recreation Wins State Award

The Pennsylvania Recreation and Park Society (PRPS) presented Solebury Parks and Recreation with its annual Excellence in Programming Award in March, making it the sixth time in eight years that the department has been singled out for recognition of a program or event.

The award was presented—"in recognition of superior performance and distinguished by excellence"—to Director Dudley Rice by Recognition and Awards Committee Chair Carolyn Hanel at the PRPS's annual conference in Hershey.

The tribute recognized two accomplishments of the public/private partnership between Solebury Township and the Solebury Baseball and Softball League: (1) Successfully raising funds to renovate and improve fields and facilities at Laurel Park, and (2) jointly operating and managing a Township-sponsored baseball and softball program that engages the community and enlists volunteers.

A 10-member committee reviewed the Solebury program and compared it to others throughout the state.

The PRPS is recognized as the Commonwealth's professional organization for the promotion of healthy, high quality recreation and park opportunities and has more than 1,800 members statewide. 🌻

Register Now!  
**SUMMER ADVENTURE  
CAMP 2013**

July 1 - August 9  
NH-S Upper Elementary School  
(See page 5.)

**PRPS KEYNOTE  
SPEAKER** Shannon Miller—gymnast and winner of multiple medals in the 1992 and 1996 Olympic Games, including a gold medal in 1996 for the balance beam—chats with Solebury Parks and Recreation Director Dudley Rice at the PRPS awards ceremony in March, where Dudley accepted the organization's Excellence in Programming Award on behalf of Solebury Parks and Recreation.





Dear Taxpayer:

Through the **Solebury Messenger**, the Board of Supervisors gives you, the taxpayer, firsthand information about Township matters. In these pages, you will read about what is being done to preserve and improve the quality of life as you know it, as well as how your hard-earned tax dollars are being spent.

The **Solebury Messenger** is created by Kay Hayes and Marie Collins, of School Window Publications; the newsletter celebrated its 15-year anniversary with the publication of the Nov. 2010 issue.

This bimonthly periodical is primarily ad-sponsored—a method which allows the Township to provide taxpayers with six professional newsletters each year for a fraction of the actual cost. To place an advertisement supporting this periodical, contact Kay at 609-397-8483.

If you live in the Township, but are not currently receiving a copy of the **Solebury Messenger** through the mail, please contact Kay so that she can add your name and address to our mailing list.

Other correspondence should be directed to the appropriate Township official. For more information, see the Township directory on page 7.

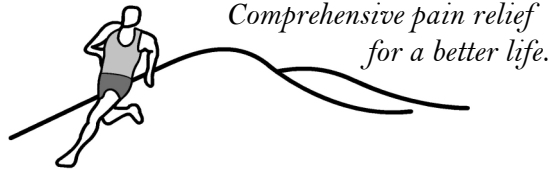
*Kay and Marie*



Printed on recycled paper by Hermitage Press, Trenton, NJ  
© School Window Publications

**A NOTE TO OUR ADVERTISERS**

*Publication of advertisements in the Solebury Messenger does not represent endorsement by the Township or its officers of any products, services, businesses, or ideas mentioned. Also, no political advertisements will be accepted.*



**New Hope Physical Therapy & Sports Rehab**

In a friendly and supportive environment, our goal is to treat your problem, relieve your pain and restore your ability to function. We get you back to work, sports, and a better life.



*Linda, Bill, Kathy, Natalie, Janet*

Orthopedic injury · Back, shoulder or hand problem  
Chronic pain condition · Postsurgical rehabilitation for joint replacement or after a work, auto, or sports injury · Women's health - chronic pelvic pain, incontinence, post-partum physical therapy

Suite #1, Logan Square Center • 215-862-4195

# Township Calendar

*Calendar information is subject to last-minute changes.  
Confirm all dates and times with the Township office.  
All meetings are held at Solebury Township Hall.*

## May

- 5/6 Historical Architectural Review Board, 7 pm
- 5/7 Board of Supervisors, 7 pm
- 5/13 Planning Commission, 7 pm
- 5/14 Environmental Advisory Council, 7 pm
- 5/16 Land Preservation Committee, 7 pm
- 5/23 Board of Supervisors, 7 pm
- 5/23 Parks & Recreation Board, 7 pm
- 5/27 HOLIDAY—TOWNSHIP OFFICES CLOSED

## June

- 6/3 Historical Architectural Review Board, 7 pm
- 6/10 Planning Commission, 7 pm
- 6/11 Environmental Advisory Council, 7 pm
- 6/18 Board of Supervisors, 7 pm
- 6/20 Land Preservation Committee, 7 pm
- 6/27 Parks & Recreation Board, 7 pm



*Stay on top of meeting times with email alerts!*

Visit: [soleburytwp.org](http://soleburytwp.org)  
Click "Solebury Email Alerts"  
and enter your email address.

Copper • Slate • Wood Shingles • Metal Roofing

# Solebury Roofing Contractors, Inc.

- Locally owned and operated
- All work installed by owner
- All work 100% guaranteed
- Fully insured and bonded
- Roofing professionally installed since 1970

**215-534-0284**  
**Soleburyroofing.com**

**2302 Street Road Lahaska, PA**  
**Office and Fax 215-794-7634**

# Solebury Girls Take Basketball Championship

The Solebury Parks and Recreation fifth-grade girls' travel basketball team took the Inter-County Basketball Association Division 2 League Championship in March.

The team executed a stunning win in the title game against Owen J. Roberts, held at the Competitive Edge Sports Complex in King of Prussia, racking up a final score of 27-18.

The Owen J. Roberts team jumped out with a quick 8-0 lead in the first quarter, but Solebury battled back. By halftime, the local girls had a 16-12 lead.

Solebury then proceeded to completely shut down their opponents' strong offense, holding Owen J. Roberts scoreless in the third quarter, which launched the Township team into the fourth quarter with a commanding 20-12 lead.

Owen J. Roberts mounted a final surge, but it was no match for the quick-scoring Solebury team. Solebury matched the team basket for basket, ending the game 27-18.

Parents and supporters erupted with cheers at the final whistle and piled onto the court.

Many of Solebury's 10-year old girls played last season on teams that didn't win a single game!

That all changed under the guidance of Head Coach Ed McDonnell and assistant coaches Tony Vlahovic and Jenny Jones, who led the team through a 13-2 season. 🏆



**THE CHAMPIONS:** Solebury's championship-winning fifth-grade girls' travel team consists of (front, l. to r.) Maggie Devito, Katie McDonnell, Sabrina Vlahovic, Anna Paz, (middle, l. to r.) Danielle Herbert, Caroline Thistlewaite, Maxima Molgat, Katie Costello, Rylee Bordwick, and Logan Amberson, plus (back, l. to r.) Assistant Coach Jones, Head Coach McDonnell, Assistant Coach Vlahovic.



Residents of Solebury Township  
Caring for Families Since 1879

Large Off-Street Parking & Modern Facilities  
Specializing in Church Visitations & Memorial Services  
Affordable Cremation & Traditional Services  
Licensed Funeral Director in PA, NJ & NY  
Assisting Families When an Out-of-State Death Occurs  
Savings for Veterans & Spouses

**Jason "Oz" Oszczakiewicz**  
Owner/Supervisor

[www.varcoethomasfuneralhome.com](http://www.varcoethomasfuneralhome.com)

**(215) 348-8930**

344 North Main St., Doylestown, PA 18901



**THE NUMBER OF CLASSES WE OFFER  
EVERY. SINGLE. WEEK.**

**DID WE MENTION THEY'RE FREE WITH MEMBERSHIP?**

You're only one workout away from a good mood.

The **CORNERSTONE** Clubs

doylestown | new hope | warrington

visit [www.cornerstoneclubs.com](http://www.cornerstoneclubs.com) for a free guest pass

## Sale of Note Cards Supports Land Preservation

Purchasing a box of Solebury's unique note cards—featuring scenes of preserved Solebury properties, as seen by Lambertville photographer Mark Ludak—helps raise money for land preservation.

To view a slideshow of the four scenes depicted on the cards, go to [SoleburyTwp.org](http://SoleburyTwp.org), click the Sustainable Solebury tab, then click the "Note Cards" link in the menu at left.

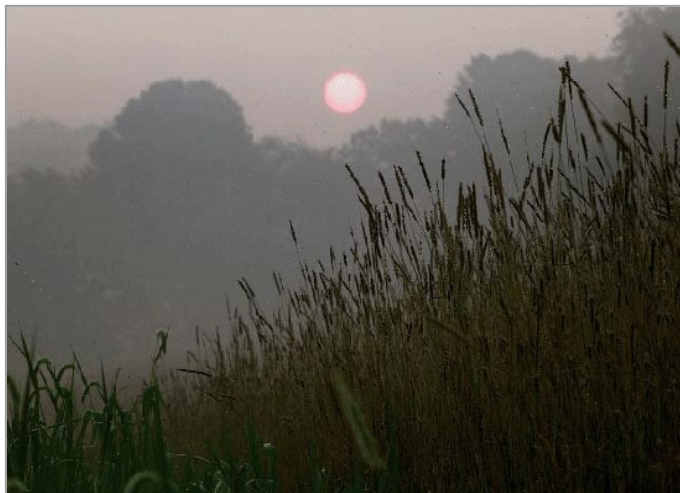
Each box includes eight cards—two each of four photographs—and costs \$8. Two boxes cost \$15.

All proceeds from the sale of note cards benefit the Land Preservation Fund; they are available at Township Hall during regular business hours.

### About the Photographer

Lambertville photographer Mark Ludak's work is on display in the Township Building, has been exhibited in area galleries, and is featured in area publications.

For more information, visit: [www.markludak.com](http://www.markludak.com)



## Sale of House Plaques Supports Historical Society

The purchase of commemorative house plaques customized with either a street address or a document-based year of origin supports the efforts of the Solebury Historical Society.

Not sure when your home was built? The society has date-related information about many of the homes erected in the Township before 1900.

To learn more, contact the Plaque Committee:

### Mail:

Solebury Township Historical Society  
Drawer 525, Solebury, PA 18939

### Email:

[soleburyhistory@comcast.net](mailto:soleburyhistory@comcast.net)

### Phone:

215-862-2892

Be sure to include your tax parcel number in your correspondence, as well as the best way to contact you to discuss details.



### The Board of Supervisors made the following appointments to advisory committees in March:

- Environmental Advisory Council: James Bishop and Eric Kaufmann (voting members), Diane Smith (alternate, nonvoting member)
- Historical Architectural Review Board: James Trammell
- Planning Commission: Diane Sarti



### Planning an Addition or Renovation?

Be smart: Talk to the Township first. We can help you navigate the Township's forms, approval process, codes, and zoning regulations. Getting it right the first time could save you time and money.

## THE PIDCOCK AGENCY



### INSURANCE

315 West Bridge St. • P.O. Box 9  
New Hope, PA 18938-0009

(215) 862-2001

*Serving the  
community  
since 1931*

*Independent insurance agents representing*

**HARLEYSVILLE • WESTFIELD TRAVELERS  
OHIO CASUALTY • GMAC**

**FLOOD • MOTORCYCLE • SPECIALTIES  
Access to CHUBB and FIREMANS FUND**

*Call Frank Cosner Jr. or Patty Cosner*

## slatterycompany.com

## LANDSCAPE CONTRACTORS

Landscape Masonry & Fine Gardens

## SLATTERY & COMPANY

215 630 1752

*Solebury Resident*



## Solebury Parks & Recreation 2013 Summer Adventure Camp *Registration Now Open*

Registration is now in progress for Solebury Parks and Recreation's six-week 2013 Summer Adventure Camp, which will be held at New Hope-Solebury Upper Elementary School in New Hope.

The day camp starts at 9 AM on July 1 and ends at 3 PM on August 9. Camp size is limited and spaces fill very quickly.

Parents can register children for any number of weeks, and discounts are available to anyone who signs up before June 1.

Forms and information are now available for downloading from the Township website (go to [www.soleburytp.org](http://www.soleburytp.org), click the Parks and Recreation tab, then click Documents & Forms).

This year's camp adventures will include science workshops and shows by Mad Science, magic shows, karate instruction, arts and crafts, and special events and activities that vary from week to week.

Returning for the second year is a fitness and obstacle course featuring unique tunnels and crawl-through tubes.

In addition, many outdoor fitness and sports activities are held each week.

Indoor basketball, floor hockey, and quick start tennis programs are held in the school gymnasium.

Our camp is a Pennsylvania Recreation and Park Society award winner for excellence in programming, as well as for its focus on health, fitness, and wellness.

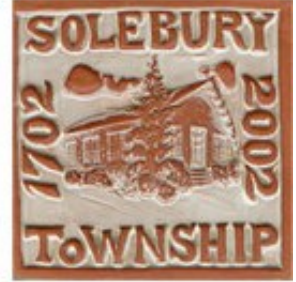
## Sale of Tiles and License Plates Supports Parks & Recreation Programs

Consider supporting Solebury Parks and Recreation programs by purchasing commemorative, limited-edition, red clay tiles or a Township license plate for yourself or as gifts.

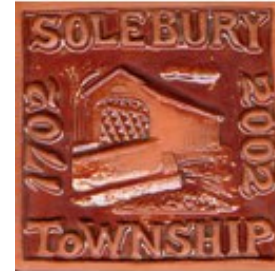
Designed by local artist Erika Bonner, four different tiles featuring Solebury landmarks celebrate the Township's 300th anniversary; they are priced at \$25 each.

The Township's special edition, multi-color front license plate features the historic Columbus Oak, with Bowman's Tower in the background; they are priced at \$20.00 each.

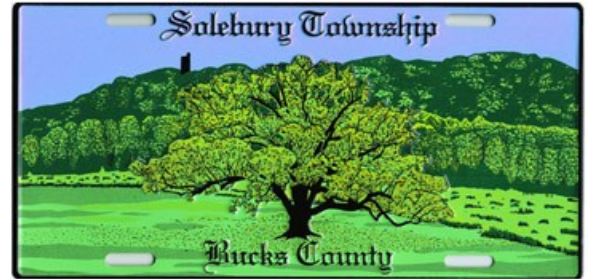
All proceeds from the sale of tiles and license plates benefit Parks and Recreation programs; they are available at Township Hall during regular business hours.



Series 1 & 2: The historic Columbus Oak, Solebury Village Stone School House



Series 3 & 4: Van Sant Covered Bridge, scenic Delaware Canal Bridge



Solebury United Methodist  
CHILDREN'S LEARNING CENTER

### Openings Still Available Pre-Kindergarten Classes

A Christian-Based Pre-School Offering

**Pre-Kindergarten**  
for Children 3 to 4 years of Age

**Pre-Kindergarten Plus Program**  
for 5 year olds not ready for full-day Kindergarten

**Early 3's Program**

**Afternoon Enrichment Program Available**

2536A Aquetong Road, New Hope, PA 18938  
215.862.2917 • [www.soleburyumc.org](http://www.soleburyumc.org)

See Life HOPEWELL & LAMBERTVILLE EYE ASSOCIATES  
*Get a clear perspective* NJ 4913

Treatment and Management of  
Eye Diseases & Disorders

[www.seelife.net](http://www.seelife.net)

Lambertville • 609-397-7020  
Rt. 29 & 179 at Bridge St., Lambertville, NJ 08530

Hopewell • 609-466-0055  
84 East Broad St., Hopewell, NJ 08525

**K. DANIELS, OD FAO AND ASSOCIATES**  
Academic Faculty at the Penn. College of Optometry

Book Author:  
Contact Lens, Refractive Surgery, Dry Eye & Presbyopia

Difficult Contact Lens Fittings  
Laser Vision Co-Management  
Dry Eye Treatment  
Children's Vision • Corneal Reshaping

Surgical Staff Affiliated with Wills Eye Group in Princeton

Majority of Vision Plans and Medical Insurances Accepted  
Our offices are also providers for many of the same vision plans offered at the majority of retail eye centers.

## ALL SEASONS LANDSCAPING

Est. 1977

Landscape Design & Planting  
Hardscape Installation

Quality Service at Reasonable Rates  
Mark Werkheiser, B.S. Ornamental Horticulture  
**215-345-4289**

**A COMPLETE JOB FROM CONSULTATION TO CLEANUP**

- Spring & Summer Cleanup
- Edging, Pruning, Mulching
- Landscape Renovations

"References Gladly Furnished"  
I look forward to hearing from you.  
Call now for a free estimate!

No Job Too Small

## Get the Notifications You Need, the Way You Need Them

**Q.** Do you want to be notified about serious regional weather emergencies only?

**A.** Visit **ReadyNotifyPA.org** and click Bucks County. Choose an option in the left-hand menu, or use the "Click Here to Register" button to sign up. Specify only the contact information by which you want to be notified. On the next page, check only the **Weather Warnings** option. Record your username and password. You can change your options anytime by logging in.

**Q.** Are there other regional issues you would like to be notified about?

**A.** **ReadyNotifyPA.org** presents a range of other regional notification options you can explore (e.g., crime alerts, road closings, school emergencies, Amber Alerts, and more). You will only be notified about the options you select via the means you specify, and you can change your options at any time.

**Q.** Would you also like to be notified about Township-specific matters?

**A.** **Solebury Email Alerts** may be for you. The Township uses email alerts to announce changes in meeting times and locations, new articles posted on the Township website, Police Dept. warnings, and more. To sign up, visit [www.soleburytwp.org](http://www.soleburytwp.org), click the News tab, then click the words "Email Alerts." Enter your email address to subscribe. You can unsubscribe at any time.

## County Household Hazardous Waste & Computer/Electronics Collection Programs

### All-in-One Events: Household Hazardous Waste Collection and Computer/Electronics Recycling

**June 1:** Upper Bucks County Area Vo-Tech School  
3115 Ridge Road  
Bedminster Township

**July 27:** Central Bucks South High School  
1100 Folly Road  
Warrington Township

**August 24:** Bucks County Technical High School  
610 Wistar Road  
Bristol Township

**September 14:** Quakertown Community High School  
600 Park Avenue  
Quakertown Borough

### eWaste-Only Events: Computer/Electronics Recycling

**September 28:** Lower Makefield Corporate Center  
770 Township Line Road  
Lower Makefield Township

These collection/recycling events are not open to business, industry, or institutions.

Each event is held, rain or shine, from 9 AM-3 PM.

Learn what you can and cannot bring:

- [www.buckscounty.org/recycling](http://www.buckscounty.org/recycling)
- PA DEP Recycling Hotline: 1-800-346-4242
- Bucks Co. Planning Commission: 1-215-345-3400



## Do You Have an Idea You Would Like to Offer to the Township?

Solebury Township welcomes suggestions from residents. Visit our website and click on the Suggestion Box photo. Your e-mail address is required.



INTIMATE EVENTS

*River View  
from Every Room*

3690 RIVER ROAD, LUMBERVILLE  
215-297-5661  
[WWW.1740HOUSE.COM](http://WWW.1740HOUSE.COM)  
[INNKEEPER@1740HOUSE.COM](mailto:INNKEEPER@1740HOUSE.COM)



## Bowman's Hill

WILDFLOWER PRESERVE

Where Mind, Heart and Spirit Bloom

Save the Dates!

## Spring Native Plant Sale

May 11 (11 am) thru June 2 (4 pm)

Member's Preview Sale: May 10, 2-7 pm and May 11, 9-11 am

Located 2.5 miles south of New Hope, PA  
1635 River Road • 215-862-2924 • [www.bhwp.org](http://www.bhwp.org)

# Township Directory

P.O. Box 139, Solebury, PA 18963  
soleburytwp.org

In an emergency, please dial: 9-1-1.  
For other matters, call: 215-297-5656

The following individuals can be reached by email:

**Township Manager Dennis H. Carney:**  
soleburymanager@soleburytwp.org

**Asst. Township Manager/Secretary/Treasurer/Zoning Officer  
Gretchen Rice:** grice@soleburytwp.org

**HARB Administrator, Environmental Advisory Council Secretary  
Christine Terranova:** ctterranova@soleburytwp.org

**Admin. Asst., LPC Administrator, Planning Commission  
Administrator Jean Weiss:** jweiss@soleburytwp.org

**Parks & Recreation Director Dudley Rice:**  
soleburyparks@soleburytwp.org

**Right-To-Know Officer, Administrative Records**  
Asst. Twp. Manager Gretchen K. Rice  
soleburymanager@soleburytwp.org

**Right-To-Know Officer, Police Records**  
Police Chief Dominick Bellizzie  
police@soleburypd.org

Unsure where to direct your question?  
Email: soleburytownship@soleburytwp.org  
You can direct your query to a specific individual  
or write a general query.  
The appropriate individual will respond.

# Parks and Recreation Dept.

## Upcoming Events



### Summer Adventure Camp 2013

July 1 - August 9

NH-S Upper Elementary School,  
180 West Bridge St., New Hope

For more information and registration form, visit:  
<http://www.soleburytwp.org> (Parks & Recreation tab)



Learn more about the Township's Parks & Recreation programs,  
visit: [soleburytwp.org](http://soleburytwp.org). Then click Parks & Recreation.

To keep abreast of local sports news, visit these websites:

- [www.soleburytwp.org](http://www.soleburytwp.org) (Parks & Recreation tab)
- [www.soleburybaseball.org](http://www.soleburybaseball.org) (baseball)
- [www.soleburybasketball.org](http://www.soleburybasketball.org) (basketball)
- [www.tcteams.com/nhspopwarner](http://www.tcteams.com/nhspopwarner) (football)
- [www.tcteams.com/solebury](http://www.tcteams.com/solebury) (soccer)
- [www.soleburywrestling.com](http://www.soleburywrestling.com) (wrestling)

## Advertise your business in the Solebury Messenger



Your ad will reach 5,500 Solebury Township  
households and businesses by direct mail.

Contact us for rates and  
to learn what discounts are available!

**609-397-8483**

[ads.schoolwindow@gmail.com](mailto:ads.schoolwindow@gmail.com)

## 2013 Pidcock Creek Watershed Association Events

- |       |                                  |
|-------|----------------------------------|
| 5/14  | PCWA Board Meeting               |
| 7/9   | PCWA Board Meeting               |
| 9/10  | PCWA Board Meeting               |
| 10/10 | Fall Community Potluck Gathering |
| 11/12 | PCWA Board Meeting               |

Confirm dates with Jan Ubel at  
[janubel@comcast.net](mailto:janubel@comcast.net) or 215-598-7602.  
For more information visit: [www.pidcockcreekwa.com](http://www.pidcockcreekwa.com)

## FULL SERVICE WEDDING VENUE

*That Only  
Feels Far Away*

6987 UPPER YORK ROAD, NEW HOPE  
**215-862-3136**

[WWW.HOLLYHEDGE.COM](http://WWW.HOLLYHEDGE.COM)  
[EVENTS@HOLLYHEDGE.COM](mailto:EVENTS@HOLLYHEDGE.COM)



**Danielle J. Ives, AAMS®**  
Associate Vice President - Investments  
2005 S Easton Rd  
Doylestown, PA 18901  
215-340-6343  
[www.wellsfargoadvisors/danielle.ives](http://www.wellsfargoadvisors/danielle.ives)



## Markets fluctuate. Relationships shouldn't.

Investment and Insurance Products: ► NOT FDIC Insured ► NO Bank Guarantee ► MAY Lose Value

Wells Fargo Advisors is the trade name used by two separate registered broker-dealers: Wells Fargo Advisors, LLC and Wells Fargo Advisors Financial Network, LLC, Members SIPC, non bank affiliates of Wells Fargo & Company.  
©2010 Wells Fargo Advisors, LLC. All rights reserved. 0512-3417 (74029-v3) A1015



**Solebury  
Messenger**

P.O. Box 596, Lambertville, NJ 08530

PRSR STD  
ECRWSS  
U.S. Postage PAID  
Flemington, NJ  
08822  
Permit No. 86

CARRIER ROUTE PRESORT  
POSTAL CUSTOMER

**Township  
News Inside!**



## SUMMER ADVENTURE CAMP 2013

July 1 - August 9, NH-S Upper Elementary School

Registration forms are available at Township Hall and on the Township website.  
(See page 5.)

<b>THC</b>	THOMAS H. CREWS, INC. PROFESSIONAL LAND SURVEYOR
	www.CrewsSurveying.com
PA & NJ	
Property Surveys • Site Plans • Subdivisions Stormwater • Land Development • Grading	
<b>Thomas H. Crews, PLS</b> THC_ThomasHCrews@comcast.net	
215-766-2477	Fax 215-766-2399

**Trinity Day School**  
6587 Upper York Rd., Solebury, Pa.  
**215-297-5510**  
cbove@trinitysolebury.org  
www.trinitysolebury.org/tds

**JOIN US AT OUR OPEN HOUSE**  
**MAY 22 & 23**  
**9-11 AM**

Pre-K for 4's and young 5's  
Pre-School Classes for 3's  
Toddler-Grow for 2½ year olds

- Dedicated to the social & emotional development of the young child
- Small class sizes & gentle atmosphere for learning
- Long-standing, experienced staff
- Faith-based principles support a home-like environment
- Extended full-day program available

### SOLEBURY CHIROPRACTIC

**DR. MICHAEL J. PREDIGER**

2996 SUGAN ROAD • BOX 85  
SOLEBURY, PENNSYLVANIA  
215 297 8444

**HANDS ON HEALTH CARE  
FOR THE ENTIRE FAMILY**

*COUPON*	
<b>15% OFF PACK AND SHIP</b>	<b>The UPS Store®</b>
<b>100% GUARANTEE WHEN WE PACK FOR YOU</b>	Logan Square New Hope, PA 215-862-3600 & Buckingham Green Buckingham, PA 215-794-1199
No expiration. Cannot be combined with other offers.	

### **PRESTIGE** Heating & Cooling

**Solebury, PA**

- ♦ Free estimates on new installations
- ♦ Seasonal tune-ups
- ♦ Maintenance Agreements
- ♦ Service on all makes & models
- ♦ Water heaters, humidifiers
- ♦ Emergency service available

**215-297-0811**

*Family owned and operated.*

**ANTIQUES CENTER AT  
THE PEOPLE'S STORE**  
28 N. UNION STREET | LAMBERTVILLE, NJ 08530

**EXPLORE & DISCOVER**

Antiques, furnishings, lighting, art, collectibles, vintage clothing, industrial, and shabby chic from 40 dealers on three floors.  
10AM - 6PM 7 days. Under New Ownership.  
New dealers welcome, consignment too.

www.PeoplesStore.net      908-397-9808

**PLS**

6650 Lower York Rd.  
New Hope, PA 18938  
**215-862-5531**  
Fax: 215-862-5532

**Creative Landscape Design & Installation**  
Outdoor Lighting  
♦  
Complete Outdoor  
Property Maintenance  
♦  
Certified Hardscape Installation  
Outdoor Kitchens, Pool Houses

*Owner Operated*  
*Serving Bucks County for 28 Years*

**Now Scheduling**  
Spring Clean-Up & Landscape Installation  
www.PLSBlue.com PA032949