



# Solebury Messenger

A Quarterly Publication of Solebury Township

Vol. 29, No. 2

Summer Issue

July 2023

## Solebury Township Contracts With EAM Associates to Conduct Energy Audit

In order to promote energy conservation and reduce greenhouse gas emissions, the Township has contracted EAM Associates, Inc. to conduct an energy audit of the municipal building complex.

## Solebury Wins Electric Vehicle Grant

The Township was recently awarded a \$7,500 Alternative Fuels Incentive Grant from the PA Department of Environmental Protection. The grant will cover the cost difference of an electric vehicle over a standard gasoline-fueled vehicle.

This will allow the Township to replace the older vehicle used by Solebury administrative staff with an electric unit, at the same cost as a gas-powered replacement.

In addition to contributing zero tailpipe emissions, it is anticipated that this electric vehicle will save nearly 300 gallons of fuel each year.

This will be the first fully-electric vehicle in Solebury's fleet. The Township also has six hybrid police patrol vehicles, with two additional hybrid vehicles expected to be delivered in 2023; then all of our patrol cars will consist of hybrid vehicles.

The purpose of this audit is to identify areas of deficiency in the buildings' insulation or HVAC systems that cause unnecessary energy expenditure. EAM's team arrived the morning of May 19 to conduct the first round of assessment using a blower-

door test and infrared (IR) imaging.

By closing all exterior windows and doors, and using a specialized door cover and fan-attachment, the blower-door test made it possible to observe where and how much

*Continued on page 2...*

## PennDOT Staff Meet With Solebury Officials To Discuss Road Maintenance Issues

Solebury officials recently sat down with PennDOT's District 6 maintenance staff to discuss current and upcoming road maintenance issues throughout the Township. The meeting was organized by state Sen. Steve Santarsiero, staff member Shannon Sticker, state Rep. Tim Brennan and his Chief of Staff Carol Spiewak, who are a great help coordinating with state agencies.



PennDOT will be focusing on Sugan, Aquetong, Green Hill, Mechanicsville and River Roads through the remainder of the 2023 construction season and in 2024 with various methods of base, surface and ditch repairs. PennDOT also introduced service agreement opportunities which would allow the Township to potentially respond to urgent matters and get reimbursed by the Department.

### What's in Your Inbox?

Meeting agendas, police alerts, weather bulletins and more are available by email. Visit [SoleburyTwp.org](http://SoleburyTwp.org) and click "Email Notices."

# Energy Audit of Solebury Municipal Buildings Under Way

...continued from page 1

air was escaping (or entering) the buildings. After the blower-door test had adequate time to run, EAM staff toured the buildings and snapped photos using an IR camera. The IR camera made it possible to see where air was escaping or entering



the building by showing areas that were unusually cool or warm, as well as spots in walls and ceilings where proper insulation may be lacking.

EAM plans to return to Solebury periodically until their team has collected enough data to form a full energy audit report. By using this data and

expert insight, the Township will begin making plans to improve the energy efficiency of the municipal complex buildings and systems.



The blower-door test apparatus is fitted to one of the exterior doors in the Township Building (left). An infrared camera is used to detect any energy leaks around windows and doors (above).

## Land Preservation Committee Welcomes Four New Volunteer Members

Springtime brought new members to the Land Preservation Committee. Solebury's nationally-recognized Land Preservation Program has always been a unique "neighbor working with neighbor to save our community" initiative.

Chris Howard has lived in Solebury Township for 20 years. An avid runner, he cherishes the Township's preserved open spaces and is motivated to help conserve the natural resources and rural character that make Solebury a special place. Chris has 25 years experience in commercial healthcare, including strategic valuation, contract negotiation and commercial leadership.

Joseph Tartaglia and his wife, Nicole, moved to Solebury in 2016. Originally attracted to the school system for their two children, they also valued the open landscapes, working farms and bucolic setting. New neighbors explained that

many of the beautiful properties were preserved in perpetuity through the Solebury Township Land Preservation Program. Joseph truly values the character of Solebury and is looking forward to continuing the efforts of past committee members to preserve more land for future generations.

The committee also welcomed Michael Miernicki

and Jacob Genovay as new members working to preserve our natural heritage.

If you are interested in learning more about the Land Preservation effort, please contact Jean Weiss, Administrator, at 215-297-5656. You can also learn more about the program on the Solebury Township website [www.soleburytwp.org](http://www.soleburytwp.org).







# It's Hurricane Season!

## Be Prepared for Stormy Weather

### What to do before the storm...

- ☁ Fill your car with gas (and fill an appropriately sized gas can if using a generator).
- ☁ Withdraw cash in case ATMs are not working after the storm.
- ☁ Fill any prescriptions you may need if you are running low.
- ☁ Plug in a standard non-cordless phone to receive and make emergency calls. Charge your cellphone, smart phone, and/or tablet and locate your car chargers.
- ☁ Place flashlights or battery-operated lanterns, plus fresh batteries, on each floor of your home.
- ☁ Store water for cooking and cleaning. Fill bathtubs with water for flushing.
- ☁ Set up a battery-powered clock and radio.
- ☁ Locate your supply of bottled water and easy-to-prepare, non-perishable foods, including pet food.
- ☁ Protect sensitive electronic appliances, like microwave ovens, TVs, and computers with surge suppressors, which can prevent damage from surges related to lightning, fallen poles, and other accidents. Alternatively, unplug them before a storm.
- ☁ Freeze and refrigerate bottles of water to occupy more space. (A partially full freezer can keep meat frozen for up to 24 hours - completely full, up to 48 hours.)
- ☁ Place your "go" bags and pet supplies in the car, and pet carriers near the door.
- ☁ If you plan to use a generator, set it up outside, close windows to prevent exhaust entering your home, and test any battery-operated CO detectors you installed.
- ☁ Secure lawn furniture, trash cans, and other light objects in case of high winds.

### During the storm...

- ☁ Avoid using candles but if you do, never leave them unattended.
- ☁ Check the fuse or circuit breaker box to see if a fuse tripped inside the home.
- ☁ Check with the neighbors to see if their power is out, too.
- ☁ If you see downed lines and the ground is wet or has standing water, do not go outside. Keep children and pets away from the area.
- ☁ Call PECO at the number below and report the outage through their automated, interactive system. Outages can also be reported online. Ask to speak with a PECO customer service representative to report downed poles or wires, but don't approach or look for these. Energized power lines are extremely dangerous.
- ☁ Stay away from windows, where flying debris can cause injury.
- ☁ Do not use a landline phone or run water during lightning storms.
- ☁ Turn off and unplug appliances - including your furnace, water heater, and water pump - to prevent an electrical overload when power is restored, but keep a couple of lights turned on so you'll know when service is back.
- ☁ Keep refrigerator and freezer doors closed as much as possible. Move meats, cheese, milk, and other perishables into the freezer compartment where it will stay colder longer.

### Storm Outage Contacts

**PECO** 1-800-841-4141 or [www.peco.com/Outages/CheckOutageStatus/Pages/OutageMap.aspx](http://www.peco.com/Outages/CheckOutageStatus/Pages/OutageMap.aspx)

**Verizon** 1-800-837-4966 or [www.verizon.com/support/residential/service-outage](http://www.verizon.com/support/residential/service-outage)

**XFINITY** (Comcast) 1-800-934-6489 or [www.xfinity.com/support/status](http://www.xfinity.com/support/status)



# Generator Safety Tips

Many residents who lose power turn to portable emergency generators to ensure a continuous flow of electricity to refrigerators, freezers, lights, fans, and other appliances.

While generators are convenient, Solebury urges residents to exercise extreme caution when using them, as they can create hazards for homeowners and electric utility workers.

⚠️ **Use outdoors only:** Never use generators indoors or in attached garages - you run the risk of carbon monoxide (CO) poisoning. Only operate outdoors in well-ventilated, dry areas, away from air intakes to the home.

⚠️ **Don't overload it:** Always operate generators in accordance with the manufacturer's guidelines and instructions. Do not operate more appliances and equipment than the output rating of the generator permits.

⚠️ **Avoid shocks & electrocution:** Plug individual appliances into the generator using heavy-duty, outdoor-rated cords with a wire gauge adequate for the appliance load. Wait for rain to stop before using a generator in an open area, or protect it with an open, canopy-like structure to keep it dry while in use. Dry your hands before touching the generator.

⚠️ **Prevent fires & burns:** Allow at least 5 feet of clearance on all sides of the generator. Let it cool at least 2 minutes before removing the fuel cap. If gas spills while fueling, let it evaporate before restarting. Always use fresh gas in your generator, and store gas only in containers approved for that purpose.

⚠️ **Prevent back-feeding:** Never try to power your house by plugging a generator into an ordinary wall outlet, a practice known as back-feeding (powering a house requires a whole-house transfer switch that works with your home circuit breaker). This feeds power back into the utility system and energizes the transformer serving the house, which can pose a serious threat to line, service, and tree crews working to restore power in the area, who may not know the line is energized.

⚠️ **Shut it down safely.** Turn off all equipment powered by the generator before shutting it down. If you don't plan to use the generator again within 30 days, add fuel stabilizer to the gas tank. Do not store the generator or gas indoors.



For important, life-saving information please visit  
<http://tadd.weather.gov>



National Weather Service



U.S. Department of Transportation  
Federal Highway Administration



American Association of Motor Vehicle Administrators



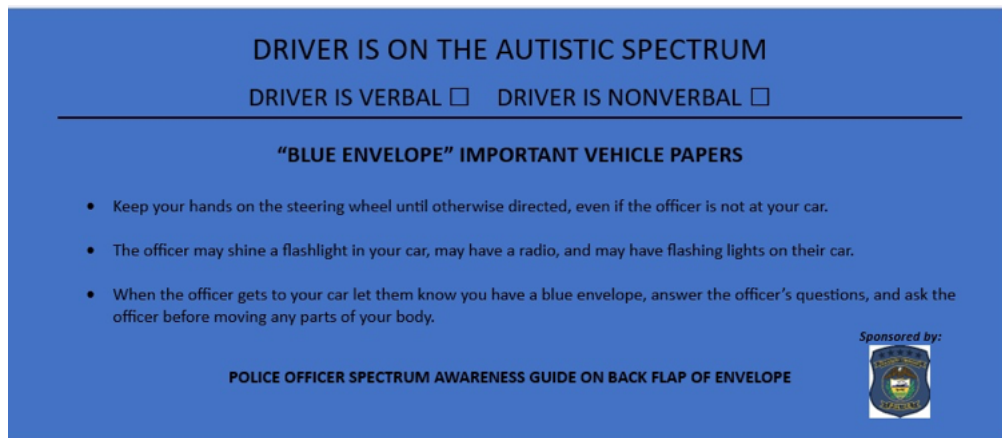


# Solebury Township Police Initiate Blue Envelope Program

The Solebury Township Police Department is implementing the Blue Envelope for individual drivers who have Autism Spectrum Disorder (ASD).

The purpose of the Blue Envelope Program is to improve the interaction between a driver with ASD and a police officer on a traffic stop. The envelopes will contain the driver's insurance card, registration, and driver license, so they can hand it to the officer during a traffic stop.

The primary goal of the Blue Envelope is to assist drivers with ASD with document organization and to

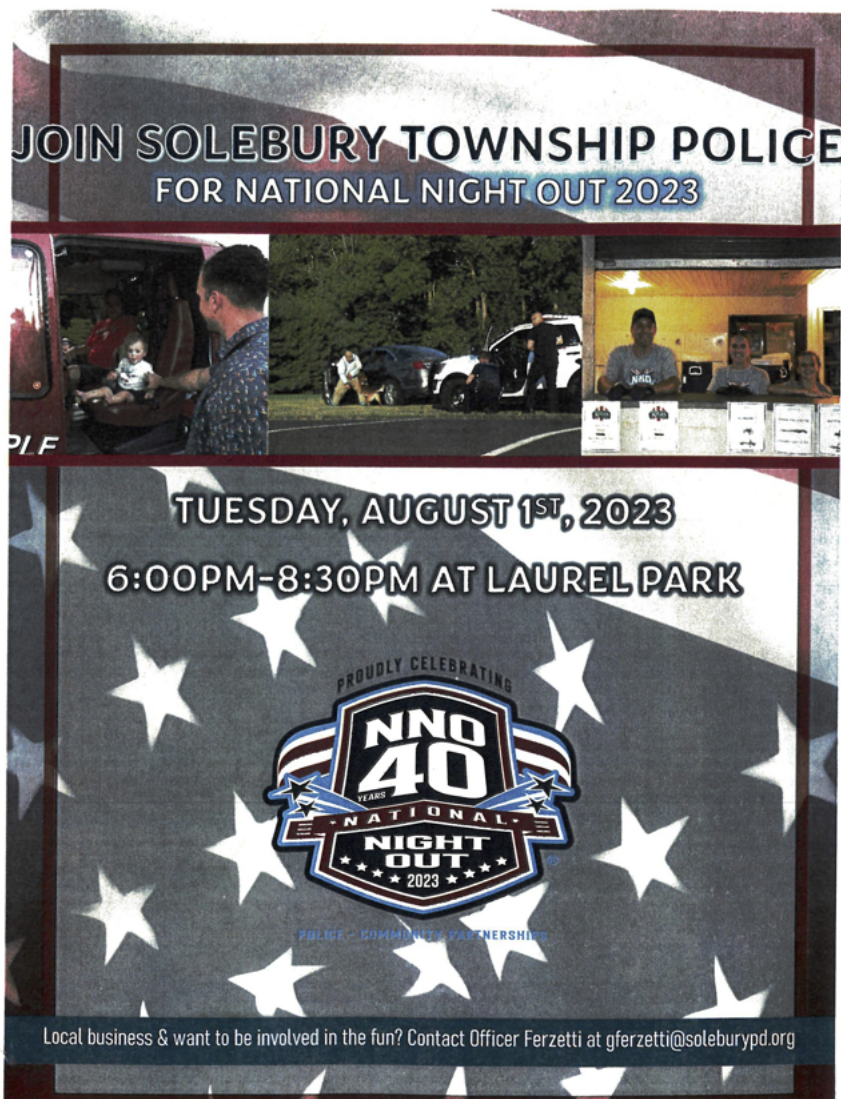


A sample front cover of the envelope used in the Blue Envelope Program.

help them understand what to do at a motor vehicle stop. Secondly, the Blue Envelope provides police officers with the means to quickly identify an operator of a motor vehicle who has ASD and helps guide police officers with the

interaction.

The Blue Envelopes are available for pick-up at Solebury Township Police Department (3092 Sugan Road, Solebury, PA) Monday through Thursday from 7 a.m. to 5 p.m.



## STPD Reboots D.A.R.E Program

This school year, Solebury Township Police reintroduced D.A.R.E.—Drug Abuse Resistance Education—to the students in the New Hope-Solebury School District.

After attending a vigorous two-week training program hosted by D.A.R.E. America, Officer Gina Ferzetti visited the students in second grade during their Health class to teach them about when and how to call 911, stranger danger, safety in and outside of the home, and other age-appropriate topics.

Officer Ferzetti plans to return to the schools next year to teach second and fifth grades.



# RAPID CREDENTIAL ATTAINMENT PROGRAM

COMPLETE YOUR CERTIFICATE OR DEGREE IN ONE YEAR  
AND FIND EMPLOYMENT IN YOUR FIELD OF STUDY

**FREE**



## BENEFITS

- Access tuition assistance, mentorship, tutorial services, and technology resources.
- Get connected with in-demand careers in Business, Education, Healthcare, and Information Technology, and more.
- Meet with a dedicated Career Development Specialist to assist you in completing your education.
- Wide range of resources and a highly trained staff ready to assist with job placement and employment in your field of study.



## ELIGIBILITY

- Are a resident of Pennsylvania.
- Are a former postsecondary student who exited a postsecondary training between 2021 and 2023 without obtaining a certificate, associate degree, or bachelor's degree.
- Had a 2.0 GPA (or higher) upon exit.
- Can finish your formal training program to complete a certificate, associate degree, or bachelor's degree by June 30, 2024.



## PARTICIPATION

- Attend a postsecondary institution located in Pennsylvania, either in person or online.
- Meet the postsecondary institution's established program admission requirements.
- Are committed to completing your certificate, diploma, associate, or bachelor's degree by June 30, 2024.
- Are interested and able to pursue employment with the intention of becoming employed within 12 months of education program completion if currently unemployed or dislocated from employment or are employed if your current employment is not within your training interest area.

Pennsylvania  
**CareerLink**<sup>SM</sup>  
Bucks County

A proud partner of the AmericanJobCenter network

For full details and eligibility criteria or to get started,  
call 267-580-3501, TTY relay dial 711, or email  
[info@buckscareerlink.org](mailto:info@buckscareerlink.org).



# Bucks County Household Waste Recycling Events for 2023

There are two remaining household hazardous waste recycling events scheduled for this year in Bucks County.

Pesticides, paints, weed killer—toxic chemicals are found in many household products, and when they are no longer needed they need to be disposed of safely. Every year the county sponsors recycling events for residents to responsibly discard these hazardous materials.

## August 12, 2023

Lower Bucks  
Bucks County Technical High School  
610 Wistar Road  
Fairless Hills  
Bristol Township

## October 28, 2023

Upper Bucks  
Strayer Middle School  
1200 Ronald Reagan Drive  
Quakertown  
Richland Township

Please note that no electronics, including televisions and computers, can be accepted under state law. Visit [buckscounty.gov/recycling](https://buckscounty.gov/recycling) to discover eCycling options.

This program is available to Bucks County residents only; no material will be accepted from businesses, industry or institutions.

### Township Directory

#### Police:

Emergency? Dial: 9-1-1. Nonemergency? Call: 215-297-8201.  
General Inquiries: [Police2@soleburytpd.org](mailto:Police2@soleburytpd.org)

#### Administration:

Township Number: 215-297-5656  
General Inquiries: [soleburytownship@soleburytpw.org](mailto:soleburytownship@soleburytpw.org)

**Township Manager Christopher Garges:**  
[soleburymanager@soleburytpw.org](mailto:soleburymanager@soleburytpw.org)

**EAC Administrator Debra McFadden:**  
[dmcfadden@soleburytpw.org](mailto:dmcfadden@soleburytpw.org)

**HARB Administrator Zachary Zubris:**  
[zzubris@soleburytpw.org](mailto:zzubris@soleburytpw.org)

**LPC Administrator, Planning Commission Administrator**  
**Jean Weiss:** [jweiss@soleburytpw.org](mailto:jweiss@soleburytpw.org)

**Parks & Recreation Director Dudley Rice:**  
[soleburyparks@soleburytpw.org](mailto:soleburyparks@soleburytpw.org)

#### Right-To-Know Officers

Administrative Records: Jean Weiss,  
[soleburymanager@soleburytpw.org](mailto:soleburymanager@soleburytpw.org)  
Police Records: Police Chief Dominick Bellizzie,  
[police@soleburytpd.org](mailto:police@soleburytpd.org)

### Board of Supervisors

<b>Chair Mark Baum Baicker</b> <a href="mailto:mbaumbaicker@soleburytpw.org">mbaumbaicker@soleburytpw.org</a>	<b>Vice-Chair Hanna Howe</b> <a href="mailto:hhowe@soleburytpw.org">hhowe@soleburytpw.org</a>
<b>Supervisor John Francis</b> <a href="mailto:jfrancis@soleburytpw.org">jfrancis@soleburytpw.org</a>	<b>Supervisor Robert A. McEwan</b> <a href="mailto:rmcewan@soleburytpw.org">rmcewan@soleburytpw.org</a>
<b>Supervisor Kevin Morrissey</b> <a href="mailto:kmorrissey@soleburytpw.org">kmorrissey@soleburytpw.org</a>	

### Township Calendar

*Calendar information is subject to changes.  
Confirm all dates and times with the Township office.  
Meetings begin at 7 p.m. unless otherwise noted.*

#### July

7/25 Solebury Farm Committee  
7/26 202 Property Advisory Committee

#### August

8/7 6 p.m. Historical Architectural Review Board  
8/8 Environmental Advisory Council  
8/9 Zoning Hearing Board (as needed)  
8/14 Planning Commission  
8/15 6 p.m. Board of Supervisors  
8/17 6 p.m. Land Preservation Committee  
8/23 202 Property Advisory Committee

#### September

9/5 6 p.m. Board of Supervisors ~ Budget Session  
9/11 Planning Commission  
9/12 Environmental Advisory Commission  
9/13 Zoning Hearing Board (as needed)  
9/18 6 p.m. Historical Architectural Review Board  
9/19 6 p.m. Board of Supervisors  
9/21 Land Preservation Committee  
9/26 Solebury Farm Committee  
9/27 202 Property Advisory Committee  
9/28 Parks & Recreation Board

#### October

10/2 6 p.m. Historical Architectural Review Board  
10/3 6 p.m. Board of Supervisors ~ Budget Session  
10/5 6 p.m. Human Relations Commission  
10/9 Planning Commission  
10/10 Environmental Advisory Council  
10/11 Zoning Hearing Board (as needed)

*Stay on top of meeting times with email alerts!  
Visit: [SoleburyTwp.org](https://SoleburyTwp.org) and click "Email Notices."*