

# Solebury Messenger

A bimonthly publication of the Board of Supervisors

Vol. 18, No. 1

WINTER ISSUE

JANUARY 2012

## “Irene” and “Lee” Damage Solebury Infrastructure

*Township Borrows \$850,000 to Fund Necessary Repairs*

As most residents are aware, Hurricane Irene and Tropical Storm Lee brought a powerful combination of pounding rain, strong wind, and rushing floodwater to Solebury in the fall, lifting roadways, destabilizing bridge moorings, washing out stream banks, and literally sending bedrock tumbling down hillsides.

“After Irene, the ground was saturated and the earth was loose,” Township Manager Dennis Carney recalled. “Then Tropical Storm Lee hit, which brought a huge volume of water that just took everything away.”

Portions of Solebury infrastructure were significantly impaired. Many areas required immediate remediation, which was carried out as quickly as possible so that residents’ movements between work and school would not be hampered longer than necessary.

Many roads and bridges were closed while approximately 1,800 tons of stone were dispatched to shore up stream banks, fill swales, and shoulder washed out bridge footings; heavy equipment was brought in to stop transgressing streams from permanently changing course.

Township employees and consultants assessed damages and safety concerns—and conducted repairs—until one by one, most

roads and bridges were safely reopened.

However, a short list of four, more extensive restoration projects remains, with repairs planned for spring.

### **Help From FEMA/PEMA**

The Township may be eligible for reimbursement of some costs related to the damage by applying to the Federal (FEMA) and/or Pennsylvania (PEMA) Emergency Management Agencies; however, a condition of such reimbursement is that the Township proceed with repairs using its own resources, then apply for assistance when the work is finished.

Reimbursement will depend on, among other things, the availability of funds at the time of filing.

While Dennis noted that no one can guarantee the Township will receive this help, he also said, “From everything we’ve been told, we have reason to be hopeful,” whereas postponing the work makes the Township ineligible for the assistance.

To move forward with the overall infrastructure restoration—at a current estimated total cost of \$770,000—the Board of Supervisors approved a 0.5-mil increase in the Township’s 2012 budget.

The increase will be used to pay down a

*(continued on page 4)*

## Departments Hold Operating Budgets Flat

*0.5-Mil Property Tax Increase Funds Extensive Repairs to Infrastructure*

In recognition of the economic climate, Solebury departments have kept their operating budgets largely flat for 2012, allowing the Township to produce a 2012 budget that requires only a 0.5-mil increase to fund extensive repairs to infrastructure damaged by Hurricane Irene and Tropical Storm Lee (*see article at left*).

A 0.5-mil increase equates to \$33 for an average assessed Solebury property, and the Township will apply for possible reimbursement from the Federal (FEMA) and/or Pennsylvania (PEMA) Emergency Management Agencies when the infrastructure repairs have been completed and paid for—a requirement for receiving the financial assistance.

### **Police Dept.**

Police Chief Dominic Bellizzie’s budget continues to set some money aside each year in anticipation of the mandated transition to new police radios that facilitate communication throughout the county and state.

In addition, this budget supports a vehicle replacement schedule that allows for the purchase of two vehicles each year. The extended warranties purchased with each new vehicle typically expire when the vehicle is replaced.

*(continued on page 5)*

### **ELY ROAD**, near

River Road, collapsed during Tropical Storm Lee, but was restored by the Public Works Dept. A clogged drainage pipe caused stormwater to accumulate, flow onto the road, then course back toward the stream, severely eroding the soil under the roadbed and creating a large hole, into which the road collapsed.



## Inside This Issue ...



- ▶ Township Calendar .....2
- ▶ 2012 Lambertville-New Hope Winter Festival.....3
- ▶ eWaste Recycling .....4
- ▶ Solebury Recognized for Tobacco-Free Policy .....5
- ▶ Storm Damage Photos .....6
- ▶ Township Directory .....7
- ▶ Parks & Recreation Events .....7



Dear Taxpayer:

Through the **Solebury Messenger**, the Board of Supervisors gives you, the taxpayer, firsthand information about Township matters. In these pages, you will read about what is being done to preserve and improve the quality of life as you know it, as well as how your hard-earned tax dollars are being spent.

The **Solebury Messenger** is created by Kay Hayes and Marie Collins, of School Window Publications; the newsletter celebrated its 15-year anniversary with the publication of the Nov. 2010 issue.

This bimonthly periodical is primarily ad-sponsored—a method which allows the Township to provide taxpayers with six professional newsletters each year for a fraction of the actual cost. To place an advertisement supporting this periodical, contact Kay at 609-397-8483.

If you live in the Township, but are not currently receiving a copy of the **Solebury Messenger** through the mail, please contact Kay so that she can add your name and address to our mailing list.

Other correspondence should be directed to the appropriate Township official. For more information, see the Township directory on page 7.

*Kay and Marie*



Printed on recycled paper by Hermitage Press, Trenton, NJ  
© School Window Publications

#### A NOTE TO OUR ADVERTISERS

*Publication of advertisements in the Solebury Messenger does not represent endorsement by the Township or its officers of any products, services, businesses, or ideas mentioned. Also, no political advertisements will be accepted.*



## Township Calendar



*Calendar information is subject to last-minute changes.  
Confirm all dates and times with the Township office.  
All meetings are held at Solebury Township Hall.*

### January

- 1/3 Board of Supervisors, Reorganization Meeting, 7 pm
- 1/5 Historical Architectural Review Board, 7 pm
- 1/9 Planning Commission, 7 pm
- 1/10 Environmental Advisory Council, 7:30 pm
- 1/17 Board of Supervisors, 7 pm
- 1/26 Parks & Recreation Board, 7 pm
- 1/26 Land Preservation Committee, 7 pm

### February

- 2/6 Historical Architectural Review Board, 7 pm
- 2/7 Board of Supervisors, Budget Work Session, 7 pm
- 2/13 Planning Commission, 7 pm
- 2/14 Environmental Advisory Council, 7:30 pm
- 2/20 HOLIDAY—TOWNSHIP OFFICES CLOSED
- 2/21 Board of Supervisors, 7 pm
- 2/23 Parks & Recreation Board, 7 pm

*Stay on top of meeting times with email alerts!*

Visit: [soleburytwp.org](http://soleburytwp.org)

Click the News tab, click "Email Alerts,"  
and enter your email address.



## New Hope Physical Therapy & Sports Rehab

### Conditions and Injuries Treated

- Shoulder, arm, wrist, hand pain
- Arthritis, bursitis, tendonitis
- Complete fracture and sprain care
- Total joint reconstruction rehab
- Leg, hip, knee, ankle, foot pain
- Post-surgical rehabilitation
- Carpal tunnel syndrome
- Sports and work injuries
- Spine, back, neck pain

## 215-862-4195

[NewHopePT.com](http://NewHopePT.com)

*All Insurances Accepted  
Comprehensive Pain Relief for a Better Life*



Joyce, Kathy, Janet, Bill, Natalie and Ann

Copper • Slate • Wood Shingles • Metal Roofing

# Solebury Roofing Contractors, Inc.

- Locally owned and operated
- All work installed by owner
- All work 100% guaranteed
- Fully insured and bonded
- Roofing professionally installed since 1970

## 215-534-0284

## Soleburyroofing.com

2302 Street Road Lahaska, PA  
Office and Fax 215-794-7634



**David Uosikkinen's IN THE POCKET:  
ESSENTIAL SONGS OF PHILADELPHIA  
Comes to Winter Festival 2012**

**On the Web: [winterfestival.net](http://winterfestival.net)**

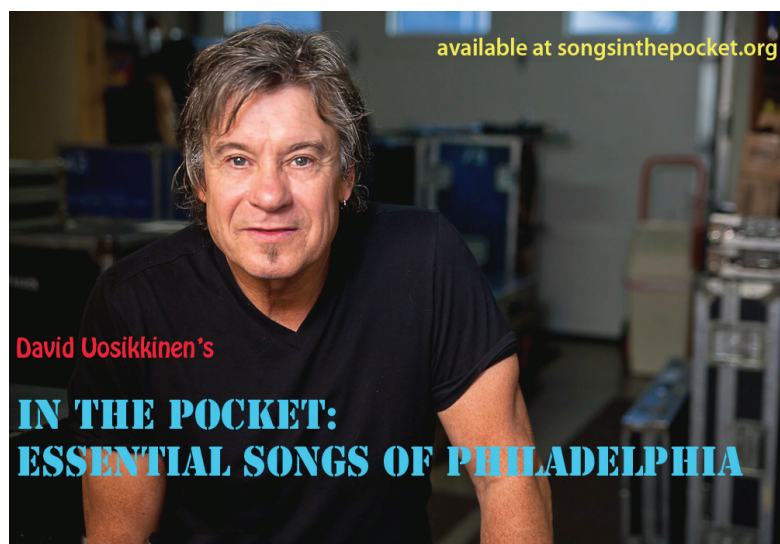
The Jan. 27 Winter Festival Concert features David Uosikkinen with members of The Hooters, Soul Survivors, and an all-star line-up of Philly's finest performing an array of songs written, recorded, and made famous *in* Philadelphia or *by* Philadelphia musicians.

Uosikkinen's band, In the Pocket, is composed of musicians from a variety of different musical groups, which are listed on the Winter Festival website.

Local singer-songwriter John Danaher and his acoustic band, The Quietmen, open the show.

The Friday concert will be held in the Steven J. Buck Theater on 180 West Bridge Street in New Hope at 8 PM.

VIP ticket holders can meet band members and emcee Pierre Robert of WMMR at a pre-concert reception at the Logan Inn from 6-7:30 PM. The VIP package also includes priority seating at the concert and trolley service between the theater and Logan Inn before and after the concert.



**HEADLINER** David Uosikkinen's IN THE POCKET takes the stage as part of the 2012 Winter Festival Concert Friday, Jan. 27, at the Stephen J. Buck Theater in New Hope. To purchase tickets and view a full schedule of Winter Festival events and free family activities, visit: [winterfestival.net](http://winterfestival.net)

**2012 Lambertville ❄️ New Hope Winter Festival — January 14 to 29**



**16<sup>th</sup> ANNUAL CHILI COOK-OFF**  
Presented by River Horse Brewery

*Sunday, January 29, 1-4 PM*  
*Memorable Affairs—Occasions*  
*560 Union Square, New Hope, PA*

Come in from the cold to enjoy chili prepared by outstanding area restaurants:

- Lambertville Station
- Triumph Brewing
- DISH Catering
- John & Peter's
- El Taco Loco
- Fran's Pub
- Havana
- Logan Inn
- Occasions
- Sandbar
- Bitter Bob's
- Stockton Inn
- The Landing Restaurant

\$45 Adults / \$35 Under 21 or No Alcohol  
(includes commemorative pint glass)



**WINTER FESTIVAL CONCERT**

*Friday, January 27, 8 PM*  
*Steven J. Buck Theater*  
*New Hope-Solebury High School*

Presented by  
The First National Bank  
and Trust Company of Newtown  
TICKETS: \$35 / \$75 (VIP)  
Tickets and concert details at:  
[www.winterfestival.net](http://www.winterfestival.net)

**MAYOR LARRY KELLER ROAST & TOAST**

Presented by New Hope Parks & Recreation  
*Saturday, January 28, 6:30-10:30 PM*  
*Memorable Affairs—Occasions*

Enjoy a fabulous sit-down dinner, cocktails, laughs, and memories at this fun "roast & toast" of the mayor's many achievements!  
TICKETS \$75 FREE PARKING

**FIRE AND ICE BALL**

*New Hope Arts Center, Jan. 14, 8-11 PM*  
New Hope Chamber of Commerce—\$15

**TASTE OF WINTER FEST**

*Inn at Lambertville Station, Jan. 26, 7-9 PM*  
A savory evening of fine food and beverages from great local restaurants.  
\$40 Adults / \$30 Under 21 or No Alcohol

**MUSIC & THEATER PERFORMANCES**

*St. John's School, Jan. 28, 10 AM-3 PM*  
FREE! (Plus PTSO Café in basement)

**ROTARY BEEF 'N BREW**

*Triumph Brewing Co., Jan. 29, 2-4:30 PM*  
\$40 Adults / \$30 Under 21 or No Alcohol

**PANCAKE BREAKFAST – All You Can Eat!**

*New Hope-Solebury High School cafeteria,*  
*Sunday, Jan. 29, 8-11:30 AM*  
NH-S Girls Soccer Team  
\$6.50 Adults / \$3.50 Children

**CHILDRENS ACTIVITY CENTER**

*Sunday, Jan. 29, 9-11 AM in NHS HS Gym*  
Solebury Parks & Recreation—FREE!

**THE PIDCOCK AGENCY**



**INSURANCE**

315 West Bridge St. • P.O. Box 9  
New Hope, PA 18938-0009  
**(215) 862-2001**

*Serving the  
community  
since 1931*

*Independent insurance agents representing*

**HARLEYSVILLE • WESTFIELD TRAVELERS  
OHIO CASUALTY • GMAC  
FLOOD • MOTORCYCLE • SPECIALTIES  
Access to CHUBB and FIREMANS FUND**

*Call Frank Cosner Jr. or Patty Cosner*

**[slatterycompany.com](http://slatterycompany.com)**

**LANDSCAPE CONTRACTORS**

**Landscape Masonry & Fine Gardens**

**SLATTERY & COMPANY**

**215 630 1752**

*Solebury Resident*

## New Year Brings Pa. eWaste Recycling

*Wondering What to Do With Storm-Damaged Electronics Now?*

Autumn storms throughout Pennsylvania left many people with damaged electronic items—such as computers, printers, TVs, and other items—that cannot be disposed of with household trash, but must be recycled through an electronic recycling station or event.

### **What You Can Do Now**

Typically, the *Solebury Messenger* announces the collection dates of the Bucks County Planning Commission's Household Hazardous Waste Collection Program in March or May, when the information becomes available; the first collection date is usually in May.

Additionally, the EPA website provides links to local collection programs, manufacturers' collection programs, and charitable-donation programs.

And the DEP website provides information and links to electronics recyclers and electronics recycling collection programs.

### **Coming Soon!**

In 2010, Pennsylvania adopted the e-waste law (the Covered Device Recycling Act), requiring manufacturers to recycle many of the electronic devices they produce, including computer monitors, desktop and laptop computers, computer peripherals, and TVs.

Beginning January 2012, retailers who sell these products must also offer some way for consumers to recycle them—such as by providing information about local programs or offering their own collection-and-disposal programs.

Manufacturers and retailers must offer these services free of charge or offer the consumer a financial incentive to participate, such as a coupon or rebate.

As of January 2013, it will be illegal to dispose of any electronic waste in landfills in Pennsylvania; the equipment will be refused by trash haulers. ♻️

### **Visit these websites to learn more:**

[www.buckscounty.org](http://www.buckscounty.org) (Click Recycle in Bucks in the "How Do I ..." menu)

[www.epa.gov/wastes/conservation/materials/recycling/donate.htm#local](http://www.epa.gov/wastes/conservation/materials/recycling/donate.htm#local)

[www.portal.state.pa.us/portal/server.pt/community/household/14079](http://www.portal.state.pa.us/portal/server.pt/community/household/14079)

[www.portal.state.pa.us/portal/server.pt/community/electronics\\_recycling\\_management\\_program/20342](http://www.portal.state.pa.us/portal/server.pt/community/electronics_recycling_management_program/20342)



Visit our website to share your suggestions with the Township.

## **"Irene" and "Lee" (cont. from page 1)**

10-year \$850,000 loan the Township will take to pay for the repairs, with the slightly larger than estimated amount expected to provide flexibility in case bids come in higher than foreseeable.

### **Bridge on Covered Bridge Road**

A stone arch bridge on Covered Bridge Road between Aquetong and Pidcock Creek Roads must be replaced at a cost of approximately \$350,000 (see photos on page 6).

According to Dennis, the volume of rain that poured down in the area in a short span of time "turned a normally babbling brook into a torrent."

Rushing water eddied at the base of the bridge, creating small whirlpools that literally drilled the soil right out from under the footings; the destabilized streambed, in combination with rapidly moving water, then displaced stones from the bridge wall, causing a partial collapse that undermined the entire structure.

### **Aquetong Road Drainage Pipe**

A roughly 500-foot length of a 30-inch drainage pipe that, under normal conditions, carries stormwater from properties on Aquetong Road between Mechanicsville and Saw Mill Roads, must be replaced at a cost of about \$70,000.

Typically, stormwater flows into the pipe through grates, but rushing water eroded the roadbed at these entry points, opening a steadily deepening sink hole, into which the pipe later collapsed, sustaining irreparable damage.

To prevent further damage, the pipe has been patched and the six-foot sinkhole temporarily filled with rocks and soil.

### **Township-Wide Bridge Repairs**

Solebury's 27 small bridges must be assessed by the Township engineer, then extensive repairs

(continued on next page)

## Trinity Day School

6587 Upper York Rd., Solebury, Pa.

215-297-5510



cbove@trinitysolebury.org

www.trinitysolebury.org/tds

### **JOIN US AT OUR OPEN HOUSE**

**JANUARY 26 & 27**

**9-11 AM**

Pre-K for 4's and young 5's

Pre-School Classes for 3's

Toddler-Grow for 2½ year olds

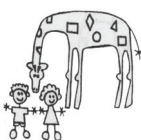
- Dedicated to the social & emotional development of the young child

- Small class sizes & gentle atmosphere for learning

- Long-standing, experienced staff

- Faith-based principles support a home-like environment

- Extended full-day program available



This could be your ad.



Call 609-397-8483.

## HONEST, ETHICAL, LOW-COST MORTGAGE SOLUTIONS



**CFS EQUITY SERVICES, INC.**  
PA Licensed Mortgage Brokers  
PROVIDING MORTGAGE SOLUTIONS

[www.cfsequitymortgage.com](http://www.cfsequitymortgage.com)

**William A. Frey, Jr.**

President

Office: 215-297-9745

Cell: 267-337-0488

Fax: 215-297-8866

Email: [wfrey10@comcast.net](mailto:wfrey10@comcast.net)

7 Sugan Close St., New Hope, PA 18938

*Please call me for mortgage solutions.*

**William Frey**

◆ Solebury Resident

Since 1977

◆ Member, Pa. Assn. of Mortgage Brokers

◆ NMLS #103405





## "Irene" and "Lee"

(continued from page 4)

must be carried out to ensure their safety, at a cost of roughly \$200,000.

Here, on a smaller scale, rushing and eddying streams displaced soil and rocks from many bridge footings, leaving behind holes—a phenomenon known as "scouring."

In these cases, repairs involve shoring up the bridge footings with a combination of concrete and two-foot boulders. In other cases, parapet walls require repointing or rebuilding.

### Armitage Road and Hillside

A short stretch of Armitage Road overlooking the Cuttalousa Valley must be reconstructed, and the hillside that leads to the valley from the road must be re-stabilized, at a cost of about \$150,000 (see photo on page 6).

Pounding rains and strong winds undermined the blacktop at the edge of this already narrow strip of roadway, dislodging the guardrail and sending bedrock from the hillside tumbling into the valley.

Before the roadwork can be completed, loose bedrock must be excavated from the hillside, and the hill must be stabilized, which involves pouring a concrete retaining wall under the roadbed. Then the road can be reconstructed and resurfaced and the guardrail replaced. 🌱

### Planning an Addition or Renovation?



Be smart: Talk to the Township first.

We can help you navigate the Township's forms, approval process, codes, and zoning regulations.

Getting it right the first time could save you time and money.

## Solebury Recognized for Tobacco-Free Policy

In November, the Pennsylvania Dept. of Health awarded Solebury a certificate of appreciation for its "tobacco-free" policy, which has prohibited smoking and the use of tobacco products in Township parks since 1997.

The award is part of the Young Lungs At Play program of Pa. Clean Air Council, and was accepted by Parks and Recreation Director Dudley Rice during a ceremony in Reading at the Health Promotion Council's annual meeting.

Solebury was an early leader in the initiative for "tobacco-free" parks.

The Township reaffirmed those rules in 2007 and, most recently, in 2011 when it joined the Young Lungs At Play program.

Signs provide reminders for everyone to set a good example for young children and protect the environment by not smoking or using tobacco products in Township parks.

Park goers have been very cooperative. 🌱

## Budgets (continued from page 1)

Chief Bellizzie's department keeps costs down by borrowing scales for weighing trucks from another municipality, rather than purchase them; also, he uses part-time patrol officers to cover shifts, because they are paid at a lower hourly rate and are not eligible for benefits.

### Parks & Recreation Dept.

In spite of the economy, 2011 was the Parks and Recreation Dept.'s most financially successful year to date, according to Director Dudley Rice, due in large part to community volunteer efforts and local partnerships.

Key partners include NH-S School District, which provided facilities for 2011 Summer Adventure Camp; the Lambertville-New Hope Winter Festival, which supports many local organizations; and local sports organizations.

Camp and Winter Festival funds allow the department to provide free programs, like AED/CPR certification and Halloween Safety Awareness, while local sports organizations are a source of volunteers and raise money to support their teams and park facilities—all of which are vital to the health of the Township athletic program.

Between 1,300 and 1,500 Solebury children participate in Parks and Recreation activities each year. Adults participate in basketball and softball programs, and the department underwrites a senior-citizen driving course offered through the Community School.

The proposed 2012 Parks and Recreation budget is less than 1% of the Township budget.

### Public Works Dept.

Public Works Director Dennis Carney—also

the Township Manager—relayed the need for an increase in snow removal funding for 2012 based on last year, including \$10,000 for additional salt and \$10,000 for more subcontracted snow movers.

The department will purchase a \$6,000 pressure washer in 2012, which Solebury employees will use to maintain Township equipment so it lasts longer and stays in better shape.

An approximate \$150,000 surplus in the Road and Bridges Fund—left over after the replacement of the Sagan Road bridge—will be redirected toward necessary road maintenance in 2012.

### Administration Dept.

Dennis noted that Solebury will fund no groundwater, stormwater, or watershed studies in 2012; however, \$15,000 will be allotted to complete the state-mandated revision of the Township's Act 537 Sewage Management Plan.

Engineering of the Ingham Lake dam repair and/or replacement project is expected to slowly move forward in 2012.

While the Township will maintain its contribution to the Lambertville-New Hope Ambulance and Rescue Squad (\$17,500) and Central Bucks Ambulance and Rescue Unit (\$3,000) at 2011 levels next year, contributions to the Bucks County Audubon Society, Friends of the Delaware Canal, and Bowman's Hill Wildflower Preserve will be eliminated, and contributions to the Bucks County SPCA (\$1,250), Central Bucks Senior Citizens (\$500), New Hope Senior Citizens (\$500), and Phillips Mill Community Association (\$375) will be half of 2011 amounts. 🌱



Auto • Home • Business • Life

**Call us for a quote today.**

**Washington Crossing Insurance Group LLC**

1075 River Road, Ste 3

Washington Crossing PA 18977

**215-321-4990**

[www.crossinginsurance.com](http://www.crossinginsurance.com)

[howard@crossinginsurance.com](mailto:howard@crossinginsurance.com)

S882 Not all companies are licensed or operate in all states. Not all products are offered in all states. Go to [erieinsurance.com](http://erieinsurance.com) for company licensure and territory information.



## Let's face it,

who has time for house cleaning?



# Bucks County's GREEN

## home cleaning experts

We can help! Call today 215.230.7700 and trust your home to the BEST.

FREE In-Home Quote  
Smiles Guaranteed  
Call today!



**Harmony Clean™**  
Healthy home cleaning, naturally

**215.230.7700**  
[www.HarmonyClean.com](http://www.HarmonyClean.com)





#### RECENT STORM DAMAGE

**THE STONE ARCH BRIDGE** on Covered Bridge Road between Aquetong and Pidcock Creek Roads (*top two photos*) is closed until it can be replaced in the spring. As the top-left photo shows, the stream now flows underneath the bridge's right wall. The photo at right highlights the bridge wall that collapsed from the combined forces of a destabilized streambed and relentlessly rushing water.

**ARMITAGE ROAD** (*left*), which overlooks the Cuttallossa Valley, is also closed until extensive repairs can be made in the spring. The photo shows where entire chunks of roadbed were ripped away during the autumn storms; in addition, about a third of the road surface is eroded where the road edge meets the hillside. The destabilized guardrail in the foreground leans toward the valley in loose bedrock; it sits in a crevice that was created when high winds and pounding rain tore away portions of the hillside and sent them tumbling toward Cuttallossa Creek.

Solebury  United Methodist  
CHILDREN'S LEARNING CENTER



## Openings Still Available Pre-Kindergarten Classes

A Christian-Based Pre-School Offering

**Pre-Kindergarten**  
for Children 3 to 4 years of Age

**Pre-Kindergarten Plus Program**  
for 5 year olds not ready for  
full-day Kindergarten

**Early 3's Program**

**Afternoon Enrichment  
Program Available**

2536A Aquetong Road, New Hope, PA 18938  
215.862.2917 • [www.soleburyumc.org](http://www.soleburyumc.org)

## King's INDIAN HEAD FARM



Since 1979  
Residential &  
Commercial

### Landscape Design, Installation and Maintenance Services

Lawn and Bed Maintenance  
Mowing • Mulching • Pruning  
Spring Clean-Up  
Hardscaping • Drainage

**CALL NOW FOR A FREE ESTIMATE**

**Walks, Walls, Patios & Driveways**



[www.kingsindianheadfarm.com](http://www.kingsindianheadfarm.com)

**215-968-5868**

Newtown, PA 18940

HOPEWELL • LAMBERTVILLE EYE ASSOCIATES  
*See Life*  *Get a clear perspective* NJ 4813

**Treatment and Management of  
Eye Diseases & Disorders**

[www.seelife.net](http://www.seelife.net)

**Lambertville • 609-397-7020**

Rt. 29 & 179 at Bridge St., Lambertville, NJ 08530

**Hopewell • 609-466-0055**

84 East Broad St., Hopewell, NJ 08525

### K. DANIELS, OD FAAO AND ASSOCIATES

Academic Faculty at the Penn. College of Optometry

Book Author:

Contact Lens, Refractive Surgery, Dry Eye & Presbyopia

Difficult Contact Lens Fittings

Laser Vision Co-Management

Dry Eye Treatment

Children's Vision

Corneal Reshaping

Surgical Staff Affiliated with Wills Eye Group in Princeton

Majority of Vision Plans and Medical Insurances Accepted

Our offices are also providers for many of the same vision plans  
offered at the majority of retail eye centers.





# Township Directory

P.O. Box 139, Solebury, PA 18963

[soleburytwp.org](http://soleburytwp.org)

In an emergency, please dial: 9-1-1.  
For other matters, call: 215-297-5656

The following individuals can be reached by email:

**Township Manager Dennis H. Carney:**

[soleburymanager@soleburytwp.org](mailto:soleburymanager@soleburytwp.org)

**Asst. Township Manager/Secretary/Treasurer/Zoning Officer**

**Gretchen Rice:** [grice@soleburytwp.org](mailto:grice@soleburytwp.org)

**HARB Administrator/Secretary, Dept. of Planning and Preservation Christine Terranova:** [cterranova@soleburytwp.org](mailto:cterranova@soleburytwp.org)

**Land Preservation Administrator Jean Weiss:**

[jweiss@soleburytwp.org](mailto:jweiss@soleburytwp.org)

**Parks & Recreation Director Dudley Rice:**

[soleburyparks@soleburytwp.org](mailto:soleburyparks@soleburytwp.org)

**Right-To-Know Officer, Administrative Records**

Asst. Twp. Manager Gretchen K. Rice

[soleburymanager@soleburytwp.org](mailto:soleburymanager@soleburytwp.org)

**Right-To-Know Officer, Police Records**

Police Chief Dominick Bellizzie

[police@soleburypd.org](mailto:police@soleburypd.org)

Unsure where to direct your question?

Email: [soleburytownship@soleburytwp.org](mailto:soleburytownship@soleburytwp.org)

You can direct your query to a specific individual  
or write a general query.

The appropriate individual will respond.



# Parks and Recreation Dept.

## Upcoming Events

To learn more about the Township's parks and recreation programs, visit the Solebury website ([soleburytwp.org](http://soleburytwp.org)) and click on the Parks and Recreation link.



Baseball and softball online registration has started. Go to the baseball website, below, and click this link:

 **SIGN UP NOW**

To keep abreast of local sports news, visit these websites:

[www.soleburytwp.org](http://www.soleburytwp.org) (Parks & Recreation tab)

[www.soleburybaseball.org](http://www.soleburybaseball.org) (baseball)

[www.soleburybasketball.org](http://www.soleburybasketball.org) (basketball)

[www.tcteams.com/nhspopwarner](http://www.tcteams.com/nhspopwarner) (football)

[www.tcteams.com/solebury](http://www.tcteams.com/solebury) (soccer)

[www.soleburywrestling.com](http://www.soleburywrestling.com) (wrestling)

## Join the Best Health & Fitness Club for \$0 enrollment! (Thru 2/6/12)

Make your fitness resolution a reality by entering our free Biggest Mover contest - starting February 6th!



The **CORNERSTONE** Clubs

Doylestown | New Hope | Warrington | The Spa  
Visit us 24/7 at [www.CornerstoneClubs.com](http://www.CornerstoneClubs.com)



Voted best health & fitness club, best Pilates studio!  
One of the best yoga studios and swim lessons!

FREE Consultation When You Mention This Ad

## PROBATE:

### Let Me Help You Through the Process

Attorney Yvette E. Taylor-Hachoose is an experienced probate lawyer who can help you avoid problems that may arise after someone has died. She can also guide you through:

**Wills & Living Wills**

**Trusts**

**Estate Planning & Elder Law**

**Business Succession Planning**



**Law Offices of  
Taylor-Hachoose**

Washington Crossing, PA

**215-321-4033**

[www.ythlaw.com](http://www.ythlaw.com)

Yvette E. Taylor-Hachoose is the author of **Stop! What Are You Waiting For? Your Step-by-Step Guide to Estate Planning**. She is a graduate of Georgetown University Law Center. She has served as Vice President with Prudential Insurance Company and Assistant General Counsel with both CIGNA Corporation and Prudential.



**Solebury  
Messenger**

P.O. Box 596, Lambertville, NJ 08530

PRSR STD  
ECRWSS  
U.S. Postage PAID  
Flemington, NJ  
08822  
Permit No. 86

**Township  
News Inside!**

**CARRIER ROUTE PRESORT  
POSTAL CUSTOMER**

*Happy New Year*



*from Solebury Township*

<b>THC</b>	<b>THOMAS H. CREWS, INC.</b> PROFESSIONAL LAND SURVEYOR
PA & NJ	www.CrewsSurveying.com
Property Surveys • Site Plans • Subdivisions Stormwater • Land Development • Grading	
<b>Thomas H. Crews, PLS</b> THC_ThomasHCrews@comcast.net	
215-766-2477	Fax 215-766-2399

<b>CONCERTS</b> in Sergeantsville, NJ	<b>89.7 FM</b> wdvr
<b>February 18</b> - World Music: Tres Compadres - modern Flamenco Dallas Vietty's Musette Project	
<b>March 3</b> - Big Irish Show & supper with Ed Saultz and friends	
609-397-5991	www.wdvrfm.org

<b>SOLEBURY CHIROPRACTIC</b>
<b>DR. MICHAEL J. PREDIGER</b>
2996 SUGAN ROAD • BOX 85 SOLEBURY, PENNSYLVANIA 215 297 8444
<b>HANDS ON HEALTH CARE FOR THE ENTIRE FAMILY</b>


<b>LAURIE SCHRAY, MD</b> BOARD CERTIFIED PSYCHIATRIST
Specializing in • <b>AFFECTIVE DISORDERS</b> • <b>ADDICTIONS</b> • <b>LIFE TRANSITIONS</b>
Now Accepting New Patients <b>ADULT • ADOLESCENT FAMILY • COUPLES</b> Fee For Service Only
9 Market Place, Logan Square New Hope, PA 18938 <b>215-375-5550</b> nhpsychmd@aol.com

The next issue of the <b>Solebury Messenger</b> will mail on March 7.	
	
Deadline for advertisements is February 9.	
<b>*COUPON*</b> <b>15% OFF PACK AND SHIP</b> <b>100% GUARANTEE</b>	 <b>The UPS Store®</b> Logan Square New Hope <b>215-862-3600</b>
<b>Offer expires July 4th!</b>	

<b>Personal Trainer Mike Ballas</b>
<b>In-Home Personal Fitness Training</b>
Customized fitness program to exceed your personal health and fitness goals! All fitness levels encouraged and welcomed!
<ul style="list-style-type: none"> <li>✓ Weight Loss</li> <li>✓ Body Sculpting</li> <li>✓ Muscle Toning</li> <li>✓ Nutritional Counseling</li> <li>✓ <b>MOTIVATION!!!</b></li> </ul>

18 years of Fitness Training
<b>215-595-8685</b> <b>BucksTraining@aol.com</b>