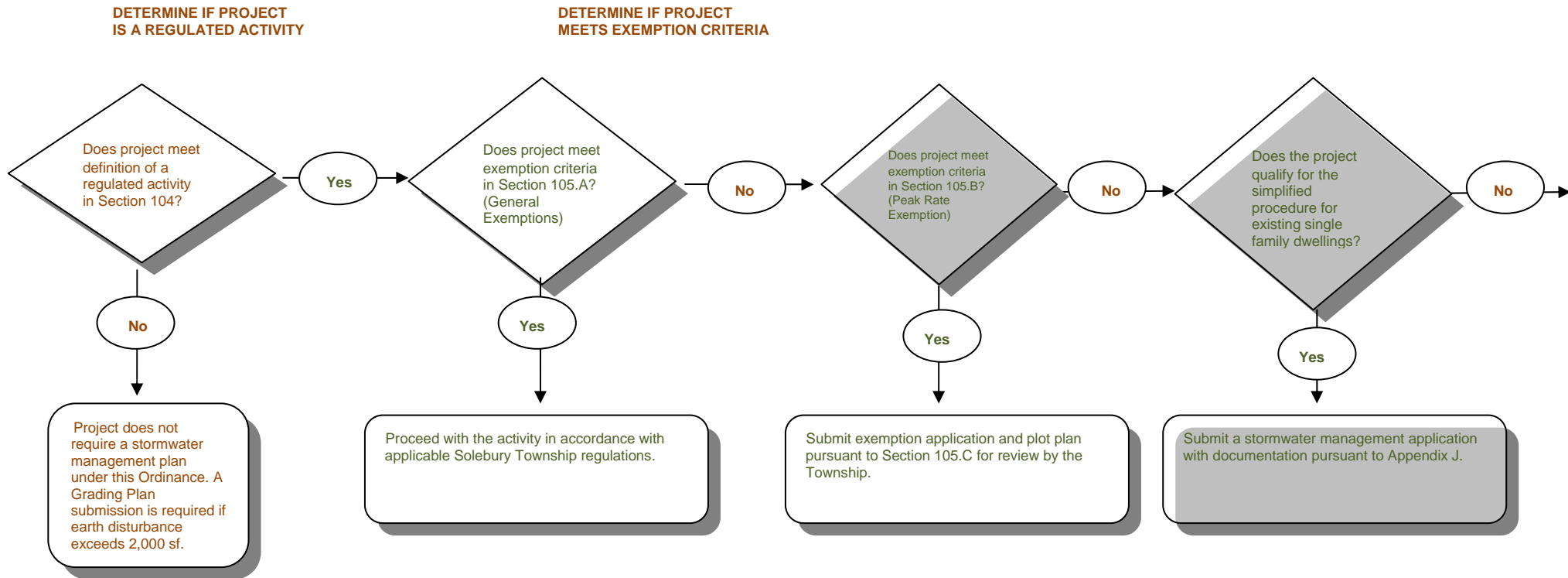
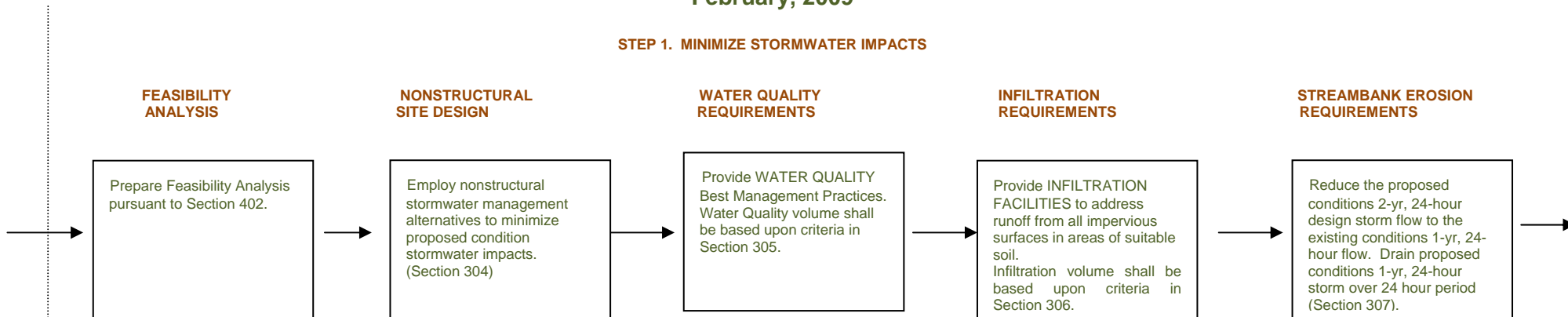


STORMWATER MANAGEMENT
Water Quality and Quantity Control Stormwater Management Plan Preparation Procedure
Applicant Flow Chart
SOLEBURY TOWNSHIP
February, 2009



STORMWATER MANAGEMENT
Water Quality and Quantity Control Stormwater Management Plan Preparation Procedure
Applicant Flow Chart
SOLEBURY TOWNSHIP
February, 2009

STEP 1. MINIMIZE STORMWATER IMPACTS



STORMWATER MANAGEMENT
Water Quality and Quantity Control Stormwater Management Plan Preparation Procedure
Applicant Flow Chart
SOLEBURY TOWNSHIP
February, 2009

STEP 1. MINIMIZE STORMWATER IMPACTS

MANAGEMENT DISTRICT REQUIREMENTS

Determine the Management District within which the site is located (Ordinance Section 302 and Appendix F). Conduct existing conditions runoff analysis using methodology established in Section 309.

Prepare final non-structural design. Conduct proposed conditions runoff analysis using methodology established in Section 309.

STEP 2. EMPLOY STRUCTURAL CONTROLS

Does proposed condition peak discharge for all design storms meet control criteria for stormwater management districts as specified in Section 302 and Appendix F?

No

Implement structural controls to meet peak discharge requirements for stormwater management districts as specified in Ordinance Section 302 and Appendix F.

STEP 3. PLAN SUBMISSION

Prepare and submit Stormwater Management Plan and, when applicable, Preliminary and/or Final Plan as specified in the Subdivision and Land Development Ordinance.

Yes

STOP - Applicant may proceed to Step 3. Plan Submission.

